

Name Index Number /

232/2
PHYSICS
Paper 2
(Theory)
Oct./Nov. 2012
2 hours

Candidate's Signature

Date.....



THE KENYA NATIONAL EXAMINATIONS COUNCIL

Kenya Certificate of Secondary Education

PHYSICS

Paper 2

(Theory)

2 hours

232/2 – Physics Paper 2

Monday 11.45 am – 1.45 pm
12/11/2012 (2nd Session)

Instructions to candidates

- (a) Write your name and index number in the spaces provided above.
- (b) Sign and write the date of examination in the spaces provided above.
- (c) This paper consists of **TWO** sections; **A** and **B**.
- (d) Answer **ALL** the questions in sections **A** and **B** in the spaces provided.
- (e) All working **MUST** be clearly shown.
- (f) Non-programmable silent electronic calculators and KNEC mathematical tables may be used.
- (g) This paper consists of **16** printed pages.
- (h) Candidates should check the question paper to ascertain that all the pages are printed as indicated and that no questions are missing.

For Examiner's Use Only

Section	Questions	Maximum Score	Candidate's Score
A	1–13	25	
	14	12	
B	15	11	
	16	12	
	17	10	
	18	10	
Total Score		80	

© 2012 THE KENYA NATIONAL EXAMINATIONS COUNCIL

Kenya Certificate of Secondary Education, 2012

PHYSICS

Paper 2

THEORY

220020007



912029

Turn over

SECTION A (25 marks)

Answer **ALL** the questions in this section in the spaces provided.

- 1 **Figure 1**, shows a plane mirror XY placed equidistant from two parallel lines AB and PT.

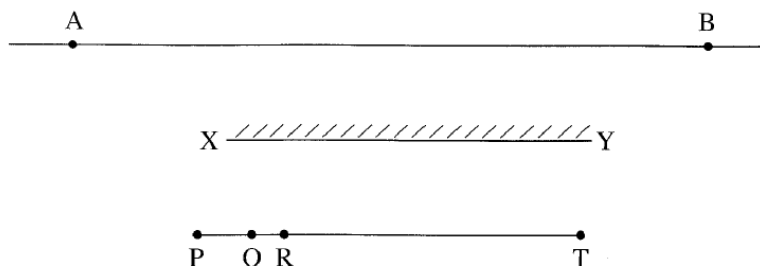


Figure 1

Four students stand at P, Q, R and T in front of the mirror

- (a) Indicate the positions of the images of students at Q, R and T on line AB. (1 mark)
- (b) State which of the three images are visible to the student standing at P. (1 mark)
-
- (c) Using rays indicate on the figure, how (b) above is possible. (1 mark)
- 2 **Figure 2**, shows two mirrors PQ and QR inclined at an angle of 110° . A ray of light is incident on mirror PQ at an angle of 60° .

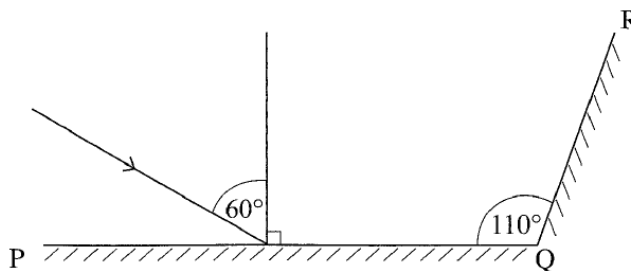


Figure 2

Complete the diagram to determine the angle of reflection of the ray in the mirror QR. (3 marks)

© 2012 THE KENYA NATIONAL EXAMINATIONS COUNCIL
 Kenya Certificate of Secondary Education, 2012
 PHYSICS
 Paper 2
 THEORY

912029

220020007

- 3 **Figure 3**, shows four identical light bulbs connected to a 15 volt battery whose internal resistance is negligible.

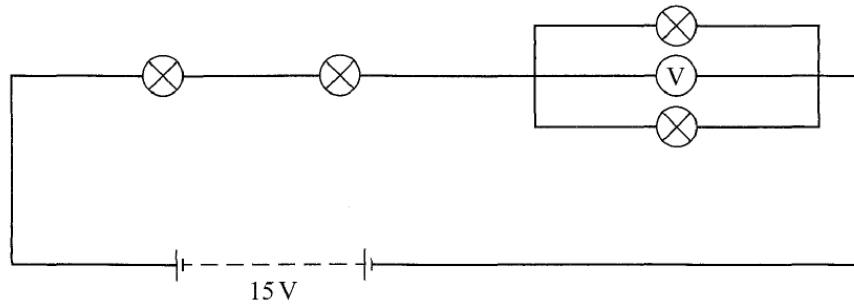


Figure 3

Determine the reading of the voltmeter V.

(2 marks)

.....

.....

.....

- 4 **Figure 4**, shows a negative point charge placed near a positively charged rod.

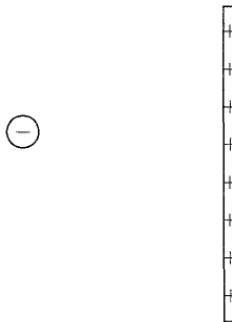


Figure 4

Draw on the diagram, the resulting electric field pattern.

(2 marks)

© 2012 THE KENYA NATIONAL EXAMINATIONS COUNCIL
 Kenya Certificate of Secondary Education, 2012
 PHYSICS
 Paper 2
 THEORY

912029

220020007

Turn over

- 5 **Figure 5**, shows an object O at the bottom of a beaker full of a liquid. An observer above the beaker sees its image at point X inside the liquid.

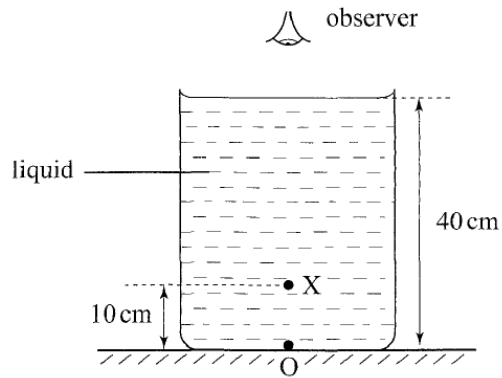


Figure 5

Determine the refractive index of the liquid. (3 marks)

.....

.....

.....

- 6 **Figure 6**, shows a narrow beam of radiation from a radioactive source, incident to a postcard. The emergent radiation passes through a magnetic field which is perpendicular to the plane of the paper, and into the paper.

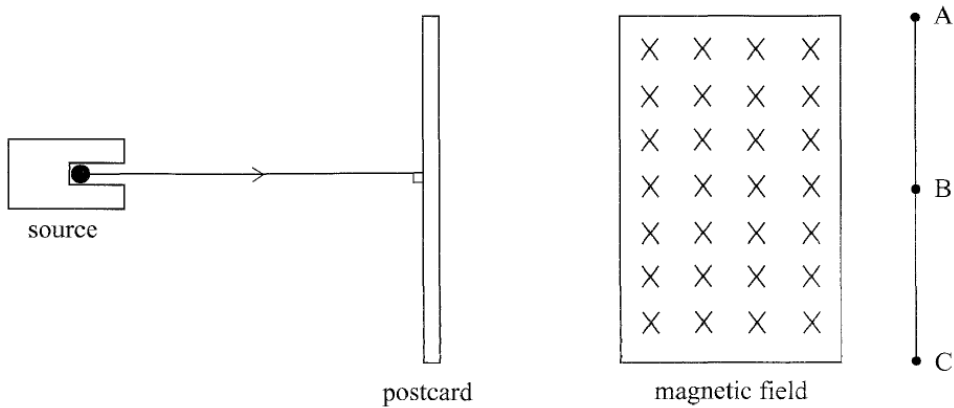


Figure 6

© 2012 THE KENYA NATIONAL EXAMINATIONS COUNCIL
 Kenya Certificate of Secondary Education, 2012
 PHYSICS
 Paper 2
 THEORY

912029

330020007

A detector moved along line AC detects radiations only at points B and C. State the two types of radiations detected. (1 mark)

.....

7 **Figure 7**, shows two similar coils P and Q around the end L and M of a piece of soft iron. A steady current passes through the coils.

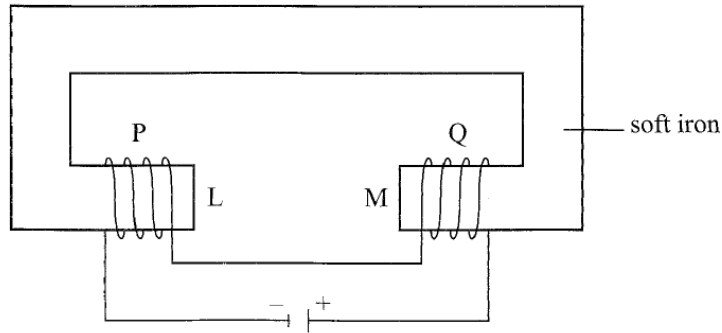


Figure 7

State the polarity of the resulting magnet at end L. (1 mark)

.....

8 Light from a lamp falls on the cap of a negatively charged electroscope. It is observed that the divergence of the leaf decreases. Explain the observation. (2 marks)

.....

- 9 **Figure 8**, shows an object O placed in front of a diverging lens whose principal focus is F.

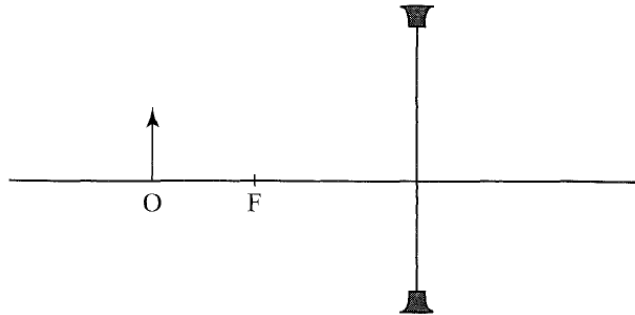


Figure 8

On the figure, draw a ray diagram to locate the image formed. (3 marks)

- 10 **Figure 9**, shows the cross-section of an optical fibre made of two types of glass, A and B. The refractive index of B is lower than that of A.

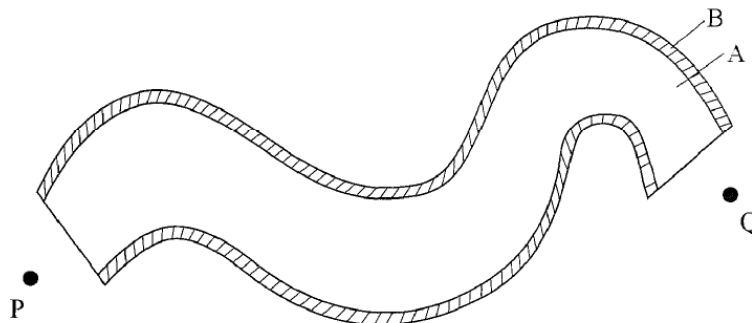


Figure 9

A ray of light enters the optical fibre at P and emerges from Q.

- (i) Sketch the path of the ray through the fibre. (1 mark)
- (ii) State the reason why light travels through the fibre as in (i) above. (1 mark)

.....

.....

.....

- 11 **Figure 10**, shows the cross section of a conductor held between two magnets and carrying a current out of the paper.



Figure 10

Indicate with an arrow on the diagram the direction in which the conductor will move when it is released. (1 mark)

- 12 State why alternating current (a.c.) is used for transmitting electricity over long distances. (1 mark)

.....

.....

- 13 **Figure 11**, shows an alternating current (a.c.) connected across a diode D and a resistor R.

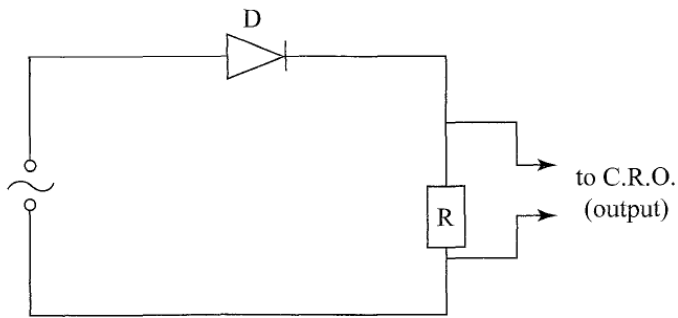


Figure 11

On the axes provided sketch the output as observed in the C.R.O. connected across R. (1 mark)



SECTION B (55 marks)

Answer *ALL* the questions in this section in the spaces provided.

- 14 (a) Figure 12, shows a displacement – time graph for a progressive wave.

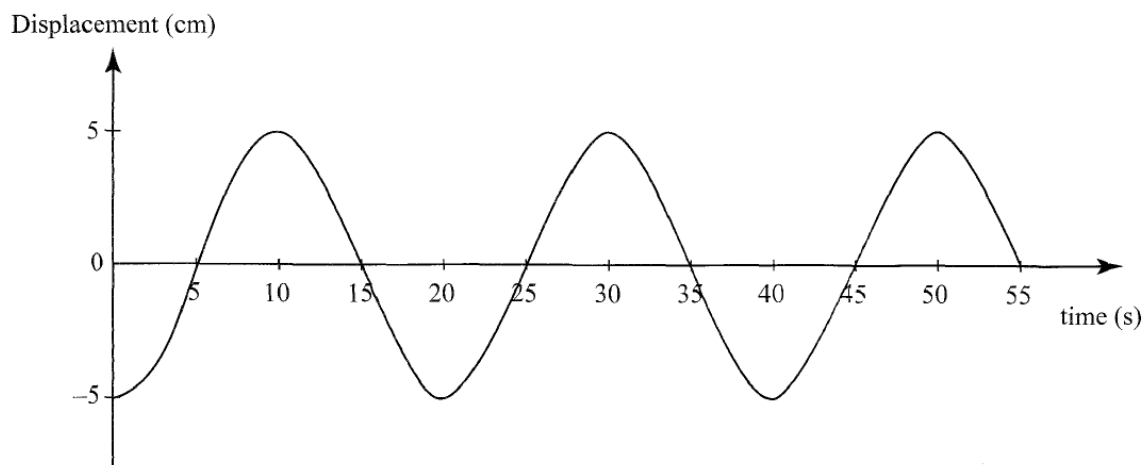


Figure 12

- (i) State the amplitude of the wave. (1 mark)

.....

- (ii) Determine the frequency of the wave. (4 marks)

.....

- (iii) Given that the velocity of the wave is 20 ms^{-1} , determine its wavelength. (3 marks)

.....

© 2012 THE KENYA NATIONAL EXAMINATIONS COUNCIL

Kenya Certificate of Secondary Education, 2012

PHYSICS

Paper 2

THEORY

912029

220020007

- (b) **Figure 13** shows two identical dippers A and B vibrating in water in phase with each other. The dippers have the same constant frequency and amplitude. The waves produced are observed along line MN:

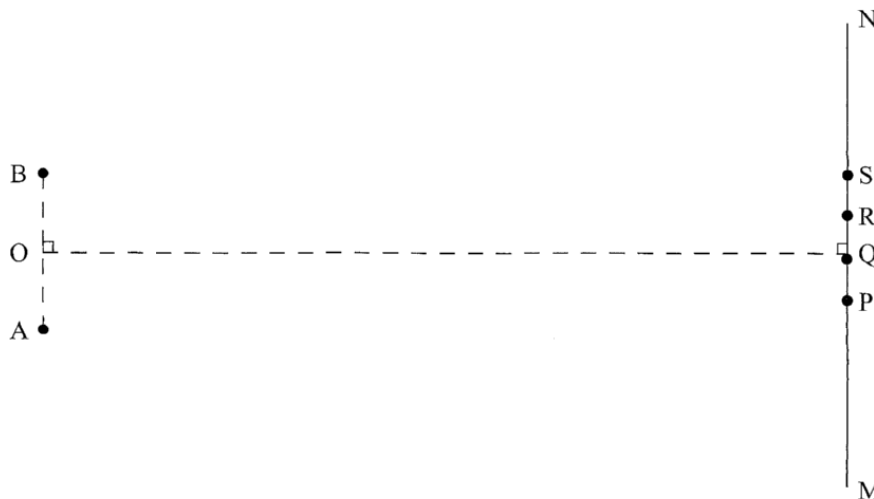


Figure 13

It is observed that the amplitudes are maximum at points Q and S, and minimum at points P and R.

- (i) Explain why the amplitude is maximum at Q. (2 marks)

.....

- (ii) State why the amplitude is minimum at R. (1 mark)

.....

- (iii) State what would happen if the two dippers had different frequencies. (1 mark)

.....

© 2012 THE KENYA NATIONAL EXAMINATIONS COUNCIL
 Kenya Certificate of Secondary Education, 2012
 PHYSICS
 Paper 2
 THEORY

- 15 **Figure 14**, shows a circuit in which a battery, a switch, a bulb, a resistor P, a variable resistor Q, a voltmeter V and two ammeters A_1 and A_2 of negligible resistance are connected.

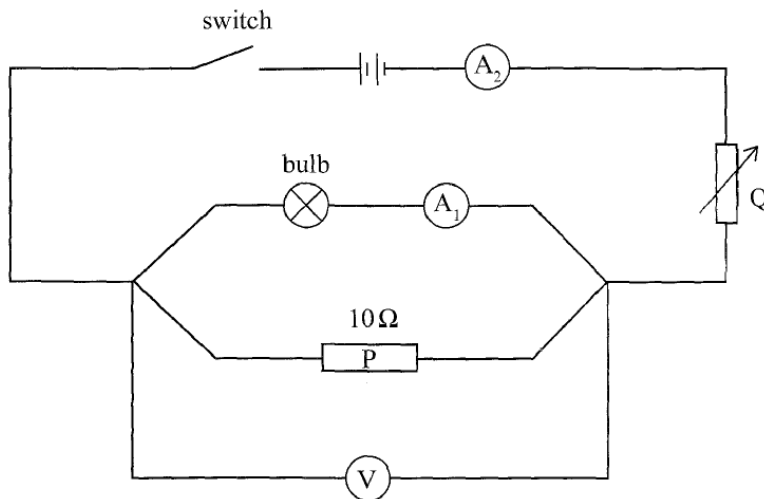


Figure 14

P has a resistance of 10Ω . When the switch is closed A_1 reads 0.10A and the voltmeter reads 1.5V .

- (a) Determine;
- (i) the current passing through P; (3 marks)
-
-
-
- (ii) the resistance of the bulb. (2 marks)
-
-
-

- (b) The variable resistor Q is now adjusted so that a larger current flows through A_2 .
- (i) State how this will affect the resistance of the bulb. (1 mark)
-
- (ii) Explain your answer in (b)(i). (2 marks)
-
-
- (c) A house has one 100 W bulb, two 60 W bulbs and one 30 W bulb. Determine the cost of having all the bulbs switched on for 70 hours, given that the cost of electricity is 40 cents per kilowatt hour. (3 marks)
-
-
-

- 16 (a) **Figure 15**, shows two coils A and B placed close to each other. A is connected to a steady D.C. supply and a switch, B is connected to a sensitive galvanometer.

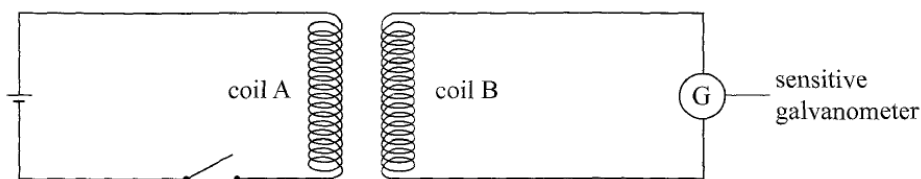


Figure 15

- (i) The switch is now closed. State the observation made on the galvanometer. (2 marks)
-
-

- (ii) Explain what would be observed if the switch is then opened. (2 marks)

.....
.....

(b) The primary coil of a transformer has 1000 turns and the secondary coil has 200 turns.
The primary coil is connected to a 240 V a.c. mains, supply.

- (i) Explain how an e.m.f. is induced in the secondary coil. (2 marks)

.....
.....

- (ii) Determine the secondary voltage. (3 marks)

.....
.....
.....

- (iii) Determine the efficiency of the transformer given that the current in the primary coil is 0.20 A and in the secondary coil it is 0.80 A. (3 marks)

.....
.....
.....

- 17 (a) **Figure 16**, shows a graph of magnification against object distance, for an object placed in front of a lens of focal length 20 cm.

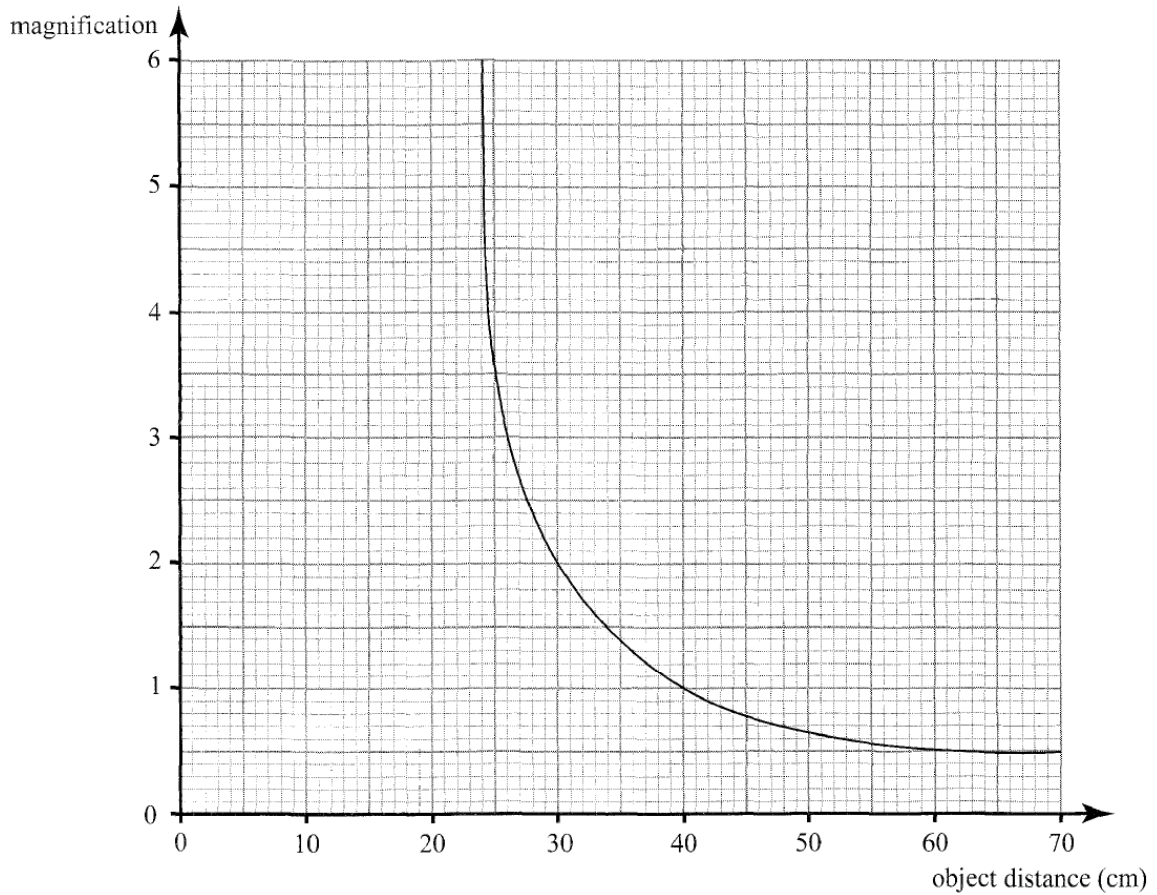


Figure 16

Using the graph;

- (i) State the effect on the size of the image when the object distance is increased from 25 cm. (1 mark)

.....

© 2012 THE KENYA NATIONAL EXAMINATIONS COUNCIL
 Kenya Certificate of Secondary Education, 2012
 PHYSICS
 Paper 2
 THEORY

912029

220020007

Turn over

- (ii) Determine the distance between the object and the lens when the image is the same size as the object. (2 marks)

.....

.....

.....

- (iii) Determine the image distance when the object distance is 25 cm. (3 marks)

.....

.....

.....

- (b) **Figure 17** shows an object O placed in front of a converging mirror of focal length 15 cm.

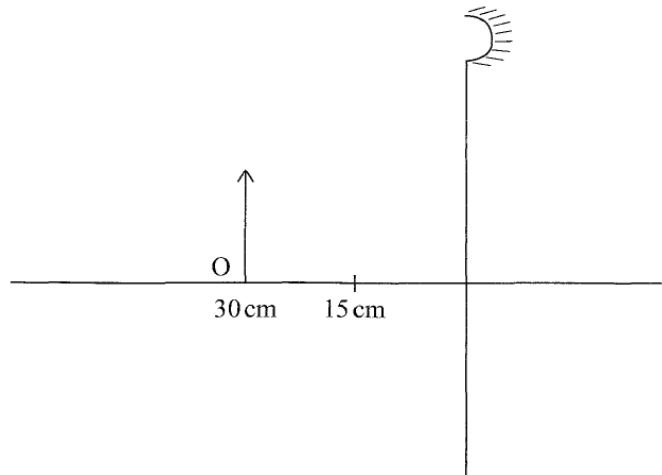


Figure 17

- Draw on the figure a ray diagram to locate the image formed. (3 marks)

- (c) State why parabolic reflectors are used in car headlights. (1 mark)

.....

.....

18 Figure 18 shows the parts of an x-ray tube.

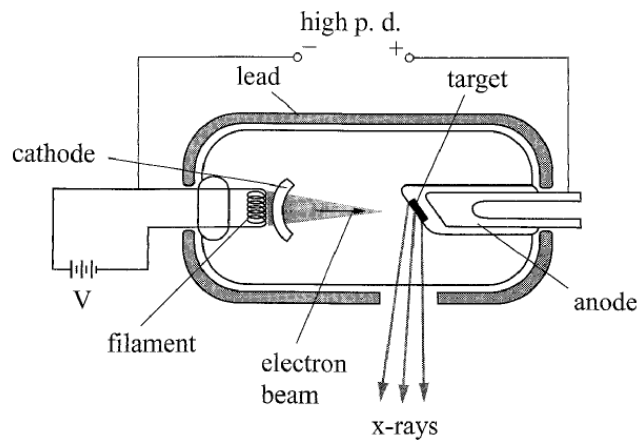


Figure 18

(a) Explain why:

(i) A potential difference is applied to the filament. (2 marks)

.....
.....

(ii) A high potential difference is applied between the cathode and the anode. (2 marks)

.....
.....

(iii) Most of the tube is surrounded by lead. (1 mark)

.....
.....

- (b) State how the resulting x-rays are affected by increasing the potential difference between the anode and the cathode. (1 mark)

.....
.....

- (c) Light of frequency 7.5×10^{14} Hz strikes a metal surface whose work function is 4.0×10^{-19} J. Determine the kinetic energy of the emitted photoelectrons. (4 marks)
(take planks constant $h = 6.63 \times 10^{-34}$ Js)

.....
.....
.....
.....

THIS IS THE LAST PRINTED PAGE.

© 2012 THE KENYA NATIONAL EXAMINATIONS COUNCIL
Kenya Certificate of Secondary Education, 2012
PHYSICS
Paper 2
THEORY

912029

230020007