

4.18 BUILDING CONSTRUCTION (446)

4.18.1 Building Construction Paper 1 (446/1)

1. (a) Safety requirements in:

(i) Storage of tools:

- Tools should be cleaned and oiled
- Small tools should be kept in lockable cabinets
- Tools hanging in open shelves should either be silhouetted or numbered
- Doors to tools store should be lockable
- Keep inventory of tools

(ii) Storage of materials:

- Materials to be stacked in an orderly manner.
- Materials like metal pipes to be kept off the ground in stacks.
- Galvanized iron bars and pipes to be kept in weather proofed stores or sheds

Any (2 x 2 x 1/2) = 2 mark

(b) (i) Baseline:

This is a grid line set on site from which all the other lines will be established when setting out.

(ii) Site datum:

This is a fixed point on site from which all measurements are taken.

2 x 1 = 2 marks

2. (a) Tamping is done using a tamping rod to eliminate air pockets in the concrete. It is also referred to as compaction. Screeding is an operation done by use of a straight edge on freshly laid concrete to achieve the proper grading and slope on the concrete surface.

(1 x 2 = 2 marks)

(b) Disadvantage of using the following materials as dpc

(i) Polythene paper

- It is easily punctured
- it tears easily

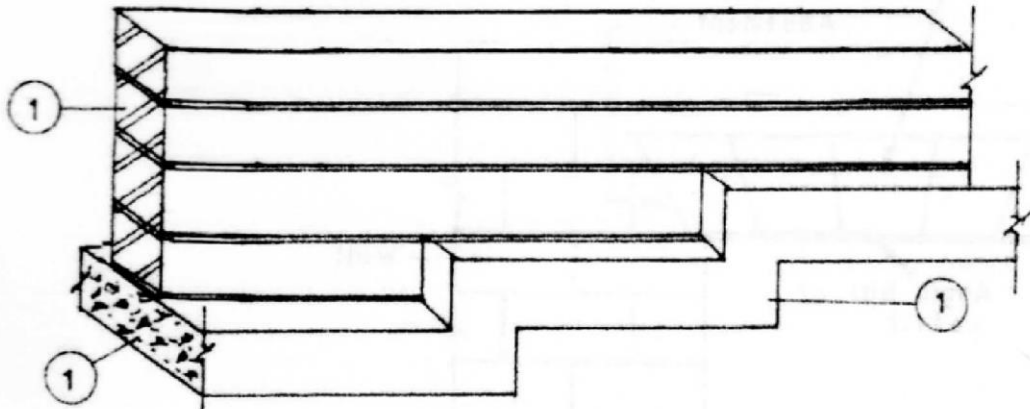
Any 1 x 1 = 1 mark

(ii) Bituminous felt

- it is expensive
- It is not easily available

Any 1 x 1 = 1 mark

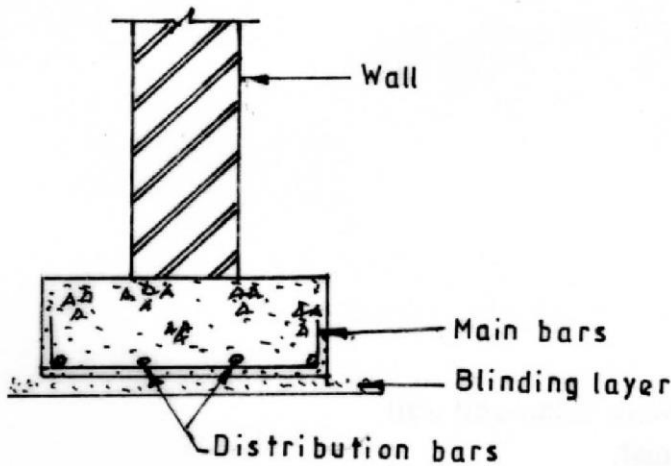
3. (a)



STEPPED FOUNDATION

Total = 3mks

(b) REINFORCED STRIP FOUNDATION

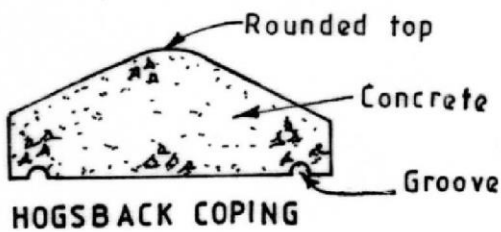


Sketch = 3
 Labels, Any $2 \times \frac{1}{2} = 1$
= 4marks

4. (a) (i) Hot climate
 (ii) Cold climate

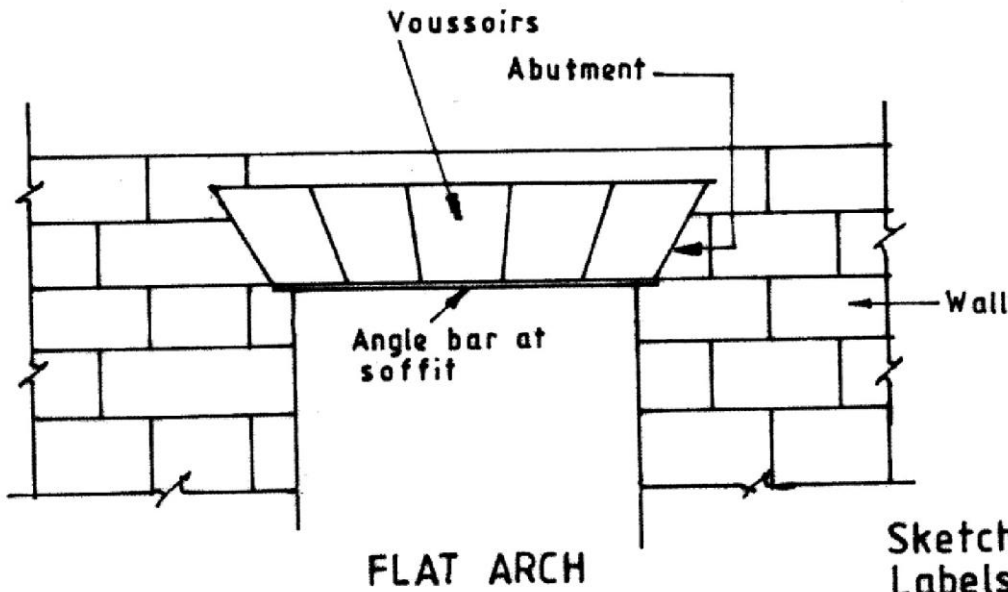
(2 marks)

(b)



Sketch = 1
 Labels, Any $2 \times \frac{1}{2} = 1$
= 2 marks

5.



Sketch = 2
Labels, Any 4 x 1/2 = 2

= 4 mks

6. (a) Functions of

(i) Architrave:

- (Seals) hide joint between frame and wall
- Provide a beautiful finish

(ii) Skirting:

- (seals) hide joint between wall and floor
- provide a beautiful finish
- prevent water splashing on lower wall when washing the floor.

(1 x 2 x 1 = 2 marks)

(b) Recommended pipe sizes for

(i) wash hand basin = ϕ 12 mm

(1 mark)

(ii) bath tub = ϕ 20 mm

(1 mark)

7. Functional requirements of

(i) Doors

- Properly hung to open and close with ease
- Sufficient fire resistance
- Sufficient sound insulation
- Strong
- Weather resistance

(Any 2 x 1 = 2 marks)

(ii) Walls:

- Strong and stable
- Carry their own weight and loads from above
- Adequate fire resistance
- Adequate sound insulation.
- Weather resistance

(Any 2 x 1 = 2 marks)

8. Pointing is a finish on masonry joints done after the walling is complete while jointing is a finish on masonry joints done as the work proceeds.

(2 x 1 = 2 marks)

9. (a) Functions of parts of a scaffold:

(i) Baseplates

- It distributes the weight of standard
- It supports the standard
- It is for adjusting heights in adjustable baseplates
- It is for swivelling on sloping ground

(ii) Guard rail

- It prevents the workers from falling off
- It prevents materials from falling off.

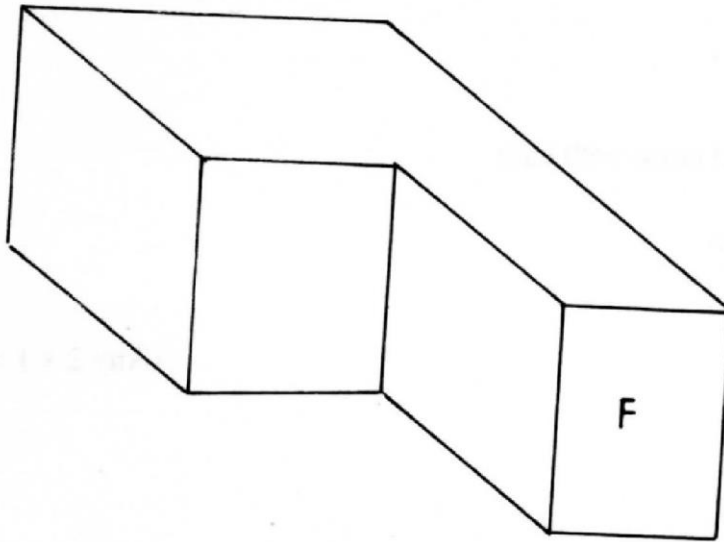
(Any 1 x 2 = 2 marks)

(b) Activities at the end of a construction project

- handing over the site
- making good the surrounding
- removing machines used
- demolishing the site huts

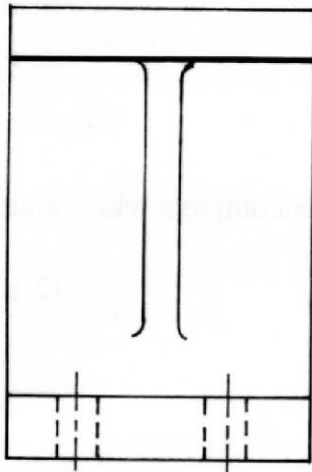
(Any 2 x 1 = 2 marks)

10.



- Interpretation = 1 mark
- Correct oblique angle = 1 mark
- Line work = 1 mark
- Correct scale = 1 mark
- 4 marks

11.



PLAN

- Correct 3 Angle projection = 2
- Correct scale 1:1 = 2

FRONT ELEV

- Outline = 1
- Hidden detail = 1
- Web = 1
- Holes = 2

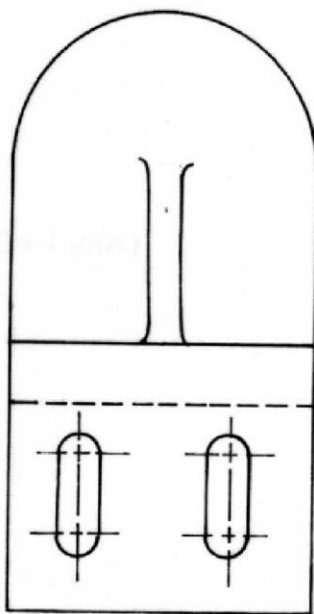
END ELEV

- Outline = 1
- Hidden detail = 1
- Web = 1

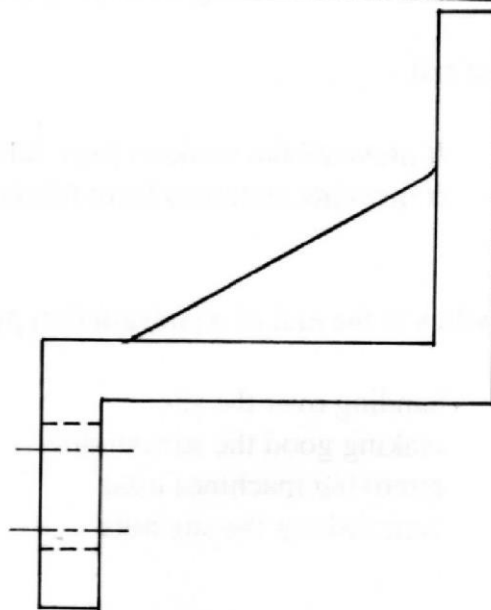
PLAN

- Outline = 1
- Hidden details = 1
- Web = 1

Total = 15 mks



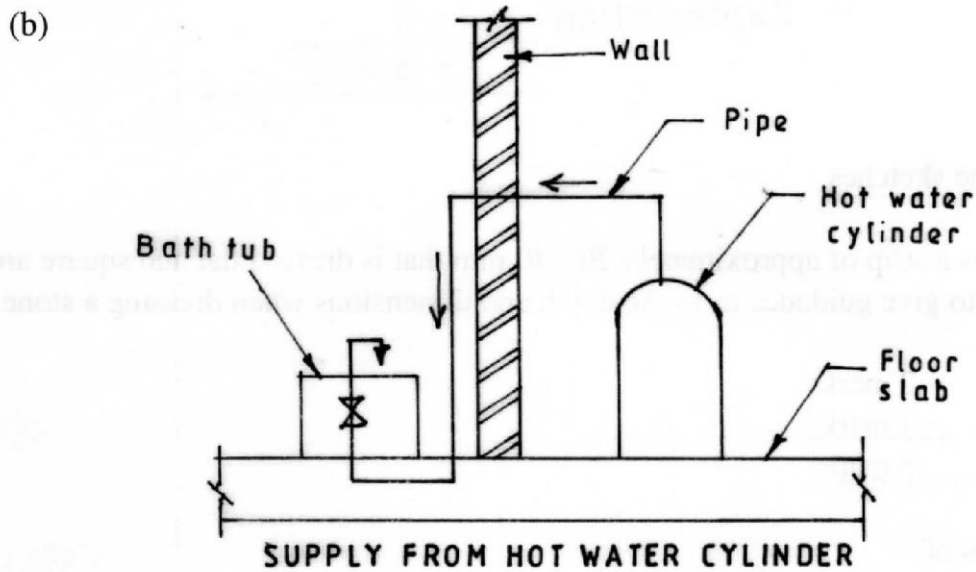
FRONT ELEV.



END ELEV.

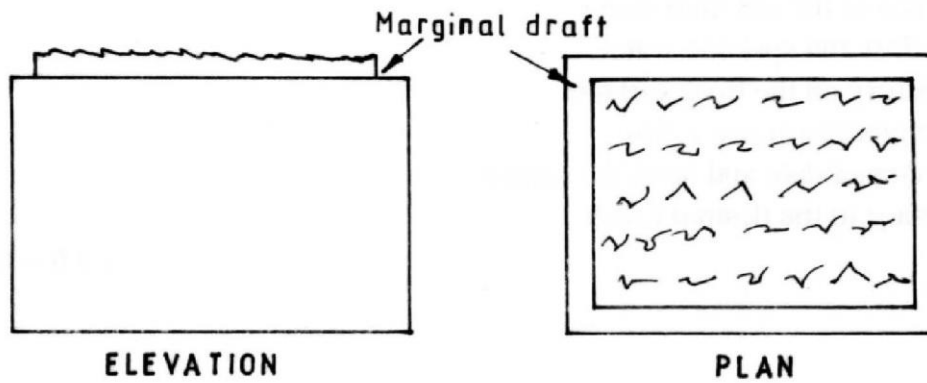
12. (a) Procedure of laying a floor screed
- (i) Hack the surface of the old floor slab
 - (ii) Brush off the dust and sprinkle water
 - (iii) Pour cement slurry on the floor surface
 - (iv) Mix mortar to predetermined ratios
 - (v) Pour, spread, consolidate and level the screed
 - (vi) Finish the surface to the desired finish

(1 x 6 = 6 marks)



Sketch	= 2
Labels, Any 4 x 1/2	= 2
	= 4 mks

12. (c)



• ACCEPT ANY ONE OF THE SKETCHES

Sketch	= 2
Explanation	= 3
	<hr/>
	= 5 mks

Accept either of the sketches

A marginal draft is a strip of approximately 20 - 40 mm that is dressed flat and square around a surface of a stone to give guidance as to the depth and dimensions when dressing a stone.

Sketch	-	2 marks
Explanation	-	<u>3 marks</u>
		<u>5 marks</u>

13. (a) Advantages of:

(i) Oil - based paints

- Easy to clean the surface
- They are resistant to fading / don't fade
- They are attractive
- They are durable

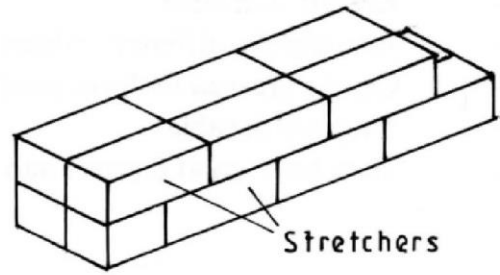
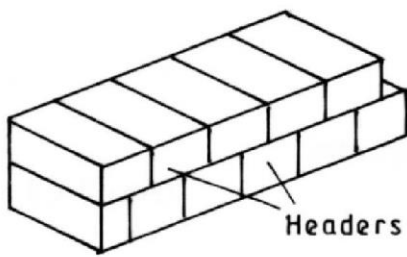
(Any 2 x 1 = 2 marks)

(ii) Water - based paints

- Easy clean up
- Have stable colour over time
- Dry quickly
- They are odour free

(Any 2 x 1 = 2 marks)

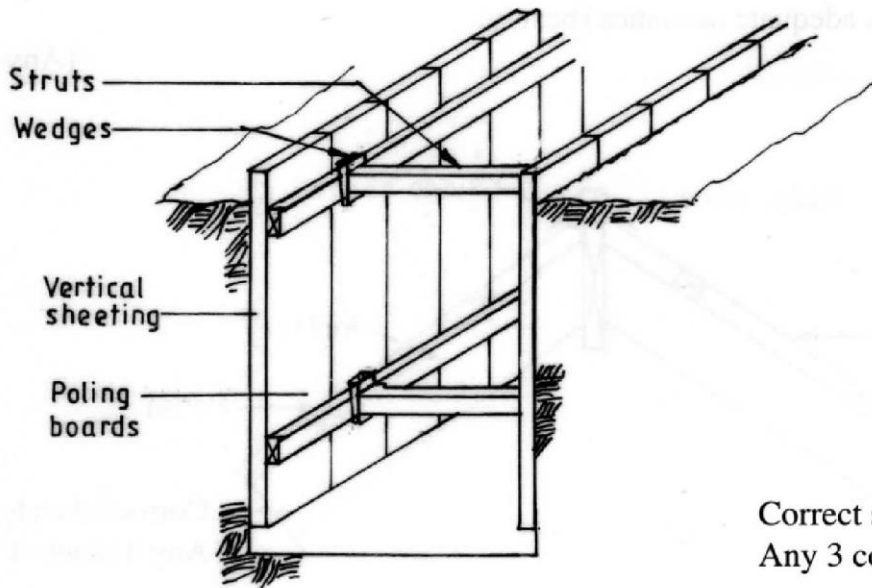
13. (b)



Headerbond consists of entire headers showing on the face of the wall while stretcher bond has an arrangement showing only stretchers on the face of the wall.

Sketching	2 x 2 =	4 marks
Explanation	2 x 1 =	2 marks
	<u> </u> =	<u>6 marks</u>

13. (c)



Correct sketch = 2 marks
 Any 3 correct labels = 3 marks
5 marks

14. (a) Advantages of stones

- Readily available
- Available in different colours and textures
- Can be dressed to the desired shape and size
- They are durable
- They have good thermal and sound insulation properties

(Any 4 x 1 = 4 marks)

(b) Functions of the following:

(i) Plaster

- Is a background for other finishes that are more durable like paint etc
- Provides an attractive surface / aesthetics
- Provides a weather and water resistant surface
- Provides a surface that is resistant to chemical attack

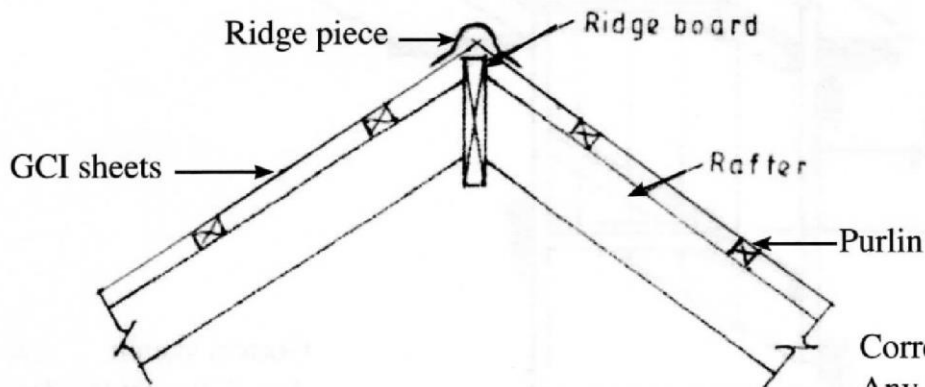
(Any 3 x 1 = 3 marks)

(ii) Floor screed

- Provide a hard surface finish
- Provides a surface for other finishes like tiles etc
- Provides adequate thermal insulation
- Provides adequate acoustics (beauty).

(Any 3 x 1 = 3 marks)

(c)

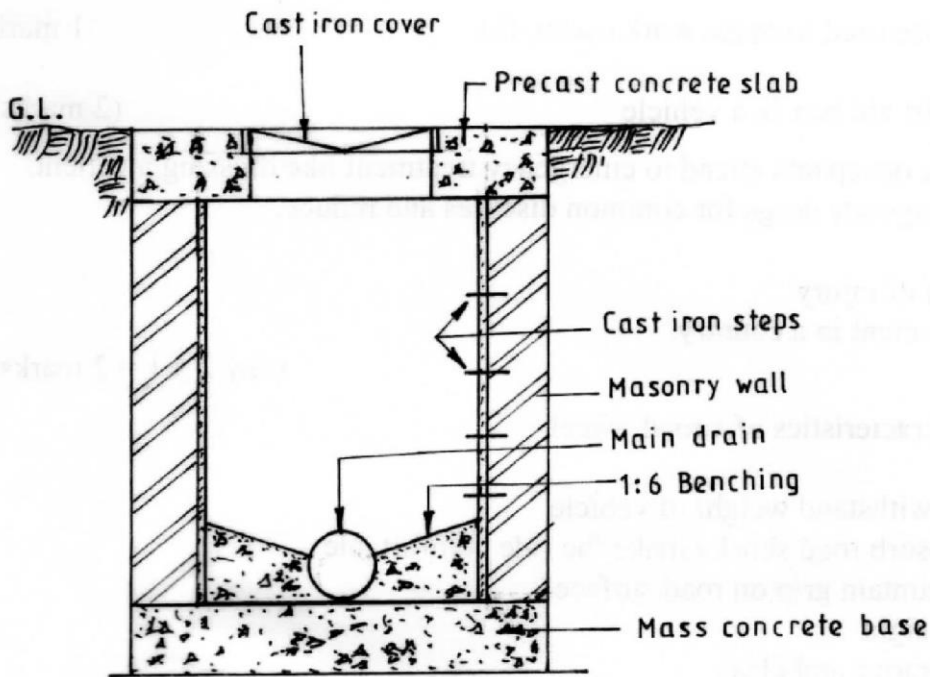


Correct sketch = 3 marks

Any 4 labels $4 \times \frac{1}{2} = 2$ marks

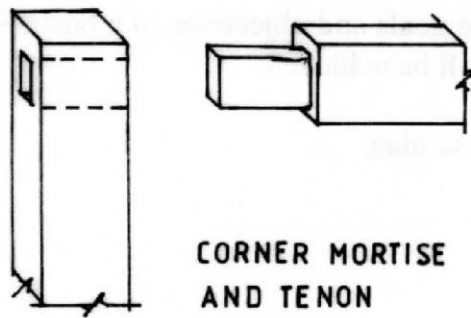
5 marks

15. (a)



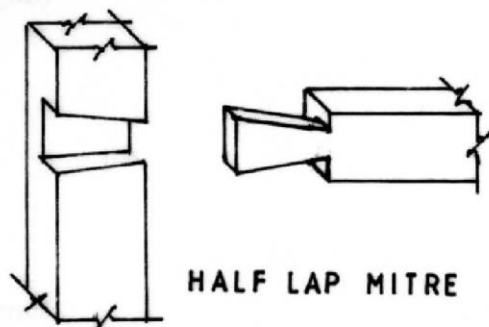
SKETCH = 6
LABELS, Any 6x½ = 3
Total = 9 mks

15. (b) (i) Corner Mortise and Tenon



Sketch = 3 marks

(ii) Half lap dovetail tee joint



Sketch = 3 marks