

3.13.2 Home Science Paper 2 (441/2)

A pattern of a pair of shorts is provided. You are advised to study the sketches, instructions and the layout carefully before you begin the test.

Materials Provided

1. Pattern Pieces
 - A. Short front
 - B. Short back
 - C. In-seam pocket
 - D. Waistband
2. Plain light weight cotton fabric 60cm long and 90cm wide.
3. Sewing thread to match.
4. One large envelope.

THE TEST

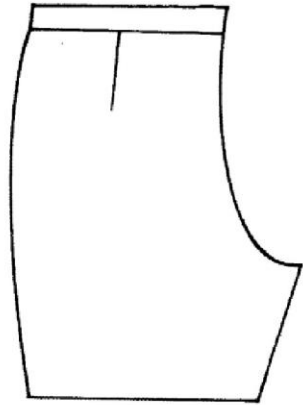
Using the materials provided, lay, cut out and make the **LEFT LEG** of the pair of shorts to show the following processes:

- (a) Cutting out. (9 marks)
- (b) Making of the back dart. (8 marks)
- (c) Attaching the in-seam pocket. (16 marks)
- (d) Working of the side seam using an open seam. (Above and below the pocket seam). (9½ marks)
- (e) Working of the inner leg seam using a double stitched seam. (8 marks)
- (f) Making the knife pleats on the short front and attaching the waistband. (Do not interface) (20 marks)
- (g) Complete half of the waistband using hemming stitches. (3 marks)
- (h) Managing the hem of the short by holding it in place using tacking stitches. (10 marks)
- (i) Overall presentation. (6½ marks)

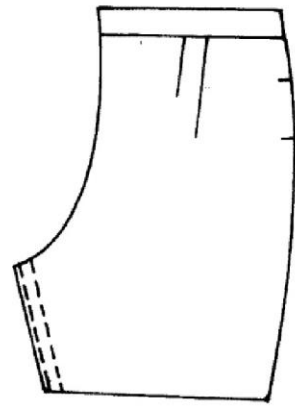
At the end of the examination, firmly sew onto your work, on a single fabric, a label bearing your name and index number. Remove the needle, pins and loose threads from your work. Fold your work neatly and place it in the envelope provided.

Do not put scraps of fabric in the envelope.

SHORT VIEW



BACK



FRONT

LAYOUT (Not drawn to scale)

