



441/2 – HOME SCIENCE – Paper 2
(CLOTHING CONSTRUCTION) (PRACTICAL)
Nov. 2017 – 2½ hours

Instructions to candidates

- (a) *This paper consists of 3 printed pages.*
 - (b) *Candidates should check the question paper to ascertain that all the pages are printed as indicated and that no questions are missing.*
 - (c) *Candidates **MUST** use machine stitches appropriately in the construction of the garment. Hand stitches used **INSTEAD** of machine stitches will not be marked.*
 - (d) *Hand stitches will only be allowed for the making of tacking and loop stitches.*
-



GIRL'S DRESS

A pattern of a girl's dress is provided. You are advised to study the sketches, instructions and the layout carefully before you begin the test.

MATERIALS PROVIDED

1. Pattern Pieces
 - A. Skirt front and back
 - B. Bodice front
 - C. Bodice back
 - D. Sleeve
 - E. Back neck facing

2. Plain lightweight cotton fabric 60 cm long and 90 cm wide.

3. Sewing thread to match the fabric.

4. One large envelope.

THE TEST

Using the materials provided, lay, cut out and make the **LEFT HALF** of a girl's dress to show the following processes:

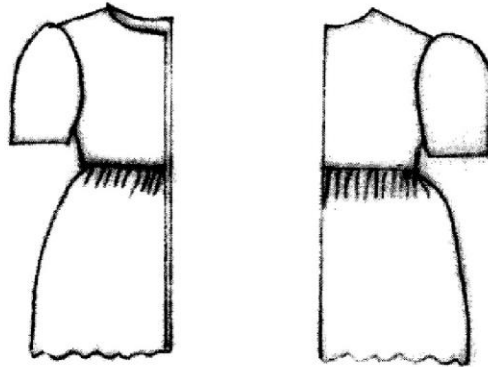
- (a) Cutting out. (13½ marks)
- (b) Making of the shoulder seam using an open seam. (8 marks)
- (c) Joining the back neck facing to the extended front facing. Attaching the facing to finish the neckline. (16 marks)
- (d) Making the bodice side and underarm seam using a french seam. (11 marks)
- (e) Preparing and attaching the sleeve to the armhole. Neaten a quarter of the armhole seam from the underarm seam using loop stitches. Manage the sleeve hem with tacking stitches. (19 marks)
- (f) Preparing the skirt using gathers and attaching it to the bodice. (12 marks)



- (g) Neatening the free-edge of the facings. (4 marks)
- (h) Overall presentation. (6½ marks)

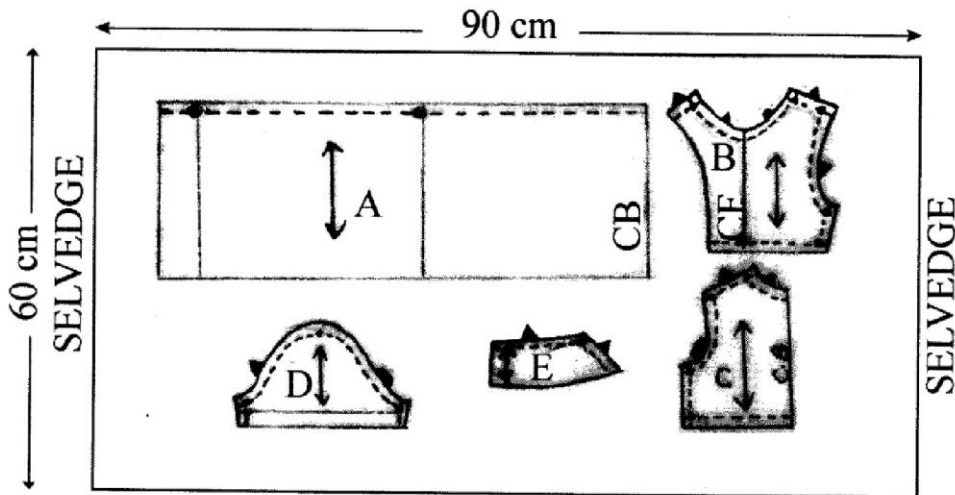
At the end of the examination, firmly sew onto your work, on a single fabric a label bearing your name and index number. Remove the needle, pins and loose threads from your work. Fold your work neatly and place it in the envelope provided. **Do not put scraps of fabric in the envelope. Do not seal the envelope.**

DRESS VIEW



FRONT VIEW BACK VIEW

LAYOUT (Not drawn to scale)



THIS IS THE LAST PRINTED PAGE.