

THE ROYAL EXAM SERIES

Kenya Certificate of Secondary Education

443/2 — AGRICULTURE — Paper 2



FORM 4

TERM 2



DECEMBER 2021- 2 HOURS

Name..... Index Number:.....

School.....

Candidate's Signature..... Date.....

Instructions to candidates.

- (i) Write your **name** and **index number** in the spaces provided.
- (ii) This paper consists of three sections **A, B** and **C**.
- (iii) Answer **ALL** the questions in section A and B and any two questions in section C.
- (iv) All answers must be written in the spaces provided.
- (v) Do not remove any pages from the question paper.

For Examiner's use only

Section	Questions	Maximum score	Candidates score
A	1-18	30	
B	19-22	20	
C		20	
		20	
	Total Score	90	

SECTION A (30 marks)

Answer all questions in this section in the spaces provided

1. Give two uses of the roof of cattle dip tank. (1mk)
.....
.....

2. State two causes of soft shelled eggs. (1mk)
.....
.....

3. Give four signs of farrowing in a sow. (2mks)
.....
.....
.....

4. Outline four causes of cannibalism in a flock of layers in the deep system. (2mks)
.....
.....
.....

5. State four maintenance practices carried out on a Jack plane. (2mks)
.....
.....
.....

6. State three uses of solar power on the farm. (1½ mks)
.....
.....
.....

7. Name four types of layer breeds of chicken. (2mks)
.....
.....
.....

8. Give the distinguishing characteristics of Essex and Wessex Saddle back breed of pigs.(1mk)
.....

9. Give four symptoms of brucellosis in cows. (2mks)

.....

.....

.....

.....

10. State four reasons why inbreeding may be useful in livestock production. (2mks)

.....

.....

.....

.....

11. Give two effects of Tsetse flies on livestock. (1mk)

.....

.....

12. Name two types of rabbit houses. (1mk)

.....

.....

13. List four types of vaccines used in livestock production. (2mks)

.....

.....

.....

.....

14. Name four types of pests that affect bees. (2mks)

.....

.....

.....

.....

15. Outline three reasons why farmers dehorn cattle. (1¹/2mks)

.....

.....

.....

16. (a. Differentiate between cropping and harvesting as used in fish production. (1mk)

.....

b. Name two species of fresh warm water fish. (1mk)

.....

17. Give four reasons for steaming up dairy cattle.

(2mks)

.....

.....

.....

18. List four post milking practices.

(2mks)

.....

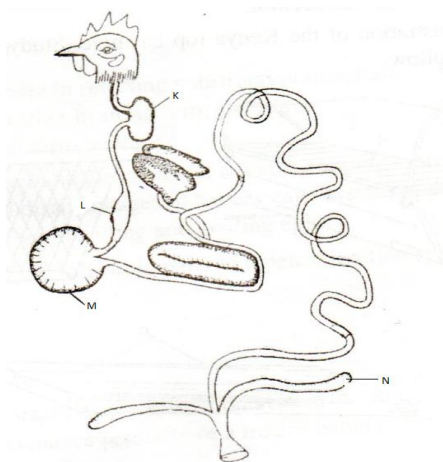
.....

.....

SECTION B (20 Marks)

Answer all questions in this section in the spaces provided.

19. The diagram below shows the digestive system of a chicken. Study it and answer question that follow.



(a) . Identify the parts labeled **K,L,M** and **N** above.

(2mks)

K.....

L.....

M.....

N.....

(b) . Give the function of the part labeled **M** that makes it efficient in digesting food. (2mks)

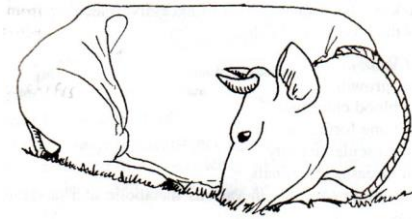
.....

(C) . Give two characteristics of the part labeled **M** that make it efficient in digesting food.(1mk)

.....

.....

20. Study the illustration below showing an animal suffering from a disease. Study it and answer question that follow.



(a) . Identify the disease the animal is suffering from. (1mk)

.....

(b. What causes the disease shown above? (1mk)

.....

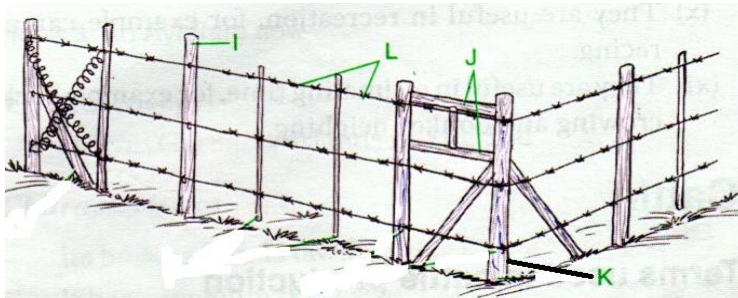
(c. Give three symptoms shown by a cow suffering from the disease above. (3mks

.....

.....

.....

21. Study the farm structure shown below and answer questions that follow.



(a). Identify the structure shown above. (1mk)

.....

(b) . Name the parts labeled **I,J,K** and **L**. above. (2mks)

I.....

J.....

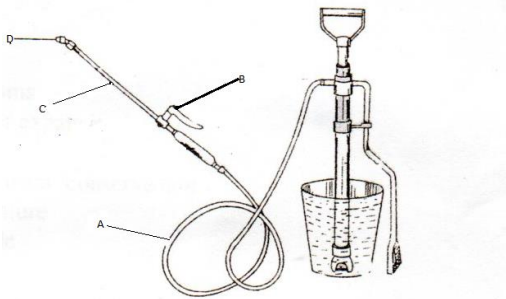
K.....

L.....

(c) . Give two disadvantages of using the structure above in pasture fields. (1mk)

.....

22. The diagram below shows a stir up pump. Study it and answer questions that follow.



(a. Name the parts labeled **A,B,C** and **D**. (2mks)

A.....

B.....

C.....

D.....

(b. State two maintenance practices that should be carried out on the equipment illustrate above (2mks)

.....

(c. State one disadvantage of using the equipment above in controlling ticks. (1mk)

.....

SECTION C (20 Marks)

Answer any TWO questions in this section in the spaces provided.

23. (a) .Describe Newcastle disease under the following sub headings

(i) Causal organism (1mark)

.....

(ii) Symptoms (6marks)

.....

.....
.....
.....
.....

(c) Describe management practices that would ensure clean milk production in a dairy farm. (8marks)

.....
.....
.....
.....
.....
.....
.....
.....
.....
.....
.....
.....
.....
.....
.....
.....
.....
.....
.....
.....
.....
.....

25. (a). Describe the symptoms of liver fluke infestation in livestock (6marks)

.....
.....
.....
.....
.....
.....
.....
.....
.....
.....
.....
.....
.....
.....
.....
.....
.....
.....
.....
.....
.....
.....

(b) Explain the rearing of chicks from 1 day old to 8 weeks old. (14 marks)

.....
.....

