

THE ROYAL EXAM SERIES

Kenya Certificate of Secondary Education

441/2 — HOME SCIENCE — Paper 2

CLOTHING CONSTRUCTION

PRACTICAL

FORM 4

TERM 2



DECEMBER 2021- 2¹/₂ HOURS

Name..... Index Number:.....

School.....

Candidate's Signature..... Date.....

INSTRUCTIONS TO THE CANDIDATES

1. Ensure that the paper has all pages as printed as indicated and that NO questions are missing
2. Candidates must use machine stitches appropriately in the construction of the garment and hand stitches used instead of machine stitches will not be marked.
3. Hand stitches will only be allowed where specified.

A pattern of a girl's dress is provided.

You are advised to study sketches, instructions and the layout carefully before you begin the test.

MATERIALS PROVIDED

1. Pattern pieces
 - A – Bodice Front
 - B- Bodice Back
 - C – Skirt Front
 - D – Skirt Back
 - E - Frill

2. Plain weight cotton fabric 73 cm long by 90 cm wide
3. Cotton sewing thread to match the fabric.
4. 1 cm button
5. One large envelope

TEST

Using the materials provided cut out and make the **LEFT HALF** of the child's dress to show the following processes;

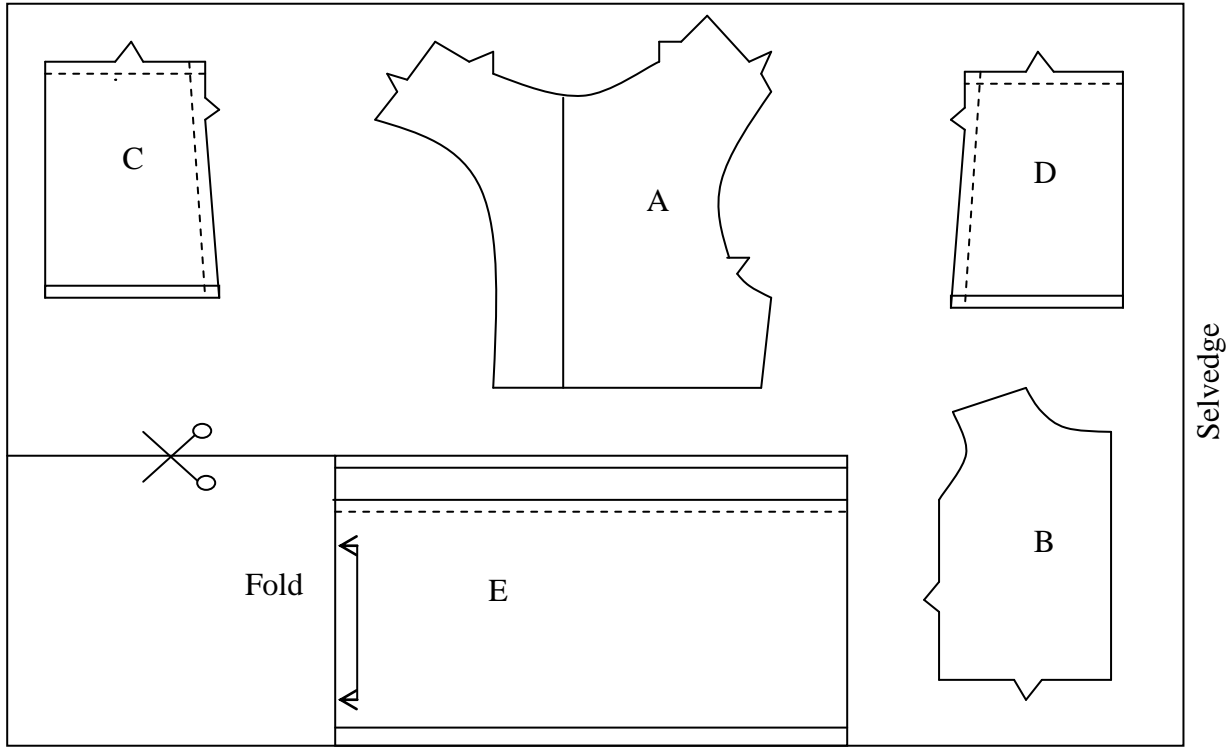
- a) Presentation and cutting out. (22mks)
- b) Making of the front dart. (7mks)
- c) The neatening of the free edge of the facing (5mks)
- d) The folding of front facing and using it to neaten the front neckline (7mks)
- e) Working of the shoulder seam using double stitched seam. (8mks)
- f) i) The joining of the bodice front to the skirt front using a plain seam.
ii) The joining of the bodice back to the skirt back using a plain seam. Neaten the seam using loop stitch **10cm from CF.** (11mks)
- g) Joining of both the bodice and the skirt side seams by use of an open seam. (8mks)
- h) Preparing the gathers on the frill and attaching to the lower skirt using an overlaid seam. Neaten the seam using overcasting stitches **10 cm from Centre Front.** (10mks)
- i) Managing the hem on the lower side and holding it using long and short tackings. (7mks)
- j) Attaching the button. (5mks)

At the end of the examination, firmly sew onto your work, on a single fabric, a label bearing your name and index number. Remove needles and pins from your work, fold your work neatly and place it in the envelope provided. Don't put scraps of fabric in the envelope.

LAYOUT (NOT DRAWN TO SCALE)

90 cm

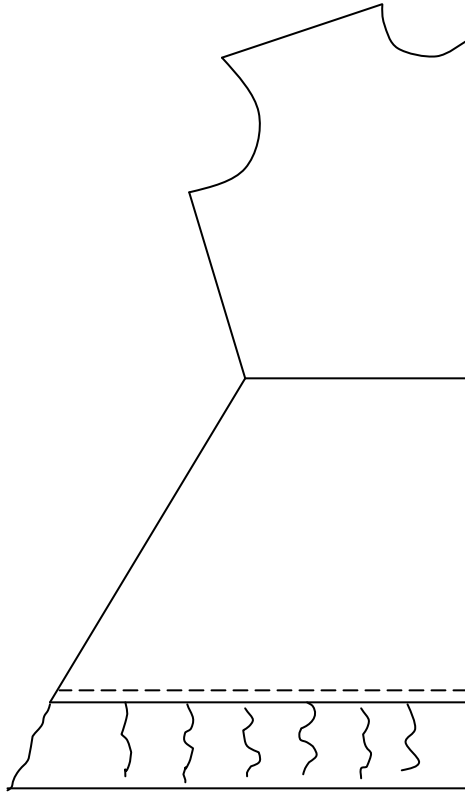
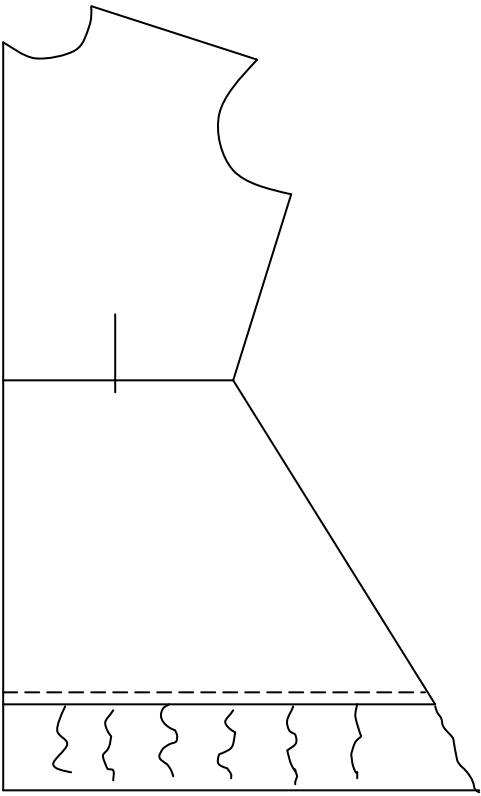
73 cm



VIEW

FRONT VIEW

BACK VIEW



0