

NAME:.....Index NO.....

Candidate's Signature.....Date.....

THE ROYAL SERIES
Kenya certificate of Secondary Education
Trial 3, 2021
511/3 music paper 3

511/3 music paper 3

December 2021

Time: 2½ hours

Instructions to Candidates

- Write your name and Index number in the spaces provided above
- Sign and write the date in the spaces provided
- Answer all the questions in the spaces provide
- In question 4, choose any two of the questions numbered (a), (b), (c) and (d).
- In question 6, use the score too much/once lamented by Beethoven
- Check to ascertain that all pages are printed.

For Examiner's use only

SECTION	QUESTION	MAXIMUM SCORE	CANDIDATE'S SCORE
A	1(a)	09	
	1(b)	06	
	2	15	
B	3	14	
	4	14	
	5	10	
	6	10	
	7	06	
	8	16	
Total		100	

SECTION A: BASIC SKILLS (30MKS)

1. (a) Starting the given opening, make a melody of 16 bars for voice, incorporating a sequence and appropriate tempo variations. Modulate to the relative major and back to the tonic. (09mks)

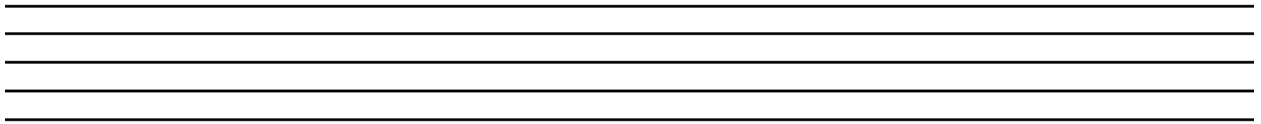


Four sets of empty musical staves, each consisting of five lines, provided for the student to write their 16-bar melody.

- (b) Using staff notation, write a tune and fit the following words. (6mks)

Kenya yetu nchi nzuri, ni lazima tuilinde,
Tupendane kama ndugu, tuijenge nchi yetu.

Two sets of empty musical staves, each consisting of five lines, provided for the student to write a tune for the given lyrics.

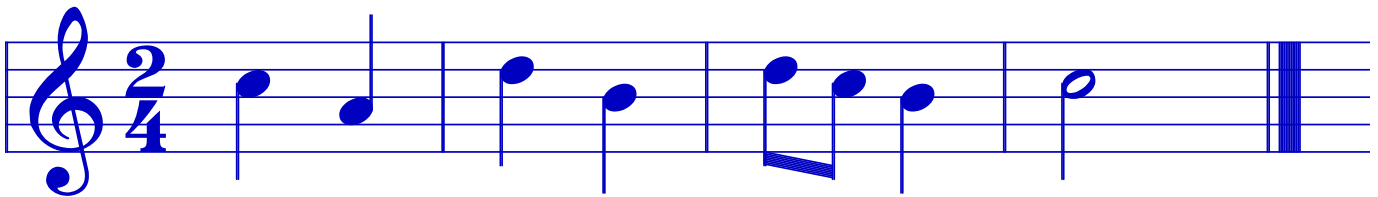


2. Harmony

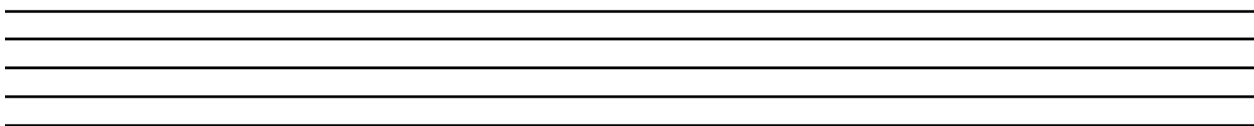
Harmonize the following for soprano, Alto, Tenor and Bass. (SATB) use the Dominant seventh, appropriate chords from the following:-

I, ii, iv, v and vi

(15mks)



$1\frac{6}{4}$ V7



SECTION B: HISTORY AND ANALYSIS (54 MARKS)

AFRICAN MUSIC

(a) State any three solo performance songs. (3mks)

(b) Name any three techniques of producing sound on an Idiophone. (3mks)

(c) Identify any three of the following dances:- (3mks)

(i) Adet

(ii) Mumburo

(iii) Gonda

(iv) Ekegogo

(v) Chakacha

(vi) Shimambo

(d) (i) Identify the two melodic Idiophones. (2mks)

(ii) State any two roles of a lullaby in an African Traditional society. (2mks)

(e) Nzumari is a trumpet. Explain. (1mk)

4. **WESTERN COMPOSERS**

(Answer any two of the questions (a), (b), (c) and (d))

(a) William Byrd

(i) State any two characteristics of the Elegy for Tallis that Byrd composed. (1mk)

(ii) Identify any two common activities in music composition by both Tallis and Byrd. (2mks)

(iii) Outline any two contributions by Byrd to the English vocal music. (2mks)

(iv) How did Byrd share his musical ideas with other people? (2mks)

(b) Joseph Haydn

(i) In what form is the third movement of Haydn's symphonies? (1mk)

(ii) For what media was Haydn's work called the Emperor quartet? (2mks)

(iii) Name any two common musical duties that Joseph Haydn carried while in the family of Esterhazy. (2mks)

(iv) Describe any two symphonies out of these given below. (2mks)

- (a) The surprise symphony
- (b) The military symphony
- (c) The clock symphony

(c) Franz Liszt

(i) Outline any three of Liszt's contributions to instrumental music. (3mks)

(ii) What is a symphonic poem? (1mk)

(iii) State three characteristics of Liszt piano music. (3mks)

4. (d) Bella Bartok

(i) Identify any two areas where Bella Bartok specialized. (2mks)

(ii) State three ways in which folk music assisted Bartok. (3mks)

(iii) Outline any two influences on Bela Bartok's compositions. (2mks)

5. **Prescribed Traditional African Music.**

(chivoti by Diwani Nzaro from you tube)

(i) Identify the media of this recording. (2mks)

(ii) State the variation at the introduction. (2mks)

(iii) Explain the main media in this performance. (3mks)

(iv) What is the main role of the Idiophones in this performance? (2mks)

(v) State any three characteristics of African music that is used in this performance. (3mks)

6. **Prescribed Western Music Analysis:-**

(Too much I once lamented by Beethoven)

(i) Use the bar numbers to identify the first two statements before the first refrain of Fa La Las. (2mks)

(ii) Identify any two differences in the five melodic strands as used in this piece. (2mks)

(iii) What is the difference between bars 13-23 and bars 59-63? (2mks)

(iv) Indicate any specific music device used at bars 5-6 by tenor, bars 62-63 by soprano I and bars 34 and 35 by the whole choir. (2mks)

(v) State any two differences in the Bass line between the first Fa Lala refrain and the second Fa la la refrain. (2mks)

7. Analysis of unprepared work. Study the music below and answer the questions that follow.

(i) In which music form is this piece? (2mks)

(ii) To which key does the melody modulate at bars 15-16? (1mk)

(iii) Name the solfa sounds at bars 23-24. (2mks)

(iv) What is the meter of this piece? (1mk)

SECTION C – GENERAL MUSIC KNOWLEDGE

8. (a) What is the importance of our Kenya music festivals (KMF)? (3mks)

(b) Translate the following melody from solfa notation to staff notation doh is G. (6mks)

m:-, f/m.r:d.t/d.,r:m.f/r:-/d.t,:l,t,/d:t/d:-/-:-//



(c) Write the following on a closed score.

(6mks)

The image shows a photograph of a musical score with four staves. The first staff is in black ink, the second in blue ink, and the third and fourth in black ink. All staves are in 3/4 time and B-flat major. The first staff contains a melody with a bracketed eighth-note pair. The second staff contains a melody with a dotted quarter note. The third staff contains a melody with a dotted quarter note. The fourth staff contains a melody with a dotted quarter note.

