

SAMIA JOINT EVALUATION EXAMS

511/2

MUSIC AURALS

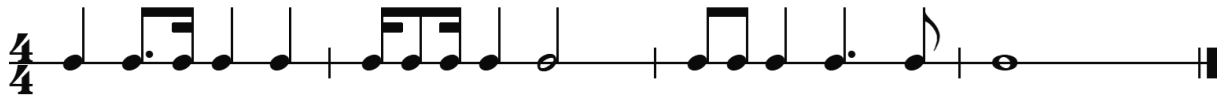
1 a).



1/2 x 6 per rhythm = 3mks

1/2 for T.S, 1/2 for Bar lines = 1mk

b).



1/2 x 16 rhythms = 8mks

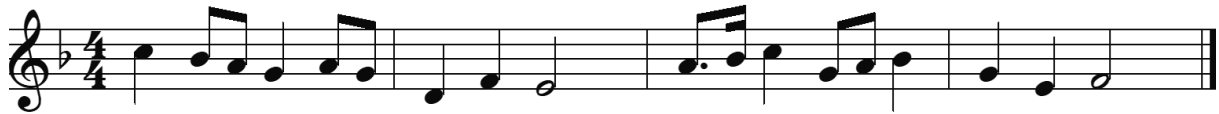
c).



1/2 x 16 rhythms = 8mks

2 a).

1/2 x 18 pitches = 9mks; 1/2 for T.S and K.S each



b).

1/2 x 18 pitches = 9mks; 1/2 for T.S and K.S each



3). i). Perfect 5th

ii). Major 7th

4). i). Imperfect

ii). Plagal

iii). Interrupted

iv). Perfect

5). a). A Major (Dominant)

b). C Minor (Relative Minor)