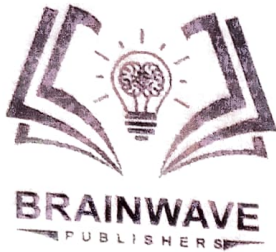


BRAINWAVE K.C.P.E EXAMINATION PANEL

STANDARD EIGHT

YEAR 2022



004

SOCIAL STUDIES & RELIGIOUS EDUCATION

Time :2 Hrs 15 min

READ THESE INSTRUCTIONS CAREFULLY.

1. You have been given this question booklet and a separate answer sheet. The question booklet contains 50 questions.
2. Do any necessary rough work in this booklet.
3. When you have chosen your answer, mark it on the **ANSWER SHEET**, not in the question paper.

HOW TO USE THE ANSWER SHEET.

4. Use an ordinary pencil only.
5. Make sure that you have written on the answer sheet.

YOUR INDEX NUMBER
YOUR NAME
NAME OF YOUR SCHOOL

6. By drawing a **dark line** inside the correct numbered boxes mark your full index number (i.e. school code Number and the three -figure candidate's Number) in the grid near the top of the answer sheet.
7. Do not make any marks outside the boxes.
8. Keep your answer sheet as clean as possible and **Do not fold it**.
9. For each questions 1-50 four answers are given. The answers are lettered A, B, C, D. In each case Only One of the four answers is correct. Chose the **correct answer**.
10. On the answer sheet show the correct answer by drawing a dark line inside the box in which the letter you have chosen is written.

Example

In the question Booklet:

34. Which one of the following is a fold mountain found in the Northern hemisphere?
- A. Drakensberg
 - B. Ahaggar
 - C. Cape Ranges
 - D. Atlas

The correct answer is **D (Atlas)**

On the answer sheet:

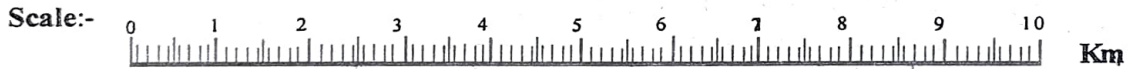
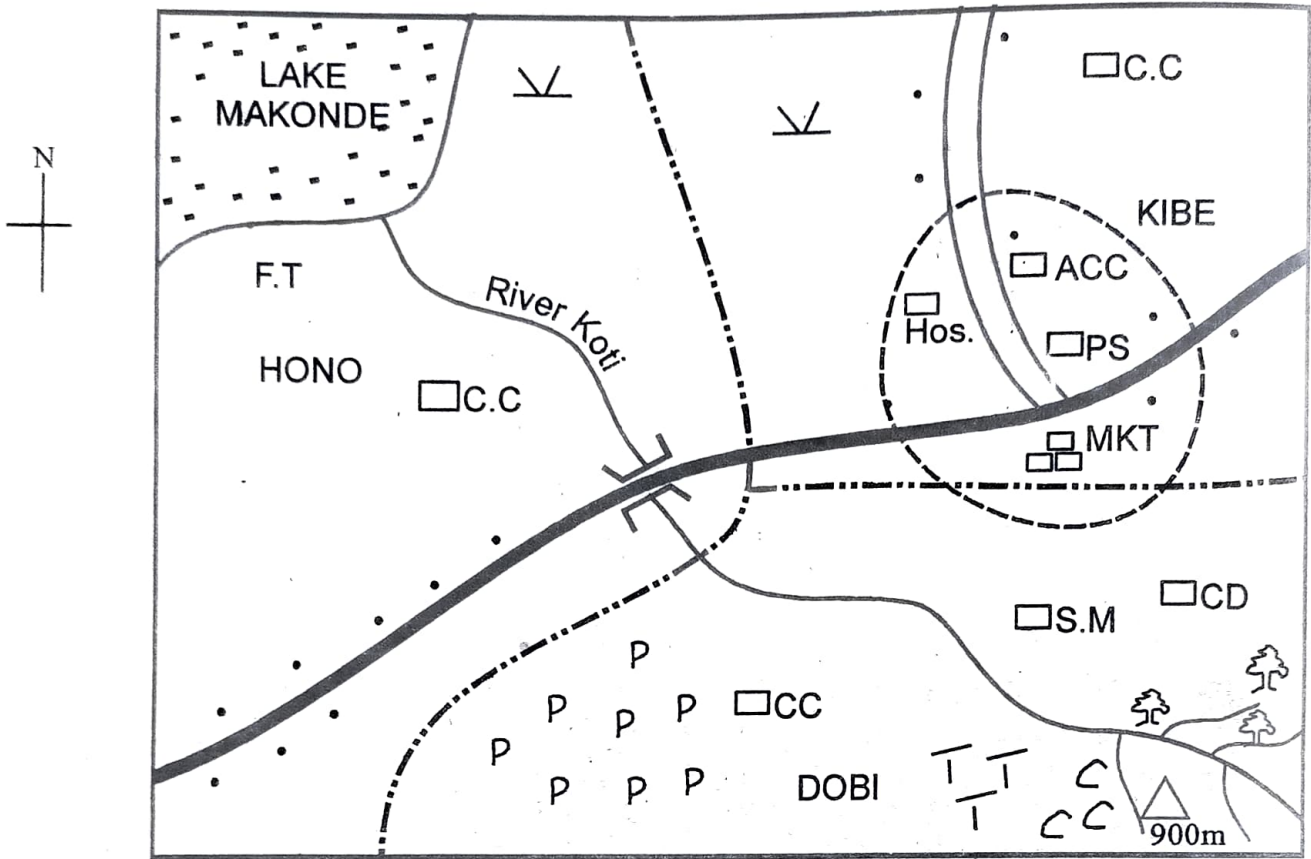
4. [A] [B] [C] [D] 14. [A] [B] [C] [D] 24. [A] [B] [C] [D] 34. [A] [B] [C] [D]

In the set boxes numbered 34, the box with letter D printed in it is marked.

11. Your dark line Must be within the box. Make your line as dark as possible.
12. For each question **Only One** box is to be marked in each set of four boxes.

This question papers consists of 10 printed pages.

KOTI AREA.



Key:-

	Tarmac road		School		Coffee		Cattle dip
	Murrum road		Police station		Tea		Fish trap
	River		Houses		Hill		Chief Camp
	Bridge		Forest		Hospital		Market
	Permanent buildings		Scrub		Borehole		Assistant county commissioner
	Pyrethrum		Locational boundary				Town boundary

Study the map of Koti area above and use it to answer questions 1-7.

1. The land in Koti area rises from
 - A. North East
 - B. South East
 - C. North West
 - D. South West

2. The settlement in Koti area is **mainly** influenced by
 - A. road junction
 - B. drainage
 - C. economic activities
 - D. infrastructure development.

3. The climate of the Southern part of Koti is **likely** to be
 - A. hot and wet
 - B. cool and moist
 - C. warm and moist
 - D. warm and cool

4. River Koti forms/which feature at lake Makonde
 - A. confluence
 - B. tributary
 - C. estuary
 - D. senile

5. What is the **main** reason why the Northern part of Koti area is sparsely populated?
 - A. Water flow
 - B. Favourite climate
 - C. Harsh climate
 - D. Fertile soil

6. Which one of the following human activities are not carried out in kotia area?
 - A. Mining
 - B. Lumbering
 - C. Transport
 - D. Crop farming

7. Hono is administered by
 - A. assistance county commissioner
 - B. Governor
 - C. Police
 - D. Chief

8. The following are ways in which people interact. Which one is **correctly** used by the youths in Kenya?
 - A. Messenger
 - B. What's up videos
 - C. Trade
 - D. Education

9. Which one of following groups consists of indigenous crops during the pre-colonial?

A. Pumpkin Yorghuts Tea	B. Arrow roots Yams Pumpkins
C. Tea flowers Puddy rice	D. Sorghum Millet Cocoa

10. Which one of the following statements correctly describes rotation of the earth?
 - A. Changes the position of the midday sun
 - B. The earth spins at an angle.
 - C. Causes a different lengths of day and nights
 - D. Causes solstice and equinox.

11. Which one of the following groups of mountains were formed as a result of rising process?
 - A. Akwapim and Ahaggar
 - B. Longonot and Ras Dashan
 - C. Great Kharas and Danakil alps
 - D. Pare and Marsabit.

12. The time in town Q $15^{\circ}W$ is 1:00pm. What will the time in town P $30^{\circ}E$?
 - A. 4.00am
 - B. 10.00pm
 - C. 4.00pm
 - D. 10.00am

13. Which one of the following is the **main** function of the community to the school?
 - A. Impart desired values to learners.
 - B. Provide land to the school.
 - C. Promote national unity.
 - D. Employ teachers in the school.

14. Many people in Kenya do not keep battery chicken **mainly** because they
 - A. are cheaper to keep
 - B. earn income
 - C. have better meat
 - D. labour intensive

15. Intestate succession is described as
 - A. well organized system through which inheritance is run
 - B. authority issued by court of law for the inheritance
 - C. statement given by a member of the family on how property will be inherited
 - D. form of succession where the deceased fails to write a will about the property.

16. Which one of the following political parties led South Africa to independence?
 - A. National Democratic party (NDP)
 - B. "Umkhonto we Sizwe. ((UWS)
 - C. Africa National Congress.(ANC)
 - D. South Africa people's Union(SAPU)

17. Which one of the following statements is **true** about tourists attraction in Kenya and Mauritius? Both are
 - A. Snow capped mountains
 - B. Hot springs and geysers
 - C. Warm sandy beaches
 - D. Major historical sites

18. The Fulani carry out pastoralism in Sahel region the area is
 - A. animals are used to pay dowry
 - B. provides enough space for the activity
 - C. receives low rainfall
 - D. they have enough grass for grazing

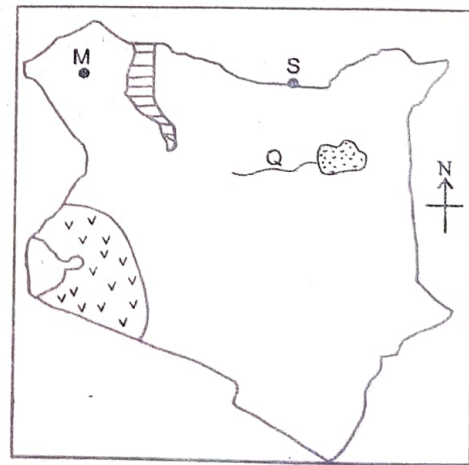
19. The following are factors to consider when establishing an industry. Which one is the **main** factor to consider when starting a leather tanning industry
 - A. availability of space
 - B. availability of water
 - C. availability of raw materials
 - D. availability of power.

20. The following statements describe a certain land mass in Africa
 - (i) Formed through eruption of molten materials
 - (ii) Located within a desert
 - (iii) Have a lake on top
 The feature described above is
 - A. Marsabit
 - B. Danakil alps
 - C. Longonot
 - D. Kilimanjaro

21. Which one of the following groups of communities consists of Southern cushites **only**?
 - A. Sanye Dahalo and Ogaden
 - B. Aramanik, Mbugu and Hadza
 - C. Dahalo, Boni and Oromo
 - D. Somali, Borana and Sanye

22. The dispersal land of Ngoni was
 - A. Shungwaya
 - B. Congo forest
 - C. Bar el Ghazal
 - D. Southern Africa

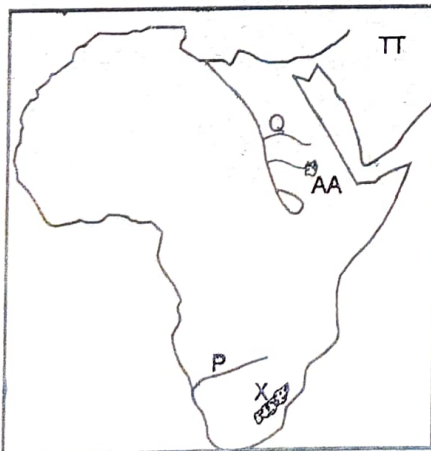
Use the map below and answer the questions below.



23. Which one of the following statements is **not** true about the region marked vvvv?
- The main economic activity in the region is fishing
 - The region experiences hot and moist climate
 - The region receives high rainfall
 - The main activity in the region is farming
24. The town marked S is likely to be
- Mandera
 - Moyale
 - Wajir
 - Garissa
25. The archeological site marked M
- Omo valley
 - Naikotome
 - Koobi Fora
 - Olduvai Gorge
26. The river marked Q is called
- Ewaso Nyiro South
 - Ewaso Nyiro North
 - River Mara
 - River Kerio
27. Which one of the following statements is **true** about population distribution in India?
- Majority of people live in towns
 - Most of the population is found in the highlands
 - The river valleys are densely populated
 - The lake region has sparse population.
28. Which of the following is the main fresh water fish harvested in cool lower Tana in Kenya?
- Tilapia
 - Black bass
 - Tuna
 - Trout
29. Which one of the following plants consists of marquis vegetation?
- Tall elephant grass
 - Tall evergreen grass
 - Esparto grass
 - Short thorny trees.
30. Below are some conditions that favour the growing of a certain crop.
- high temperature
 - high humidity
 - moderate rainfall
 - well drained soil
- The condition described above favour the growing of
- cloves
 - pyrethrum
 - tea
 - cotton
31. Which one of the following activities mainly threatens the existence of natural forests in Kenya?
- Collecting herbs for making medicine
 - Fire outbreak in the forest
 - Pests and diseases
 - Cleaning the forests for settlements
32. In traditional African societies an age-group was made up of people who
- belonged to the same clan
 - married at the same time
 - played together
 - came from the same village
33. The colonial system of administration applied in Mozambique was
- indirect rule
 - parternalism
 - direct rule
 - assimilation
34. The following statements describe characteristics of a relief region in kenya
- Low lying with an altitude of 0- 250m
 - Gently sloping land
- The region describe above is
- lake basin
 - lowlands
 - plateau
 - the rift valley

35. Which one of the following is an economic right?
- Right to life
 - Right to marry
 - Right to employment
 - Right to education
36. One objective of the organization of Africa union (OAU) was to
- execute plans to eradicate HIV/AIDS
 - abolish slave trade
 - form peace keeping force
 - promote economic development among members.
37. Which one of the following methods is used to extract gold in South Africa?
- Drilling
 - Shaft
 - Dredging
 - Quarrying
38. The conference that was chaired by Otto Von Bismark in Germany was conducted **mainly** to
- divide African among the Europeans power
 - establish market for their manufactured goods
 - protect the trading companies
 - promote mission works in Africa
39. The main benefit of horticultural family in Kenya is mainly to
- provide employment opportunities
 - promote development of towns
 - ensure self- sufficiency in food
 - earn the county foreign exchange.

Use the map below to answer questions 40-45.



40. The strait that separate Africa with the continent marked TT is
- Gibraltar
 - Penisula
 - Bab-el Mandeb
 - Suez canal
41. The land mass marked X is called
- cape ranges
 - Drankensberg
 - Atlas mountains
 - Table mountains
42. The river marked Q is called
- Nile
 - Blue Nile
 - White Nile
 - Atbara
43. The feature marked X was formed as a result of
- uplifting of the land
 - sinking of the land
 - accumulation of the sediments
 - erosion of less resistant materials
44. The river marked P has low volume of water **mainly** because of
- few deltas
 - high rate of evaporation
 - presence of rapid and waterfalls
 - human destruction
45. The lake marked AA is an example of
- corie lake
 - Depression
 - lava dammed lake
 - rift valley lake
46. Which one of the following is a cause of conflict in a society?
- Cultural differences
 - Partnership in referendum
 - Difference in opinion
 - Scarcity of resources

47. Which one of the following is the most likely cause of lawlessness in a society?
- Poor leadership
 - Tribalism
 - Illiteracy
 - Drug misuse
48. The settlement schemes in Kenya were established by the government of Kenya **mainly** to
- increase food production
 - to resettle those who lost their lands
 - promote peace in Kenya
 - promote economic development
49. Which one of the following factors **likely** to cause climate change in an area?
- Distance from the Equator
 - Amount of water vapour
 - Nearness to large water bodies
 - Setting up factories.
50. Which one of the following countries in Africa is not a member of economic community of West Africa states. (ECOWAS)
- Gambia
 - Cameroon
 - Nigeria
 - Ghana
51. Reuben bought a pencil. Later he found that two pencils had been packed. He returned the extra pencil to the shopkeeper. He showed
- obedience
 - love
 - honesty
 - justice.
52. Which one of the following is the **most** effective way of conserving forest in Kenya?
- Employing more guards
 - using alternative sources of energy
 - Recycling of papers
 - Controlling cutting of trees.
53. Which one of the following is true about tourism in Kenya?
- Most of the tourists come from Arabia
 - It is the leading foreign exchange earner
 - Main tourists attraction is coastal beaches
 - It enhances development of moral laws.
54. Which one of the following statements **best** explains why the Volta river project was established?
- Develop inland water ways
 - To resettle the landless people
 - Enhance electricity productivity
 - To establish a fishing area.
55. Which one of the following statements describes negotiation as a way of resolving conflicts in a society?
- Discussing the matter with one another
 - Asking for reconciliation
 - Litigation
 - Involving a third party
56. Which one of the following explains why citizens participate in civil electoral process in Kenya
- To obey the government laws
 - To elect their representatives to the government
 - To help their friends get positions
 - To be paid by the government

57. Pamela is physically handicapped. She is not allowed to play with his age mates in the field by her parents. Which one of the following freedom is she denied?
- Association
 - Worship
 - Movement
 - Expression
58. In Kenya, the speaker of the senate is
- elected by the IEBC
 - appointed by the president
 - elected by the members of the senate
 - elected by the workers of the senate
59. The bills of rights contains the
- power of the president
 - freedom of citizens in a state
 - parliamentary proceedings
 - court proceedings.
60. Who is the head of county executive committee?
- County speaker
 - County commissioner
 - Governor
 - Member of the county assembly.

SECTION B.

CHRISTIAN RELIGIOUS EDUCATION.

61. According to the first account of creation (Gen 1: 26 -8) woman was **mainly** created to
- help man name animals
 - taking care of the garden
 - procreation
 - companionship
62. Which one of the following was a sign of covenant between God and Moses?
- circumcisions
 - Rainbow
 - Ten commandments
 - Plagues

63. Abraham was seventy -five years when he was
- blessed with a son
 - married Sarah
 - called by God to leave Ur
 - called by God to leave Haran
64. During the covenant making ceremony between God and the Israelites, Moses sprinkled blood to the people and the other half to the alter in order to
- seal the covenant
 - cleanse the people
 - identify the people of God
 - memorise the ten commandments
65. When he was weaned, he was taken to the temple at Shiloh to be dedicated to God. His name is
- Gideon
 - Eli
 - Samuel
 - Saul
66. The spirit of the Lord left king Saul and he was tormented by an evil spirit. From this incident Christians learn to
- be humble
 - take care of God's people
 - follow God's instruction
 - kill evil people
67. Which one of the following prophets cursed some boys on his way to Bethel?
- Jeremiah
 - Elisha
 - Elijah
 - Amos

68. "A voice is heard in Ramah, Rachel is weeping for her children.." The words showed that
- A. Jesus would flee to Egypt
 - B. Jesus would suffer
 - C. John the baptist would preach to sinners
 - D. Baby boys below two years would be killed
69. Who had assured Simon the prophet that he would not die before he had seen the Messiah?
- A. Zechariah
 - B. The holy spirit
 - C. John the baptist
 - D. Angel Gabriel
70. Jesus sent two of his disciples to get a colt for him in preparation for
- A. the transfiguration
 - B. Passover feasts
 - C. triumphant entry into Jerusalem
 - D. the last supper
71. John the baptist baptised Jesus in the river Jordan because he
- A. wanted to obey his parents
 - B. wanted to fulfil the will of God
 - C. wanted to please people
 - D. had been requested by the Pharisees to do so.
72. Which one of the following miracles of Jesus teaches Christians the need to retain the word of God in their lives? The parable of the
- A. lost son
 - B. mustard seed
 - C. unforgiving servant
 - D. sower
73. Who among the following people assisted Jesus to carry his cross to the place of crucifixion?
- A. Simon of Cyrene
 - B. Simon Peter
 - C. Nicodemus
 - D. Joseph Arimathea
74. The main lesson Christians learn from the believers in the early church when they sold their possessions is that they should
- A. consult church leaders before using their money
 - B. live together in the church
 - C. not value material possessions
 - D. share their wealth with the needy
75. Which one of the following is the reason why the seven deacons were chosen in the early church? To
- A. oversee the distribution of funds
 - B. preach the gospel
 - C. baptise new believers
 - D. lead believers in church services.
76. The disciples were told to wait in Jerusalem by Jesus before his ascension in order to
- A. escape persecution
 - B. receive the holy spirit
 - C. preach the good news
 - D. continue praying and fasting
77. Jesus made himself known as the resurrected Lord to the two men at Emmaus when he
- A. broke the bread
 - B. showed them the scars
 - C. healed them
 - D. washed their feet
78. Ananias and Saphira sinned against God when they
- A. refused to take part in the prayer meeting
 - B. refused to become church leaders
 - C. failed to give all the money to the disciples
 - D. failed to welcome the disciples in their home

79. "Tabitha spent all her time being good and helping the poor" (Acts 9:36) what virtue did she demonstrate?
 A. Honesty
 B. Courage
 C. Tolerance
 D. Kindness
80. In traditional African communities the hair of a new born baby is shaved to
 A. show separation from the mother
 B. protect the baby from harm
 C. mark new beginning
 D. identify the baby with the clan
81. The **main** reason why Christians pay taxes to the government is to
 A. avoid punishment from leaders
 B. show their social status
 C. enable them to get services
 D. give their wealth to others
82. In some traditional African communities people are reconciled with the ancestors through
 A. naming of children
 B. protecting the aged
 C. paying of dowry
 D. drinking beer
83. The **main** reason why sex before marriage is discouraged in both Christianity and traditional African communities is because it
 A. encourages prostitution
 B. can lead to diseases
 C. is considered unholy
 D. can lead to unwanted children
84. Your classmate Bismarck tells you he has been taking money from parents without their permission. As a Christian what action would you take
 A. announce it to the classmates
 B. avoid talking to him
 C. report the matter to the parent
 D. tell him the danger of such a habit.
85. You have been asked by your headteacher to plan for an activity for young people. What is the best leisure activity for them?
 A. Reading competition
 B. Playing games
 C. Debate competition
 D. Cleaning the community market.
86. Esther your deskmate is suffering from HIV/AIDS and misses school because other classmates laugh at her. As a Christian you should
 A. encourage her to concentrate on her studies
 B. encourage her to transfer to another school
 C. tell her to stay at home
 D. tell your parents about her
87. Which one of the following was an achievement of king David?
 A. Writing the last books of the Bible
 B. Bringing the ark of covenant to Jerusalem
 C. Fighting against idol worship in Israel
 D. Judging cases in Israel wisely
88. The **main** reason why Peter denied Jesus is because he
 A. was afraid of the crowd
 B. lacked faith in Him
 C. was shocked by the events
 D. was disappointed with his actions.
89. The **best** way to spend leisure after a church service is by
 A. visiting classmates
 B. helping in house chores
 C. listening to Christian music
 D. watching a movie.
90. The virtue of self control is **best** shown by Christians when they
 A. honour those in authority
 B. tolerate those who mistreat them
 C. obey the rules of the society
 D. care for the sick