

# AIM PRESS EXAM SERIES

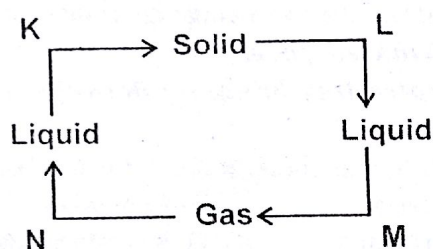


# 8

## STANDARD EIGHT - YEAR 2021 SCIENCE

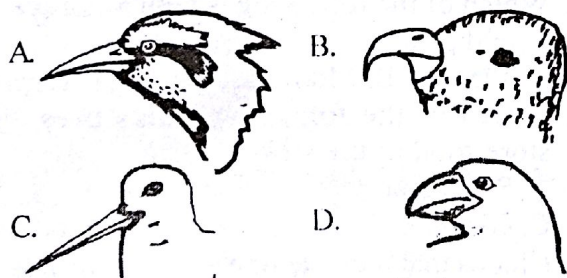
Time : 1 Hr. 40 Min

- Where does digestion of maize start during digestion?
  - Mouth
  - Stomach
  - Small intestine
  - Colon
- The diagram below represents processes K, L, M and N which brings about changes of state of matter.



Which two processes require an increase in temperature?

- K and L
  - K and N
  - M and N
  - L and M
- Which of the following is the **CORRECT** flow of blood throughout the circulation system starting from the lungs?
    - Lungs → pulmonary vein → pulmonary artery → venacava → aorta
    - Lungs → pulmonary vein → aorta → pulmonary artery → venacava
    - Lungs → pulmonary vein → aorta → venacava → pulmonary artery
    - Lungs → pulmonary artery → venacava → aorta → pulmonary vein
  - Which of the beaks below is adapted to feed on the same food as the hawk?



- The two main components of urine are
  - water and salt
  - water and carbon dioxide
  - water and urea
  - salt and urea

- Study the food chain and answer the question.

**Grains → Rat → Snakes → Hawks**

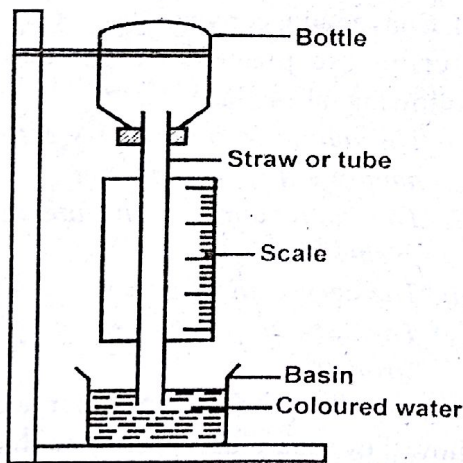
What would happen if all the snakes were killed?

- The hawks would start eating grains
  - The number of hawks would increase
  - The number of rats would increase
  - There would be an increase in the amount of grains
- Which of the liquids are miscible?
    - Oil and water
    - Water and spirit
    - Kerosene and spirit
    - Water and paraffin
  - A woman is seated by the fire warming her hands and feet. How does the heat reach her feet and hands respectively?
    - Radiation, convection
    - Convection, conduction
    - Convection, radiation
    - Convection, convection
  - During the process of parturition, the following takes place.
    - The amniotic bag bursts allowing the amniotic fluid to flow out.
    - The contraction of the uterus muscles pushes the baby.
    - The cervix dilates.
    - The labour pains become faster and stronger.

Arrange the processes in order according to how they took place starting with the first to the last.

- iv, iii, i, ii
  - iii, i, iv, ii
  - iv, iii, ii, i
  - i, iv, iii, ii
- Which pair of levers is the arrangement of the positions: Load, Fulcrum and Effort the same?
    - Crowbar and wheelbarrow
    - Spade and wheelbarrow
    - Claw hammer and spade
    - Crowbar and claw hammer

11. Which of the following does **NOT** affect floating and sinking?
  - A. Type of material
  - B. Weight
  - C. Shape
  - D. Size
12. Food poisoning can be as a result of .....
  - A. poor cooking
  - B. overcooking
  - C. poor food storage
  - D. too much use of salt
13. When comparing the rates at which different soils lose water, it is important that all the following factors should be kept constant **EXCEPT** .....
  - A. amount of water
  - B. amount of cotton wool
  - C. type of soil
  - D. size of funnels
14. Which of the following describes a method of conserving water by recycling?
  - A. Using drip irrigation
  - B. Getting clean water from dirty water
  - C. Washing toilets using water used for rinsing clothes
  - D. Using gutters to harvest water from roofs
15. Below is an illustration of a weather instrument made by Mr. Bobo and his standard five pupil.

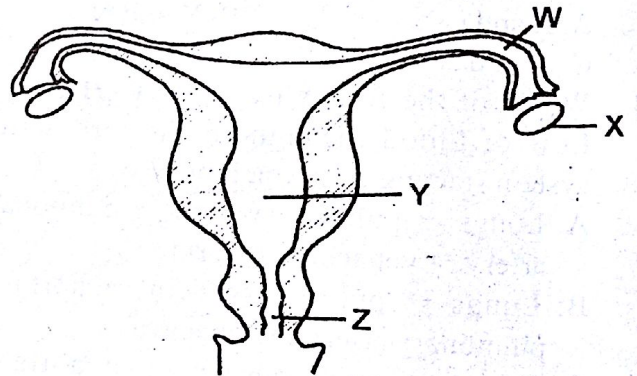


Which of the following principles behind its working is **INCORRECT**?

- A. When the temperature is high the level of water in the basin drops
- B. When the temperature is high the level of water in the straw comes down
- C. When the temperature is low the level of water in the straw rises
- D. The scale reads from top to bottom

16. The table below shows excretory system. Which of the following is **CORRECTLY** matched?
 

A. Lungs	→ Carbon dioxide and urea
B. Kidney	→ Carbon dioxide and water
C. Skin	→ Lactic acids and excess salts
D. Lungs	→ Water and salt
17. Which of the following diseases are immunized against at the age of birth and two and half months respectively?
  - A. Tuberculosis and Measles
  - B. Yellow fever and Tetanus
  - C. Measles and Polio
  - D. Polio and Whooping cough
18. A child had the following signs and symptoms.
  - i) *Wrinkled face.*
  - ii) *Protruding bones on the skin.*
  - iii) *Weak.*
 The child was likely to be suffering from \_\_\_\_
  - A. Malaria
  - B. Anaemia
  - C. Marasmus
  - D. Kwashiorkor
19. The diagram below shows female reproductive system.

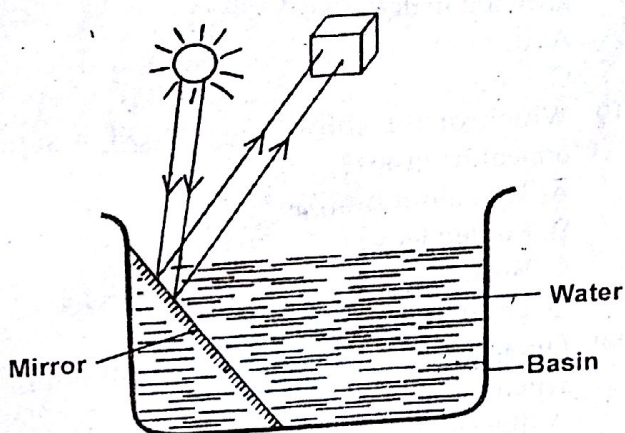


Name the parts Y, W, Z respectively.

- A. Ovary, uterus, cervix
  - B. Womb, fallopian tube, vagina
  - C. Vagina, uterus, ovary
  - D. Ovary, uterus, cervix
20. Which of the following is both a storage and a field pest?
    - A. Weevil
    - B. Moth
    - C. Aphid
    - D. Termite
  21. Which of the following plants does **NOT** store food in the stem?
 

A. Sugarcane	B. Onions
C. Ginger	D. Irish potatoes
  22. Clouds that indicate fine weather are also .....
    - A. dark grey in colour
    - B. found low in the sky
    - C. having irregular shape
    - D. flat at the base

23. Which of the following explains the reason why handles of cooking utensils are made using wood?
- To make them last longer
  - To make them more attractive
  - To insulate them against heat
  - To enable them conserve heat
24. Which of the following is **NOT** a proper use of medicine?
- Taking only the prescribed medicine
  - Using medicine for recommended reasons only
  - Sharing medicine with your brother
  - Taking the right dosage
25. Which of the following pairs shows living and non-living components of environment respectively?
- Water and plants
  - Soil and air
  - Mushroom and soil
  - Soil and animals
26. The quantity of matter in a substance is measured using an instrument called a \_\_\_\_\_
- beam balance
  - rain gauge
  - spring balance
  - newtons
27. Which of the following groups consists of materials that are all non-magnetic?
- Iron, office pins, rubber
  - Plastics, alnico, brass
  - Wood, stones, cobalt
  - Aluminium, brass, gold
28. The diagram below shows a certain experiment that was done by pupils to investigate a certain property of light.



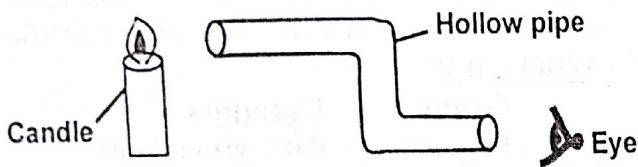
- The aspect of light being investigated was \_\_\_\_\_
- making a rainbow
  - how light travels
  - reflection of light
  - diffraction

29. Which of the following is **NOT** a source of current electricity?
- Water
  - Solar panel
  - Geothermal generator
  - Wind mill
30. Which of the following plants grows in wet areas?
- Euphorbia
  - Murram grass
  - Water lily
  - Maize
31. The table below shows how pupils in standard 4 classified crops. Which crops were classified **WRONGLY**?

Group	Examples
Legume	- Peas, groundnuts
Tubers	- Cassava, sugarcane
Fibres	- Sunflower, flax
Cereals	- Simsim, millet

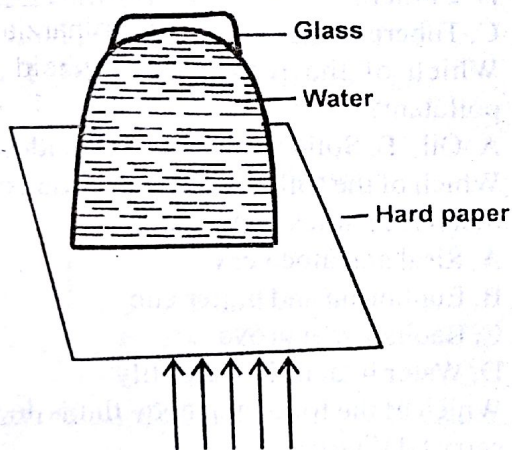
- Peas, cassava, flax
  - Sugarcane, sunflower, simsim
  - Simsim, sugarcane, flax
  - Groundnuts, peas, millet
32. Which animal is **NOT** matched with how it protects itself against its enemies?
- Chameleon → camouflage
  - Tortoise → withdrawing in the shell
  - Wasp → coiling
  - Housefly → flying away
33. The following are diseases spread through contaminated water. Which one is **NOT**?
- Cholera
  - Bilharzia
  - Tuberculosis
  - Typhoid
34. Which of the following is **NOT** a water pollutant?
- Oil
  - Solid wastes
  - Pesticides
  - Air
35. Which of the following shows group of plants that have a thick waxy cuticle?
- Sisal and aloe vera
  - Euphorbia and butter cup
  - Baobab, mangrove
  - Water hyacinth, water lily
36. Which of the following body fluids does **NOT** carry HIV virus?
- Vaginal fluid
  - Semen
  - Tears
  - Saliva
37. The following are signs and symptoms of Gonorrhoea. Which one is **NOT**?
- Pain when passing urine
  - Passing out a smelly discharge
  - Swelling on the tip of the penis
  - Sores appearing on the lips

38. Which of the following shows a list of drugs which are known as narcotic?
- Miraa, tobacco, alcohol
  - Cocaine, khat, mandrax
  - Mandrax, heroine, cocaine
  - Bhang, alcohol, tobacco
39. Std. 6 pupils carried out the activity shown below.



What property of light were the pupils investigating?

- Light can be reflected
  - Light travels in all direction
  - Light can be refracted
  - Light travels in a straight line
40. Which of the following does **NOT** show change of state?
- Ice changing to water
  - Heating iodine crystals
  - Crushing a piece of chalk
  - Cooling water vapour
41. Std. 5 pupils carried out the experiment shown below.



From the activity the pupils concluded that \_\_\_\_\_

- air exerts pressure
  - matter occupies space
  - liquid exerts pressure
  - air occupies space
42. Which of the following components of air makes 0.03% of air by volume?
- Carbon dioxide
  - Rare gases
  - Oxygen
  - Nitrogen

43. Which of these animal feeds is a source of proteins?
- Nappier grass
  - Salt lick
  - Lucerne
  - Star grass
44. Which one is **NOT** a source of light?
- Firefly
  - Sun
  - Moon
  - Torch
45. The purpose of salt in food preservation is to \_\_\_\_\_
- remove water
  - add flavour
  - remove air
  - lower temperature
46. Ann was bitten by a poisonous snake during a sunny day. Which chamber of the heart received the poison first?
- Right auricle
  - Left auricle
  - Right ventricle
  - Left ventricle
47. Name the furthest planet from the sun.
- Neptune
  - Earth
  - Mercury
  - Mars
48. The following are adaptations of plants to their environment.
- Leaves fold up.
  - Shoots are leafy.
  - Leaves have a hairy upper surface.
  - Leaves are swollen.
  - Leaves have sunken pits.
- Which of these adaptations are for plants growing in dry areas?
- ii, iii, iv
  - i, ii, iii
  - i, ii, v
  - iii, iv, v
49. Which of the following is **NOT** a sign of unhealthy crops?
- Discolouration on roots
  - Folded leaves
  - Brown apexes
  - Dropping leaves
50. On a see-saw a small boy can lift a big boy when \_\_\_\_\_
- the small boy stands on it
  - the big boy moves closer to the fulcrum
  - the two boys move equal distances away from the fulcrum
  - the small boy moves closer to the fulcrum