

NAME _____ ADM No _____

CLASS _____ Candidate's Signature _____

DATE _____

443/2

Agriculture

Paper 2

Time: 2 Hours

**ASUMBI GIRLS HIGH SCHOOL
TERM 2 - DECEMBER 2021
FORM 4 – AGRICULTURE PAPER 2**

INSTRUCTIONS TO CANDIDATES

- (a) Write your name, Admission number and date in the spaces provided.
 (b) This paper consists of three sections; A, B and C.
 (c) Answer **All** questions in Section A and B in the spaces provided.
 (d) Answer any **two** questions in Section C in the spaces provided.

For Examiners use only.

SECTION	QUESTION	MAXIMUM SCORE	CANDIDATE'S SCORE
A	1-17	30	
B	18-22	20	
C		20	
		20	
		20	
TOTAL		90	

SECTION A

1. Name **four** dairy breeds of goats. (2 mks)

.....

.....

.....

.....

2. Outline **two** control measures of roundworm. (1 mk)

.....

.....

3. State **four** maintenance practice carried on a wheelbarrow. (2 mks)

.....

.....

.....

.....



4. Give **three** ways of transmitting livestock diseases. (1 ½ mks)

.....

.....

.....

5. State the appropriate use of each of the following farm tool. (1 mk)

i) Stock and die

.....

ii) Oil stone (1 mk)

.....

6. Distinguish between zoonotic disease and a notifiable disease. (2 mks)

.....
.....

7. State **four** reasons for keeping livestock healthy. (2 mks)

.....
.....
.....

8. a) What is the intermediate host for liverfluke. (1 mk)

.....

b) What is the duration of oestrus cycle in a cow. (1 mk)

.....

9. State **two** advantages of upgrading cattle. (2 mks)

.....
.....

10. Give the functions of the following parts of a reciprocating mower.
a) swath stick (½ mk)

.....

b) Shoe (½ mk)

.....

c) Cutter bar (½ mk)

.....

11. Give **two** functions of the albumen in an egg. (2 mks)

.....
.....

12. State **four** qualities of good wool. (2 mks)

.....

.....

.....

.....

13. Give **two** reasons why honey harvesting is discouraged at night. (2 mks)

.....

.....

14. Which hormone stimulates milk let down? (1 mk)

.....

15. Give **two** qualities of a creep feed. (2 mks)

.....

.....

16. State **two** reasons for seasoning timber before use in construction. (2 mks)

.....

.....

17. Name the causal organisms of the following diseases.

a) Anthrax (½ mk)

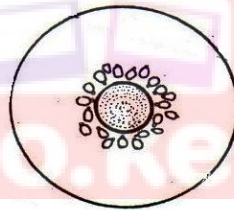
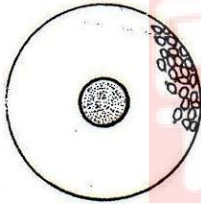
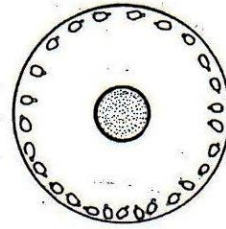
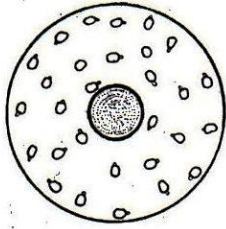
.....

b) Nagana (½ mk)

.....

SECTION B

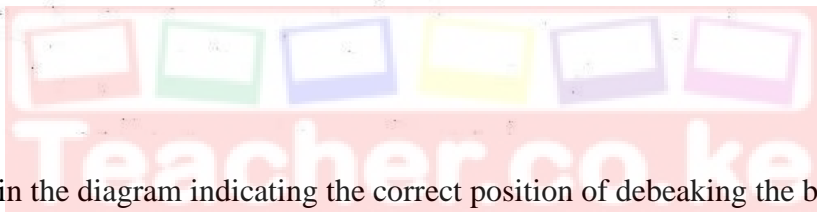
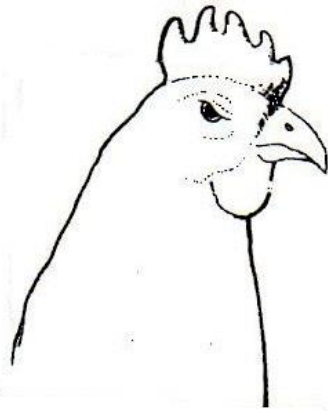
18. Study the diagram below carefully and answer the questions that follow.



Indicate below each diagram the conditions in the brooder.

(4 mks)

19. Study the diagram below and answer the questions



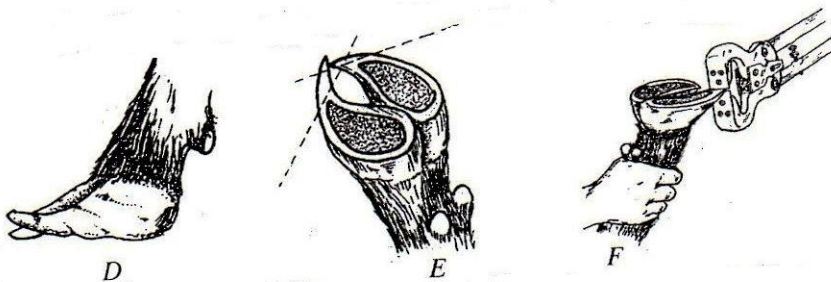
i) Draw a line in the diagram indicating the correct position of debeaking the birds. (1 mk)

ii) Give the reasons for debeaking birds. (2 mks)

.....

.....

20. Below are illustrations of animal hooves and an activity being done?



a) What activity is going on in the diagram F? (½ mk)

.....

b) Which of the above hooves is likely to predispose foot rot infections? (½ mk)

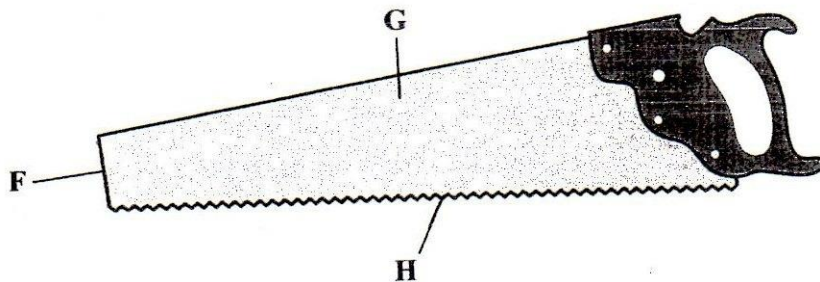
.....

c) Other than protecting animals from foot rot, give two other reasons for carrying out the above activity. (2 mks)

.....

.....

21. The following is an illustration of a handsaw. Study it carefully and answer the questions that follow.



a) Name the parts labelled.
F - (1 mk)

.....

G - (1 mk)

.....

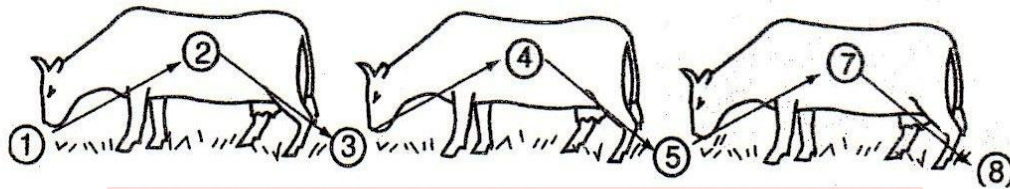
b) Explain **three** maintenance practices that should be carried out on the part labelled H. (3 mks)

.....

.....

.....

22. The illustrations below represent the different stages of development of a three host tick. Study it carefully and then answer the questions that follow.



a) Briefly explain what is happening in the following stages. (2 mks)

1 –

.....

4 –

.....

5 –

.....

7 –

.....

b) Why could it be difficult to control the above tick using acaricides? (1 mk)

.....

c) Name the most common sites the tick can be found on the body of an animal. (2 mks)

.....

.....





