



BRILLIANT PUBLISHERS

The Sign of Knowledge

SCIENCE

K.C.P.E FIRST TRIAL

ALT. A

STANDARD EIGHT 2020

Time: 1 hour 40 minutes

READ THESE INSTRUCTIONS CAREFULLY

1. You have been given this question booklet and separate answer sheet. This question booklet contains 50 questions.
2. Do any necessary rough work in this booklet.
3. When you have chosen your answer, mark it on the **ANSWER SHEET**, not in this question booklet.

HOW TO USE THE ANSWER SHEET

4. Use an ordinary pencil.
5. Make sure you have written on the answer sheet:
YOUR INDEX NUMBER
YOUR NAME
NAME OF YOUR SCHOOL
6. By drawing a **dark line** inside the correct numbered boxes mark your full Index Number (i.e. School Code Number and the three-figure Candidate's Number) in the grid near the top of the answer sheet.
7. Do not make any marks outside the boxes.
8. Keep your answer sheet as clean as possible and do not fold it.
9. For each of the questions 1- 50, four answers are given. The answers are lettered A, B, C and D. In each case only **ONE** of the four answers is correct. Choose the correct answer.
10. On the answer sheet the correct answer is to be shown by drawing a **dark line** inside the box in which the letter you have chosen is written.

Example

In the Question Booklet:

11. which one of the following components of blood is involved in clotting after injury?

- A. Plasma
- B. White blood cells
- C. Platelets
- D. Red blood cells

The correct answer is C

On the answer sheet:

1 A [B] [C] [D] [] **11** A [B] [C] [D] [] **21** A [B] [C] [D] []

In the set of boxes numbered 11, the box with the letter C printed is marked.

11. Your **dark line** **MUST** be within the box.
12. For each question **ONLY ONE** box is to be marked in each boxes.

This question paper consists of 7 printed pages. Candidates should check the question paper to ensure that all the pages are printed as indicated and no questions are missing.

1. Which one of the following pairs of diseases is **correctly** matched with the time of immunization?

Six weeks

Nine months

- | | |
|---------------|--------------|
| A. Polio | tetanus |
| B. Measles | tuberculosis |
| C. Diphtheria | pertusis |
| D. pertusis | yellow fever |
2. Which one of the following components of blood is attacked by HIV?
- A. Red blood cells.
- B. White blood cells.
- C. Platelets.
- D. Plasma.
3. Which one of the following is a compound fertilizer?
- A. Mono Ammonium Phosphate
- B. Triple super phosphate
- C. Sulphate of Ammonia
- D. Muriate of potash
4. The importance of fibre in the human diet is to
- A. digestion of food
- B. absorption of nutrients
- C. absorption of water
- D. movement of food
5. It is true to say that all reptiles
- A. Are cold blooded invertebrates
- B. Lay fertilised eggs in water
- C. Have scales on their bodies
- D. Lay unfertilized eggs in sand

6. All the following are safety measures when handling current electricity. Which one is not?

- A. Do not touch switches with wet hands.
- B. Fitting lightning arrestors on tall buildings.
- C. Do not overload sockets.
- D. Do not insert sticks, wires and other materials in sockets.

7. The rate at which water drains in the soil is mainly determined by

- A. volume of the soil.
- B. size of the soil particles.
- C. humus content in the soil.
- D. air content in the soil.

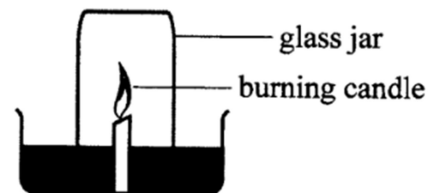
8. Which one of the following is a social effect of drug abuse?

- A. Addiction
- B. Truancy
- C. Withdrawal
- D. Fits

9. Which one of the following methods will mainly conserve soil moisture and add nutrients after rotting?

- A. strip cropping
- B. Terracing
- C. Mulching
- D. Gabions

10. Pupils set up an experiment as shown in the diagram below.

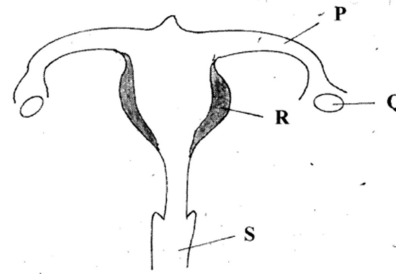


- Which one of the following was a correct observation from the experiment?
- Water level in the trough increased.
 - Candle flame brightened.
 - Water level in the glass jar increased.
 - Colour of the water changed.
11. A sample of soil was mixed with water in a transparent container, shaken and then allowed to settle. This was to investigate
- Drainage
 - Capillarity
 - Composition
 - Fertility
12. The following are signs and symptoms of certain diseases:
- fever.*
 - severe headache.*
 - violent diarrhoea*
 - severe dehydration.*
 - vomiting.*
- Which are for cholera?
- (i) and (ii).
 - (ii) and (iii).
 - (iii) and (iv).
 - none
13. The commonly abused drug in Kenya is?
- Tobacco
 - Glue
 - Alcohol
 - Khat
14. The following are misconceptions about HIV/AIDS except?
- HIV and AIDS is a curse.
 - Sex with a young girl cures HIV and AIDS
 - All thin people have AIDS.
 - HIV and AIDS has no cure
15. The following are processes that take place in fertilization of plants
- Germination of pollen tube*
 - Pollination*
 - Fusion*
 - Pollen tube breaks*
- The process that is second is?
- Pollination
 - Fusion
 - Pollen tube breaks
 - Germination of pollen tube
16. Below is an illustration of a food chain.
- Plant → Antelope → Lion → Vulture***
- Primary consumers are represented by
- plants.
 - antelope.
 - lion.
 - vulture.
17. While breathing in, the
- Diaphragm flattens
 - Volume of the chest decreases
 - Diaphragm become dome shaped
 - Lungs contract
18. Which one of the following occurs in both adolescence boys and girls.
- Production of sex cells
 - Hips broaden.
 - Voice breaks.
 - Enlargement of breasts.
19. When the tail of the a windvane points to the East, the wind must be blowing from?
- East to west

- B. West to east
- C. North to south
- D. South to North
20. Which one of the following characteristics can be used to identify molars?
- A. one root and chisel shape .
- B. cusps and ridges
- C. one root and cusps
- D. ridges and chisel shape.
21. The following can be separated using a magnet except.
- A. Iron fillings and office pins
- B. Staple pins and sand
- C. Iron fillings and flour
- D. Iron fillings and copper pieces
22. Which property of clay soil lead to flooding in a flat land?
- A. Stickness
- B. Fine texture
- C. Poor drainage
- D. High capillarity
23. Sound moves slowest in ?
- A. Solids
- B. Vacuum
- C. Liquids
- D. Gases
24. Carbon dioxide during blood circulation is removed from the blood stream in the.
- A. Lungs
- B. Left ventricle

- C. Right auricle
- D. Aorta

The diagram below represents a female reproductive system use it to answer question 25 and 26.



25. Which one of the parts labelled p,q,r and s is correctly matched to its function

| | Part | Function |
|----|------|------------------------|
| A. | Q | site for fertilization |
| B. | R | site for implantation |
| C. | S | egg formation |
| D. | R | ovulation |

26. Which part does fertilization take place

| | |
|------|------|
| A. Q | B. R |
| C. S | D. P |

27. Which pair of materials below float because of material they are made of?

- A. Sulfur and bottle
- B. Plasticine and wood
- C. Wood and wax
- D. Wax and sulfur

28. The best procedure of separating mixture of salt ,maize flour,and maize husks is;

- A. Filtering-sieving-evaporating.
- B. Dissolving- filtering-sieving-evaporating.
- C. Winnowing-dissolving-filtering-evaporating

- D. Sieving-dissolving-filtering-
evaporating
29. The following are methods of
maintaining simple tools:
- (i) **Cleaning after use**
(ii) **Proper storage**
(iii) **Sharpening cutting edges**
(iv) **Proper use of tools.**
- Which pair consists only of methods for
safety from accidents?
- A. (ii) and (iv). B. (i) and (iv).
C. (ii) and (iii). D. (i) and (iii).
30. When a force equal to the force of a
moving object is applied in the opposite
direction,the moving object will
- A. Continue moving
B. Move backwards
C. Stop
D. Decrease the speed
31. Which property of light leads to the
formation of a shadow
- A. Dispersion of light
B. Light travels in a straight line
C. Reflection of light
D. Refraction of light
32. A component of air used for
germination is also required for
- A. Burning substances.
B. Preserving soft drinks.
C. Making proteins.
D. Making electric bulbs.
33. Which one of the following has definite
shape,size and mass
- A. Clay, water, nitrogen
B. Glue,toothpaste,spirit

- C. Stone,oil,water vapour
D. Flour,chalkdust,cement
34. Which of the following organs in the
human body both produce sex cells?
- A. Testis and penis
B. Ovary and uterus
C. Ovary and testis
D. Penis and vagina
35. Which one of the following parts of a
passion plant is modified to climbing
- A. Branch B. stem
C. leaves D. Bud
36. Which one of the following consists of
foods that are mainly for body
building?
- A. beef, cassava, potatoes.
B. mutton, maize, pawpaw.
C. peas, beans, eggs.
D. carrots, bananas, tomatoes.
37. Which one of the following is a storage
pest
- A. Aphid B. white ant
C. cutworm D. Weaverbird
38. Which of the plants has root nodules
- A. Maize and potatoes
B. cabbages and millet
C. Groundnuts and and peas
D. Tomatoes and beans
39. Which one of the following
components of blood is correctly
matched with its function?
- | Blood component | Function |
|------------------------|-------------------|
| A. Red blood cells | clotting of blood |

- B. White blood cells transport oxygen.
- C. Platelets fight germs.
- D. Plasma transport food.

40. Which one of the following is advisable when spraying chemicals
- A. Spraying when the temperatures are high
 - B. Wearing a gas mask when spraying
 - C. spraying against the direction of wind
 - D. Wash hands before spraying

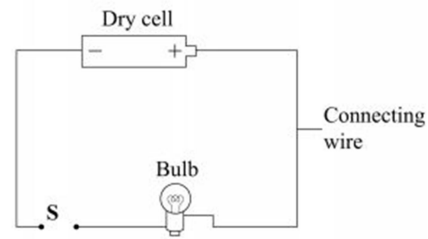
41. The method of grazing that would require the largest piece of land to practice is
- A. herding
 - B. stall feeding
 - C. tethering
 - D. paddocking.

42. The following are reasons for placing a tap near the bottom of a tank except.
- A. To let all water out.
 - B. increase pressure
 - C. making water flow faster
 - D. Making gravitational force act on water

43. Which one of the following statements is not true about commercial feeds?
- A. some are given as the only feeds
 - B. are mainly given to increase production
 - C. they are mainly given for protection against diseases
 - D. some are given together with other feeds

44. Which one of the following is a safety measure against lightning when it is raining?
- A. Leaning against walls.
 - B. Walking on open areas.
 - C. Wearing rubber shoes.
 - D. Using an umbrella.

45. The diagram below represents a set up that can be used to investigate good and poor conductors of electricity?



Which one of the following materials when used to connect wires at point S would make the bulb not light?

- A. Pencil.
 - B. Aluminium foil.
 - C. Steel wool.
 - D. Rubber band.
46. Cocaine and bhang share all the following except
- A. Causes depression
 - B. Causes hallucinations
 - C. Are all narcotics
 - D. Cause addiction
47. The reasons we are not able to see the stars during the day is
- A. they switch off during the day
 - B. the sun is too bright
 - C. they are never present in the sky
 - D. they do not produce their own light
48. The following are some characteristics of soil:
- (i) *fine particles.*
 - (ii) *cracks when dry.*
 - (iii) *poor drainage.*
 - (iv) *good capillarity.*

The characteristics are for

- A. loam soil

B. loam and sand soil

C. sand soil

D. clay soil.

49. Which one of the following soil conservation measures is best suitable on a nursery bed?

A. Terracing.

B. Mulching.

C. Tree planting. D. Contour farming.

50. A farmer practicing stall feeding is not **likely** to feed animals on

A. pasture and fodder

B. Pasture

C. fodder

D. concentrates