

K.C.P.E 2007 SCIENCE

1. Which one of the following is NOT CORRECTLY matched with its function?

Part	Function
A.Oesphagus	Passage of blood_____
B.Stomach	Mixes food with enzymes
C.Small intestine	Completes digestion of food
D.Large intestines	Absorbs digested food

2. Which one of the following is NOT A CORRECT statement about reproduction in human beings?

- A .Fertilization takes place in the uterus
- B. The zygote gets implanted in the wall of the uterus
- C. The blood of the mother and foetus do not mix
- D. Menstruation stops during pregnancy

3. The blood vessel through which deoxygenated blood flows to the heart is the

- A. aorta
- B Pulmonary artery
- C. vena cava
- D. pulmonary vein

4. Which one of the following changes takes place during adolescents in boys only?

- A .Fast body growth
- B. Growth of pubic hair
- C. Chest and shoulders become broader
- D. Releasing of sex cells

5. Which one of the following statements is TRUE about HIV and AIDS?

- A. All HIV positive people have AIDS
- B. During the window stage a person may test negative
- C. It can be transmitted by sharing utensils

D .It is not spread during the asymptomatic phase

6. Which one of the following is NOT a communicable disease?

- A. Whooping cough
- B .Tetanus
- C. Tuberculosis
- D Measles

7. A child suffering from kwashiorkor should be given a diet rich in

- A. Carbohydrates
- B. Fats
- C .Vitamins
- D .Proteins

8 .Wearing protective clothing while walking in stagnant water can prevent one from contracting

- A. bilharzias
- B. typhoid
- C typhoid and cholera
- D .bilharzias and cholera

9 Which one of the following statements is CORRECT according to immunization schedule of infants?

- A .The first dose of polio is given at eight weeks
- B.DPT vaccine is given at birth and at ten weeks
- C.DPT and measles vaccines are given at fourteen weeks
- D. Polio and BCG vaccines are given at birth

10. Planets appear bright because they
- A. reflect light
 - B. produce light
 - C. all twinkle
 - D. are large

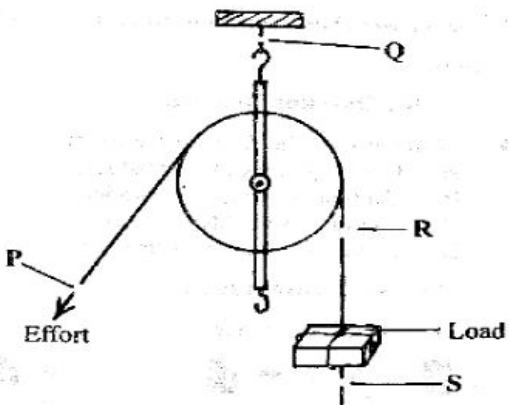
11. A pupil gave the following reasons as to why dairy cattle are given commercial feeds.

- (i) To increase milk production
- (ii) Given only to cattle under zero grazing
- (iii) To supplement other feeds
- (iv) Only when fodder crops and pasture are not available

Which two reasons are duplicated?

- A. (I) and (ii)
- B. (II) and (iv)
- C. (i) and (iv)
- D. (ii) and (iii)

12. The diagram below represents a set-up that is used to lift a load



To investigate the force required to lift the load a spring balance must be at

- A. P
- B. Q
- C. R
- D. S

13. The following are some methods of preserving foods

- (i) smoking
- (ii) drying
- (iii) freezing
- (iv) salting
- (v) canning

Which methods are traditional?

- A. (II), (IV) and (v)
- B. (II), (III) and (iv)
- C. (I), (III) and (iv)
- D. (I), (II) and (iv)

14. Which one of the following pairs of machines belongs to the same group as a ladder?

- A. Claw hammer and bottle opener
- B. Spade and fishing rod
- C. Staircase and a road winding uphill
- D. Handcart and wheelbarrow

15. The reason why an ordinary jiko without a clay lining is not recommended for use is because

- A. It pollutes the environment
- B. of the large amounts of charcoal used
- C. it takes a long time when cooking
- D. it gets too hot to hold

16. The following are liquids added together in glass bottles labeled P, Q, R and S by some pupils

- A. P - Kerosene and cooking oil
- B. Q - water and cooking oil
- C. R - milk and water
- D. S - milk and kerosene

Which glass bottle contains liquids that cannot be separated by decanting?

- A.P
- B.Q
- C.R
- D.S

17. Which one of the following plants is green and non-flowering?

- A. Mould
- B. Onion
- C. Sisal
- D. Moss

18. Which one of the following consists of a pair of storage pests?

- A. Rats and aphids
- B. White ants and rats
- C. Aphids and cutworms
- D. white ants and cutworms

19. Which one of the following is a possible food chain that could be found in a grassland inhabited by hawks, frogs, snakes, mice and grasshoppers?

- A. Grass → grasshopper's → frogs → snakes
- B. Grass → grasshopper's → frogs → mice
- C. Grass → snakes → mice → hawks
- D. Grass → grasshoppers → hawks → snakes

20. Which one of the following is TRUE for both chickens and frogs? Both

- A. Have a constant body temperature
- B. Have scales
- C. Breathe by lungs
- D. Feed on insects only

21. Which one of the following is NOT a rotational method of grazing?

- A. Paddocking
- B. Herding
- C. Tethering
- D Strip

22. Birds which feed on nectar have

- A. short pointed beaks
- B. strong curved beaks
- C. long slender pointed beaks
- D. long slender curved beaks

23. In which one of the following practices is water re-used?

- A. Using dirty water from the kitchen for watering plants
- B. Collecting rainwater from the roof for domestic use.
- C. Getting clean water from dirty water by boiling and cooling the steam
- D. Storing water in dams to be used in irrigation.

24. The texture of a soil type depends on the

- A. amount of water in the soil
- B. organic matter in the soil
- C. amount of mineral particles in the soil
- D. size of soil particles

25. The component that makes up 0-97% of air is used in

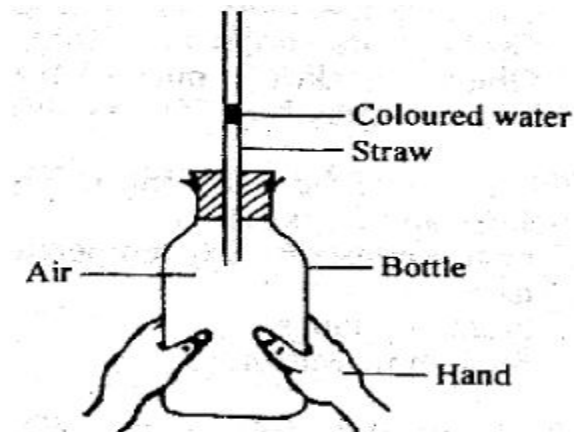
- A. rusting
- B. preservation of soft drinks
- C. electric bulbs
- D. making proteins

26. Which one of the following pairs of processes is as a result of increase in temperature?

- A. melting and evaporation

- B .condensation and freezing
- C. condensation and evaporation
- D. melting and freezing

27.The diagram below shows a set up that was used to demonstrate a certain property of matter



The coloured water rises up the straw because

- A. liquids expand when heated
- B .liquids occupy space
- C. air occupies space
- D. air expands when heated

28.A sufuria made up of steel weighing 1000g floats on water while a nail made of iron weighing 50g sinks

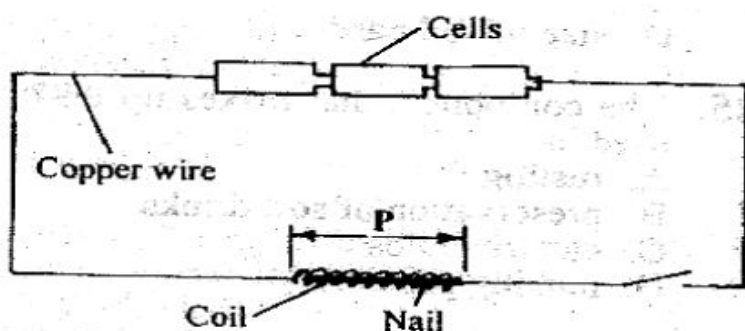
This is because of difference in

- A .type of material
- B. shape
- C. volume
- D. mass

29. Which of the following materials will NOT be required in an experiment to show that pressure in a liquid increases with depth?

- A. tin can
- B. water
- C. nail
- D. collecting jar

30. The diagram below represents a circuit that can be used to make a temporary magnet



The energy transformation that occurs at the section marked P is

- A. electrical → magnetic
- B. chemical → electrical
- C. heat → electricity
- D. chemical → magnetic

31. The following are forms of energy

- (i) Heat
- (ii) Electricity
- (iii) Light
- (iv) Sound

The two forms of energy that DO NOT require a medium of transmission are

- A. (ii) and (iv)
- B. (i) and (iii)
- C. (i) and (ii)
- D. (iii) and (iv)

32. The following practice help to conserve energy

- (i) using improved firewood jikos
- (ii) Switching off lights that use hydro electric power when not needed
- (iii) Using public transport whenever possible
- (iv) Using biogas for cooking

Which two practices conserve non-renewable sources of energy?

- A.(i) and (ii)
- B. (ii) and (iii)
- C.(ii) and (iv)
- D.(iii) and (iv)

33. Which of the following is a recommended practice to avoid being struck lighting?

- A. Sheltering under a tree.
- B .using an umbrella when in an open field
- C. sheltering while leaning on a wall.
- D. wearing rubber shoes with thick soles.

34. Which one of the following groups consists of foodstuffs that are used for body building and repair?

- A. Rice, oranges, meat
- B. wheat, fish, maize
- C. beans, potatoes, groundnuts
- D. eggs, peas, milk

35. The function of fibre in the human diet is to

- A. provide the body with nutrients
- B. transport digested food
- C. prevent constipation
- D. help in digestion of food

36 . Which one of the following statements is NOT TRUE about the force that opposes movement. The force

- A can be reduced by streamlining
- B. makes the load heavier
- C .increases effort required to move the load
- D. produces heat

37. A farmer noticed small and shallow channels forming in the soil in the garden due to running water. This type of soil erosion is called

- A .splash
- B .rill
- C .sheet
- D .gulley

38. Millet

- B .coffee
- C .sunflower
- D. peas

39. Which one of the following consists of a pair of plants that CANNOT make their own food?

- A. fern and pine
- B .Toadstools and moss
- C. puffballs and mould
- D. cedar and yeast

40. Which one of the following pairs of parasites can be controlled by spraying?

- A. ticks and fleas
- B liver flukes and tsetse flies
- C fleas and liver flukes
- D .ticks and tape worms

41. Which one of the following sources of electricity pollutes the environment?

- A. geothermal
- B. wind-driven generators
- C .hydro-electric generators
- D. petrol-driven generators

42. Which one of the following ways is a natural way of lighting a house? Using a

- A. candle
- B. Torch
- C. hurricane lamp
- D. transparent roof

43. Which one of the following components is found in all environments?

- A. plants
- B. soil
- C. air
- D. water

44. Which one of the following groups of methods can be used to separate solid mixtures only?

- A. sieving, picking, winnowing
- B. picking, use of magnet, decanting
- C. winnowing, sieving, filtration
- D. use of magnet, filtration, decanting

45. Which one of the following DOES NOT function the same way as a bicycle dynamo when used to produce electricity?

- A. hydroelectric energy
- B. car battery
- C. diesel generator
- D. wind driven turbines

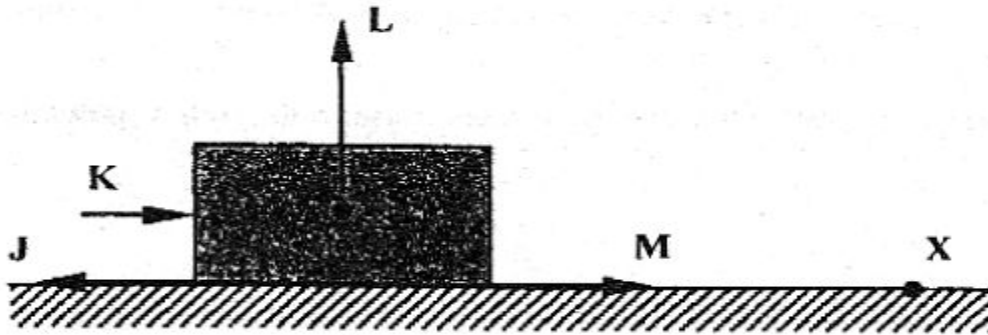
46. The diagram below represents a simple machine



Which one of the following positions labeled P, Q and R represent the load, effort and fulcrum when the machine is in use?

	Load	Effort	Fulcrum
A.	P	Q	R
B.	R	P	Q
C.	Q	P	R
D.	R	Q	P

47. The diagram below represents a block of wood being pushed along a surface towards point X. Which one



Which one of the arrows represents the direction of the force of friction?

48. Which one of the following consists of only materials that are ALL non magnetic?

- A. aluminium foil, a shilling coin
- B. iron, nails, staple pins
- C. metal scissor, steel wool
- D. piece of glass, sewing needle

49. The reason why coloured water is used in the construction of a liquid thermometer is to

- A .make it visible
- B. makes it expand faster
- C .make it absorbs more heat
- D. increase its density

50. Which one of the following is the largest planet?

- A. mercury
- B. Saturn
- C. Jupiter
- D .earth

EXPLANATION

KCPE ANSWERS

KCPE SCIENCE ANSWERS

	2005	2006	2007	2008	2009	2010	2011	2012	2013
1.			D						
2.			A						
3.			C						
4.			C						
5.			B						
6.			B						
7.			D						
8.			A						
9.			D						
10.			A						
11.			A						
12.			A						
13.			D						
14.			C						
15.			B						

16.			C						
17.			D						
18.			B						
19.			A						
20.			C						
21.			B						
22.			D						
23.			A						
24.			D						
25.			C						
26.			A						
27.			D						
28.			B						
29.			D						
30.			A						
31.			B						
32.			D						
33.			D						
34.			D						
35.			C						
36.			B						
37.			B						
38.			A						
39.			C						
40.			A						
41.			D						
42.			D						

43.			C						
44.			A						
45.			B						
46.			D						
47.			A						
48.			A						
49.			A						
50.			C						