

441/2

HOME SCIENCE

Paper 2

(Clothing Construction)
(Practical)

Mar. 2022 – 2½ hours



Instructions to candidates

- This paper consists of 4 printed pages.**
- Candidates should check the question paper to ascertain that all the pages are printed as indicated and that no questions are missing.**
- Candidates **must** use machine stitches appropriately in the construction of the garment.
- Hand stitches used **instead** of machine stitches will not be marked.
- Hand stitches will only be allowed for the making of hemming and tacking stitches.
- Candidates should answer the questions in English.**



A022



BOY'S SHIRT

A pattern of a boy's shirt is provided. You are advised to study the sketches, instructions and layout carefully before you begin the test.

MATERIALS PROVIDED

1. Pattern Pieces

- A. Shirt back
- B. Shirt front
- C. Sleeve
- D. Collar

2. Plain lightweight, light coloured cotton fabric 50 cm long and 90 cm wide.
3. Cotton sewing thread to match the fabric.
4. One large envelope.

THE TEST

Using the materials provided, lay, cut out and make **one side** of a boy's shirt to show the following processes:

- | | | |
|-----|-----------------------------------------------------------------------------------------------------------|------------|
| (a) | Cutting out; | (12 marks) |
| (b) | Working of the shoulder seam using a double stitched seam. | (8½ marks) |
| (c) | Working of the side seam using an open seam. | (12 marks) |
| (d) | Preparing and attaching the sleeve. Do not trim the armhole seam and do not finish the sleeve hem. | (14 marks) |
| (e) | Working of the front edge facing. | (6 marks) |
| (f) | Preparing and attaching the collar and finishing with even tacking stitches | (19 marks) |
| (g) | Finishing the lower shirt hem using machine stitching. | (13 marks) |
| (h) | Overall presentation. | (5½ marks) |



At the end of the examination, firmly sew onto your work, on a single fabric, a label bearing your name and index number. Remove the needle, pins and loose threads from your work. Fold your work neatly and place it in the envelope provided.

Do not put scraps of fabric in the envelope.

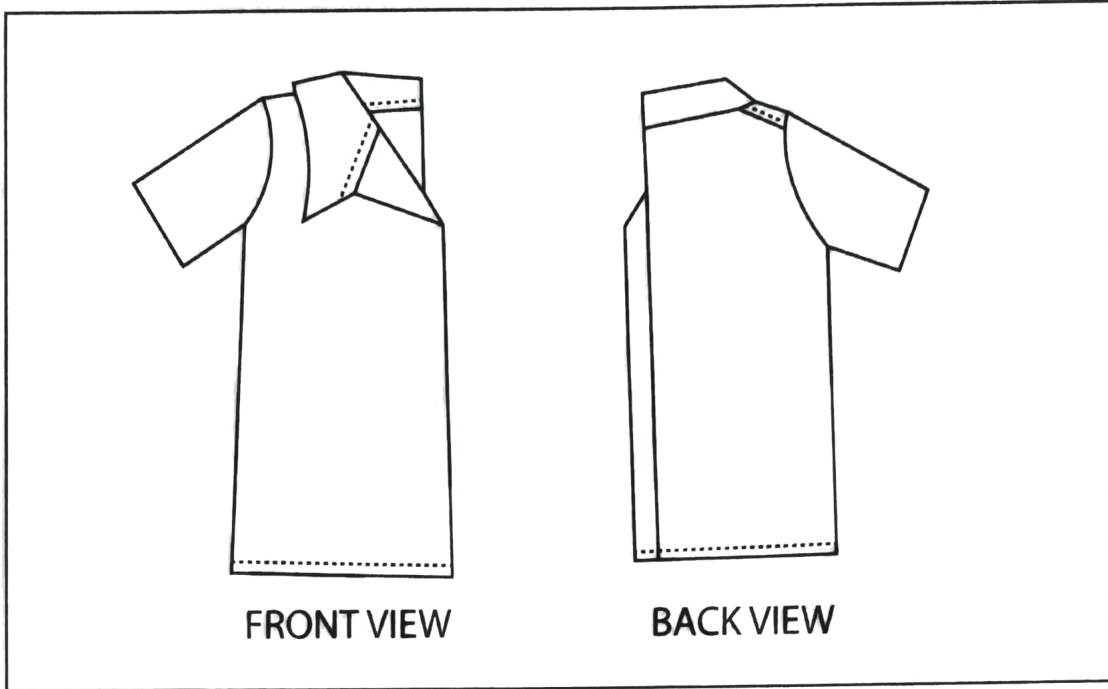
Do not seal the envelope.



A022



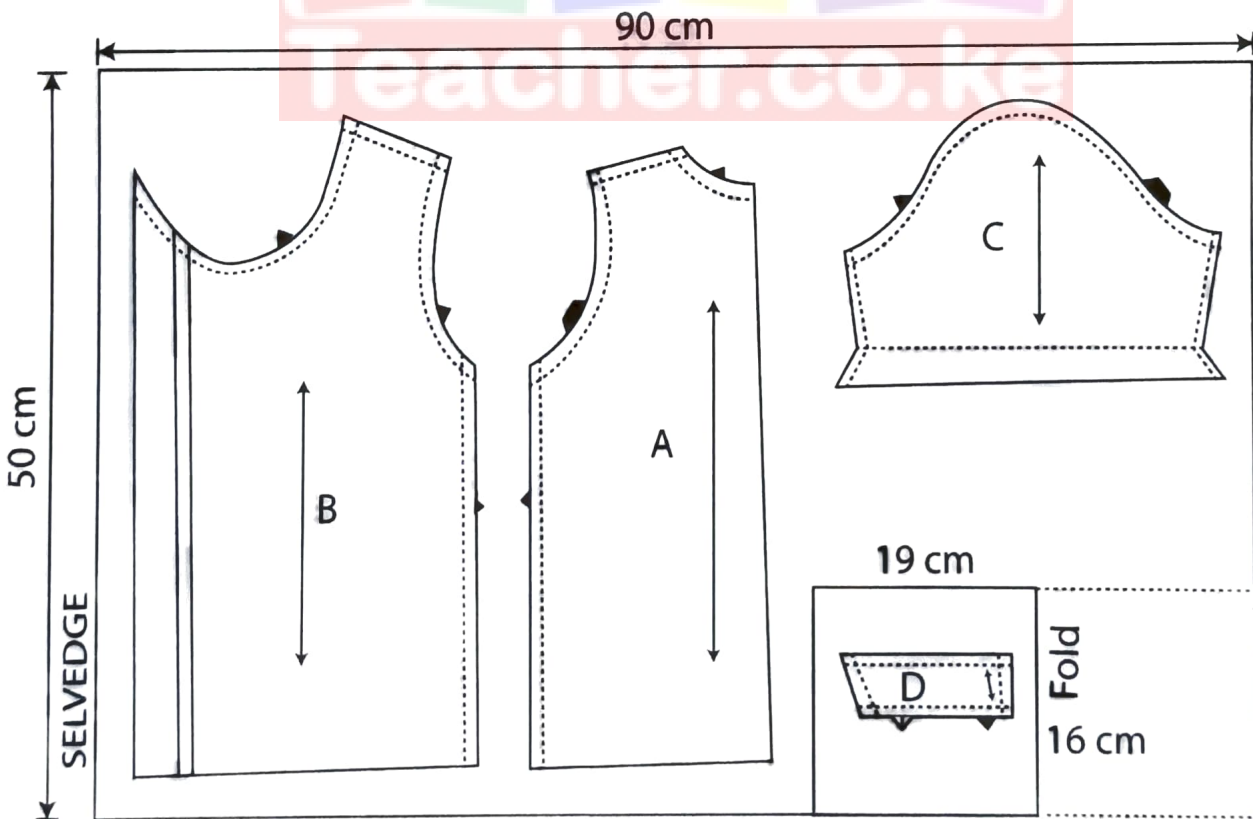
SHIRT VIEWS



FRONT VIEW

BACK VIEW

LAYOUT (NOT DRAWN TO SCALE)



373

A022

Download this and other FREE materials from <https://teacher.co.ke/notes>