



KEY INQUIRY QUESTIONS

May, 2022

SESSION OBJECTIVES



By the end of this session we should be able to;

- Identify features a good key inquiry question
- Form a key inquiry question for to be used during a lesson
- Identify the role of key inquiry question in teaching and learning

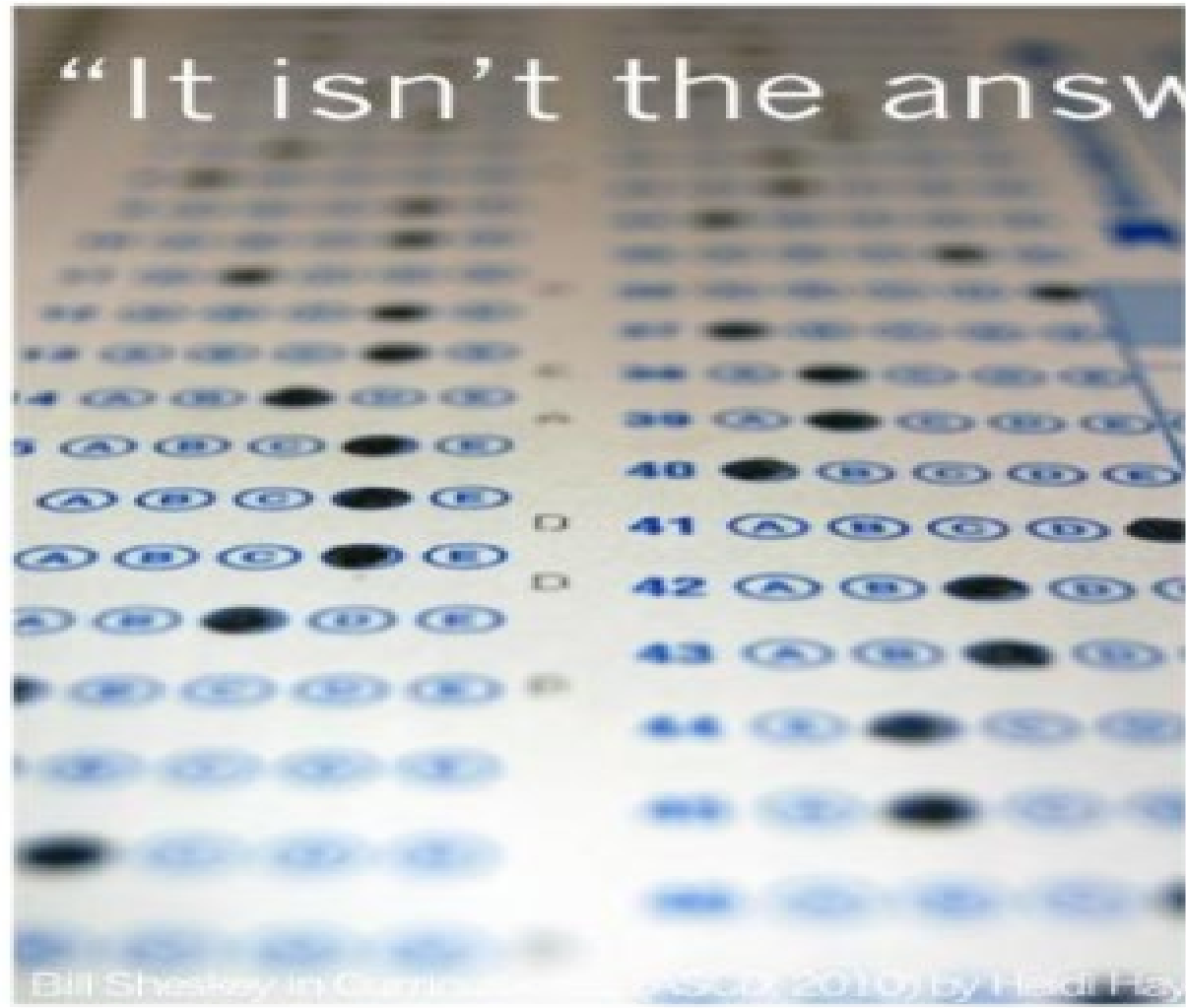


KWL

- 1. What *I know* about
- 2. What *I want to know* about



From answer to question.....



What is a question?



- www.menti.com
- Code

Types of questions



Brainstorm on the following nature of the questions and give one example in each case.

1. Closed-ended questions
2. Open-ended questions
3. Direct questions
4. Inquiry questions

What kind of questions are key Inquiry questions?

- These are questions that help to focus on learning.
- Questions that probe for deeper meaning and set the stage for further questioning
- Foster the development of critical thinking skills and higher order capabilities such as problem solving.

Feature of a good KIQ

- Should be open-ended, non-judgmental, meaningful and purposeful with an aim to allow learners to explore ideas.
- Is thought-provoking and intellectually engaging, often sparking discussion and debate.
- Encourages collaboration amongst learners, teachers, and the community.
- Call for higher-order thinking, such as analysis, inference, evaluation, prediction.
- It cannot be effectively answered by recall alone.
- **For a learning situation, it should address one or more concepts/learning outcomes.**

What a key inquiry question is not

1. It is **NOT** a direct question that can be answered with a yes or no.
2. It is **NOT** a question that can be answered without support.
3. It is **NOT** blurry/vague (undefined) questions.

Some questions teachers use which are not KIQ



- Isn't it?
- Are we together?
- Have you understood?
- Where did we stop?
- Who can remind us what we did yesterday?

Six typical question words used in KIQ



- How?
- Who?
- Where?
- When?
- What?
- Why?

always remember that a learning situation, KIQ should address one or more concepts/learning outcomes.



Example of KIQ in Integrated Science

• SLOs

By the end of the sub strand the learner should be able to:

- a) identify the components of Integrated Science as a field of study
- b) relate knowledge and skills gained in Integrated Science to career opportunities
- c) appreciate the importance of Integrated Science

• KIQ

How is the knowledge acquired in Integrated Science useful in daily life?

Example of KIQ in mathematics



By the end of the sub strand, the learner should be able to:

- a) work out profit and loss in real life situations
- b) calculate the percentage profit and loss in different situations
- c) calculate discount and percentage discount of different goods and services
- d) calculate commission and percentage commission in real life situations
- e) interpret bills at home
- f) identify mobile money services for different transactions
- g) work out mobile money transactions in real life situations

KIQ

1. Why do we use money in daily activities?

2. What considerations would we make when buying or selling?

3. What is involved in mobile money transactions?

Task. Group work



- In groups, pick a subject of your choice. Select one SLO and form at least one KIQ that you will use during teaching of the same in class.

Why do use KIQ in teaching and learning



The foundation for key inquiry question (KIQ) is Inquiry Based Learning/Education (IBL/E).

- Inquiry Based learning involves experiences that enable learners to develop understanding about aspects of the world around them through the development and use of investigative skills.

IBL incorporates a process of exploring the world, which leads to:

a) Asking questions

b) Making discoveries

c) Conducting research/ experiments

- Its philosophy is based on constructivist learning theories (Dewey, Piaget, Vygotsky) whereby humans construct knowledge and meaning from their experiences.



Self-Reflection

1. I learnt.....
 2. I need to learn more about.....
 3. How I will apply what I have learnt
- Suggestions I have for improvement of the session

Upload your responses on

<https://forms.office.com/r/7nHVcLMZrt>

Facilitators to use this link to View Responses:

<https://tinyurl.com/KWL-Facilitators>



The end

THANK YOU FOR YOUR TIME