

# LUBINU / LUSHEYA WARD

## EVALUATION STD 8 TERM 1 – 2020

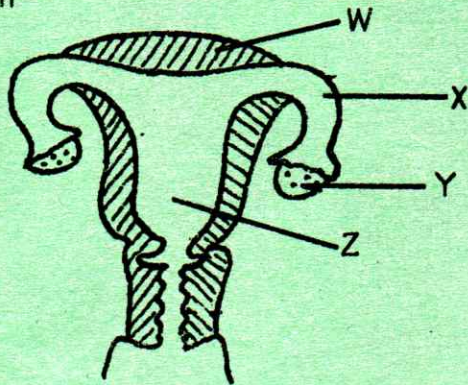
### HOW TO USE THE ANSWER SHEET

### SCIENCE

Time: 1 Hrs 40mins

1. Use only an ordinary pencil.
2. Make sure that you have written on the answer sheet:-
  - (i) YOUR NAME
  - (ii) YOUR REGISTER NUMBER
  - (iii) NAME OF YOUR SCHOOL
3. For each question show the correct answer by drawing a line in the brackets in which the letter you have chosen is written.

1. Which one of the following is TRUE about a canine tooth? It:
  - A. is chisel shaped
  - B. has two roots
  - C. is sharp and pointed
  - D. are 12 in number
2. Digestion of food takes place in the
  - A. Uterus
  - B. Rectum
  - C. Oesophagus
  - D. Duodenum
3. Below is a diagram of the female reproductive system



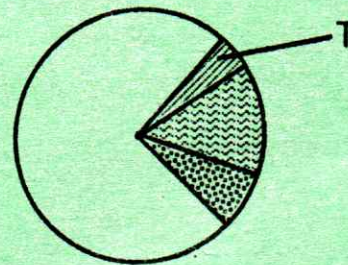
A zygote is formed in the part marked

- A. W
  - B. X
  - C. Y
  - D. Z
4. Which pair of blood vessels carry de-oxygenated blood only
    - A. Vena cava and pulmonary artery
    - B. Aorta and vena cava
    - C. Pulmonary vein and pulmonary artery
    - D. Pulmonary artery and Aorta
  5. Below are changes that take place in boys and girls during adolescence stage
    - (i) Shoulders broaden
    - (ii) Growth of beards
    - (iii) Menstrual flow starts
    - (iv) Wet dreams
    - (v) Deep voice

Which pair of changes takes place in boys only?

    - A. (iv) and (ii)
    - B. (iii) and (iv)
    - C. (iii) and (v)
    - D. (i) and (iii)
  - 6; Which one shows a balanced diet
    - A. Milk, pawpaw, sukuma wiki
    - B. Green maize, eggs, melon
    - C. Vegetables, ugali, chips
    - D. Honey, coconut, sugarcane

7. Which group of foods consist of energy giving foods only?
  - A. Peas, orange, sukumawiki
  - B. Arrow root, sugarcane, ugali
  - C. Eggs, milk, meat
  - D. Meat, arrow root, orange
8. Soil that cracks easily when dry\_\_\_
  - A. is good for farming
  - B. has big air space
  - C. is found at the river bank
  - D. has large soil particles
9. Gabions are used for controlling gulley erosion. Which one of the following areas is one likely to observe gulleys?
  - A. On flat roads with grass
  - B. On a flat land with trees
  - C. Around classrooms
  - D. On steep slopes without grass and trees
10. Which one of the following substances floats on water?
  - A. Nail
  - B. Wax
  - C. Piece of glass
  - D. Crushed bottle top
11. Below is a chart showing the composition of air

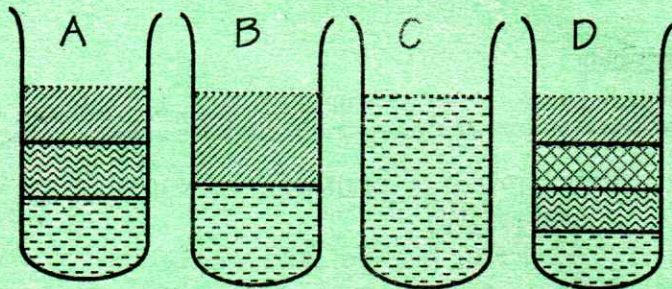


The part labeled T is used \_\_\_\_\_

- A. For making proteins in plants
  - B. In electric bulbs and tubes
  - C. By leguminous plants
  - D. For preserving soft drinks
12. All liquids have \_\_\_\_\_
    - A. Definite shape
    - B. No definite shape
    - C. No definite volume
    - D. No definite mass

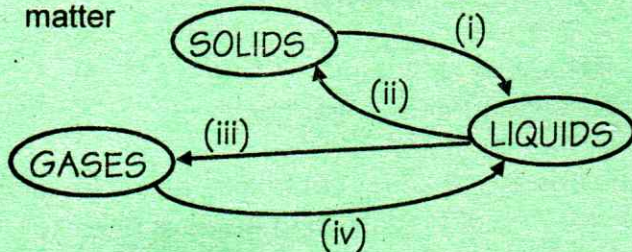


13. Class seven pupils of TWIGA school put equal amount of water, milk kerosene and cooking oil in a glass container. The pupils shook the glass and left it to settle. The science teacher then asked the pupils to draw how the liquids appeared in the glass.



Which one of the above diagrams was correctly drawn?

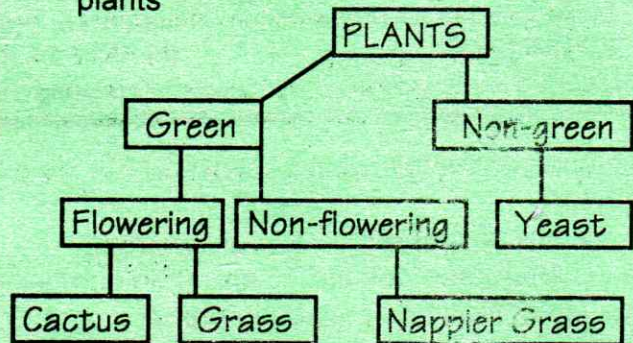
14. Below is a chart showing changes in states of matter



Condensation process is represented by arrow ....

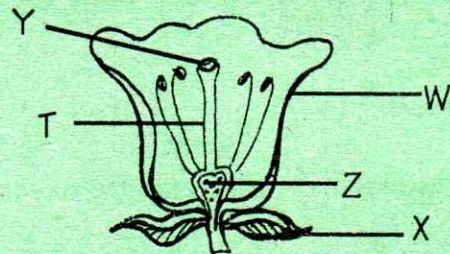
- A. (iv) B. (iii) C. (ii) D. (i)
15. A beam balance is used to measure  
A. Mass B. Density  
C. Volume D. Area
16. Which is the centre of the solar system?  
A. Jupiter B. Sun  
C. Stars D. Moon
17. Which one of the following sexual transmitted infections is caused by a virus?  
A. Gonorrhoea B. Chancroid  
C. Genital herpes D. Syphilis
18. The following features describes a certain type of weed  
(i) Thorns on the stem and leaves  
(ii) Purple flower  
(iii) Yellow fruits when ripe
- The weed described above also:  
A. Grows upright  
B. Is edible  
C. Has green and purple leaves  
D. Has a fleshy stem
19. Which one of the following animals found in the farm is not correctly matched with its products?  
A. Goat – milk and mutton  
B. Poultry – eggs and meat  
C. Sheep – mutton and milk

- D. Cattle – beef and milk
20. Which one of the following is NOT a use of water for enjoyment purposes?  
A. Sport fishing B. Skiing  
C. Fish rearing D. Swimming
21. The diagram below shows classification of plants



Which plant was WRONGLY classified?

- A. Cactus B. Yeasts  
C. Grass D. Nappier grass
22. Which one of the following features is common between a duck and a turtle? Both  
A. Breathe through gills  
B. Have feathers  
C. Use lungs for breathing  
D. Lay unfertilized eggs
23. The diagram below shows parts of a flower



Which part is responsible for protection of the flower while in bud stage?

- A. X and Y B. W C. X D. Z and T
24. Tendrils are modified  
A. Leaves B. Flowers  
C. Stems D. Buds
25. Which one of the following nutrients are obtained by an animal that feeds on lucern?  
A. Vitamins B. Proteins  
C. Minerals D. Carbohydrates
26. Below are signs and symptoms of a certain waterborne disease  
(i) Severe headaches  
(ii) Sores in the walls of intestine  
(iii) Fever  
(iv) Abdominal pains



The disease described above is

- A. Bilharzia                      B. Cholera  
C. Typhoid                        D. Malaria

27. Which one of the following animals is NOT attacked by ticks?

- A. Pigs                      B. Cattle  
C. Sheep                    D. Goats

28. Which one of the following methods of controlling livestock parasites controls both liver fluke and hook worms

- A. Spraying  
B. Dusting with chemicals  
C. Dipping  
D. De worming

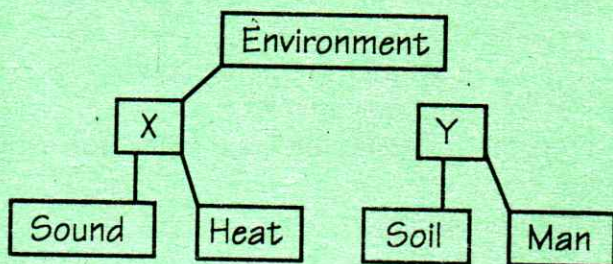
29. Which gases dissolve in water to form acid rain?

- A. Sulphur dioxide and carbon monoxide  
B. Carbon dioxide and nitrogen  
C. Carbon monoxide and sulphur trioxide  
D. Carbon dioxide and sulphur dioxide

30. Which one of the following is NOT a good behavior when having meals?

- A. Not licking fingers  
B. Talking to a person through a phone with foods in your month  
C. Serving enough food at your plate at a time  
D. Not using tooth picks to remove food particles between your teeth

31. The diagram below shows components of the environment



Which one of the following correctly represents parts X and Y respectively?

- A. Living and non living components  
B. Major and minor components  
C. Plants and animals  
D. Minor and major components

32. A child at Kamashia health centre was diagnosed with the following signs and symptoms

- (i) sores at the corners of the mouth  
(ii) thin hair  
(iii) child is dull  
(iv) swollen feet

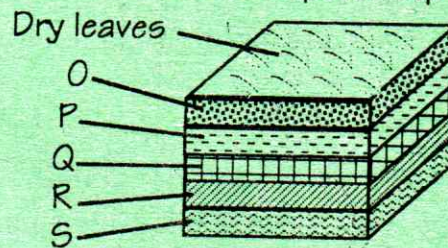
The doctor advised the child to feed on the following foods EXCEPT

- A. Beans                      B. Mutton  
C. Locust                      D. Glucose

33. Which one of the following is a compound Fertilizers

- A. Urea  
B. Calcium ammonium nitrate  
C. Mono ammonium phosphate  
D. Single super phosphate

34. The diagram below shows arrangement of materials on a compost heap



Which letter represented by the part that introduces decomposers to the heap?

- A. O    B. P    C. Q    D. R and S

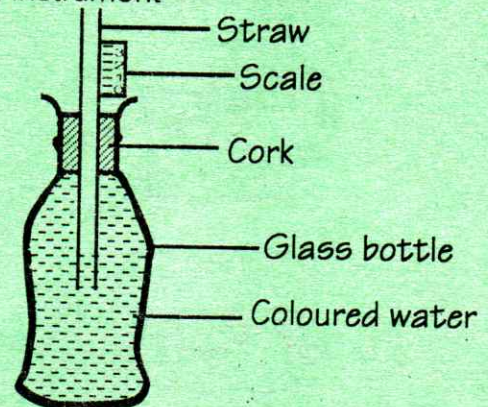
35. A cloud has the following characteristics

- (i) Irregular in shape  
(ii) Rain laden  
(iii) Found low in the sky

The cloud described above also :

- A. indicates fine weather  
B. is found high in the sky  
C. is dark grey in colour  
D. has rounded tops

36. The diagram below shows a weather measuring instrument



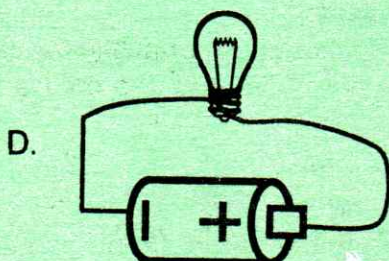
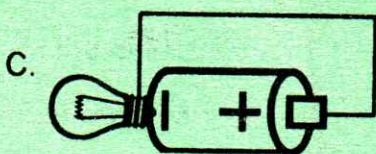
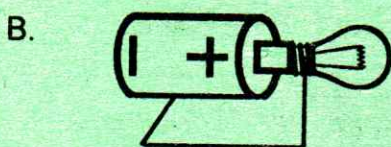
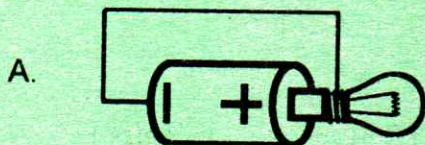
The above instrument works on principle that:-

- A. Air expands when heated and contracts when cooled  
B. Air occupies space  
C. Expansion and contraction of liquids  
D. Matter contracts when heated

37. Which planets are found in the 3<sup>rd</sup>, 5<sup>th</sup> and 7<sup>th</sup> positions respectively from the sun?



- A. Earth, Saturn and Uranus  
 B. Earth, Neptune and Uranus  
 C. Earth, Saturn and Jupiter  
 D. Earth, Jupiter and Uranus
38. Which one of the following is NOT a special sound?  
 A. Ambulance siren  
 B. A bell ringing  
 C. A car hooting  
 D. A child whispering
39. During a science lesson in std 6 at Ndunguze primary school a pupil wrote the word **DAD** and placed it in front of a plane mirror. Which one of the following correctly shows how it could appear?  
 A. DAD    B. QAQ    C. DAD    D. QAQ
40. Which one of the following is a safety measure when dealing with static electricity?  
 A. Do not overload the sockets  
 B. Avoid wearing red clothes during thunderstorms  
 C. Do not work near mains or overhead electrical cables  
 D. Avoid leaning against the wall when it is raining
41. In which one of the following arrangement will the bulb not light?



42. A reflected sound is called .....  
 A. Volume                      B. Pitch  
 C. Echo                          D. Vibration
43. In which one of the following levers is the load found between the effort and fulcrum when in use?  
 A. Wheelbarrow              B. Claw hammer  
 C. Spade                        D. Crowbar
44. The amount of force of gravity acting on an objects is its \_\_\_\_  
 A. Mass                          B. Volume  
 C. Gravity                        D. Weight
45. Which one of the following is NOT a problem related to teeth?  
 A. Tooth decay                B. Plaque  
 C. Bad smell                    D. Shedding of teeth
46. Which one of the following is NOT a proper use of medicine?  
 A. Never take medicines unless you are sick  
 B. Take an overdose of medicine when sick  
 C. Never share medicine with someone else with the same sickness  
 D. Destroy excess medicines
47. Which one of the following disease is a child immunized against at birth and at 10 weeks after birth?  
 A. Poliomyelitis and tuberculosis  
 B. Measles and yellow fever  
 C. Tuberculosis and whooping cough  
 D. Tetanus and poliomyelitis
48. A drug has the following effects on the user when abused  
 (i) Lack of appetite  
 (ii) Wakefulness  
 (iii) Hallucination  
 The drug described above is  
 A. Cocaine                      B. Khat  
 C. Bhang                         D. Mandrax
49. Which one of the following is a social effect of drug abuse?  
 A. Coma                         B. Violence  
 C. Fits                            D. Addiction
50. Which one of the following is NOT a function of the placenta during birth?  
 A. Produces hormones that stops ovulation  
 B. Facilitates exchange of oxygen between the mother and the foetus  
 C. Cushions the foetus  
 D. Does not allow the mixing of blood between the mother and the foetus