

## Kenya Certificate of Secondary Education (

### INSTRUCTIONS TO SCHOOL

1. The information contained in this paper is to enable the head of the school and the teacher in charge of physics to make adequate preparations for this year's joint physics practical examination.

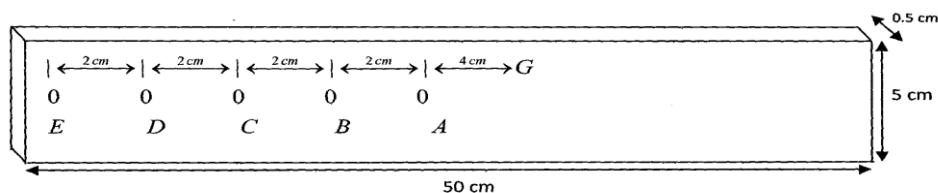
**NO ONE ELSE** should have access to this paper or acquire knowledge of its contents. Great care **MUST** be taken to ensure that the information herein does not reach the candidate either directly or indirectly.

2. The apparatus required by each candidate for the physics practical examination are set out in page 2. It is expected that the ordinary apparatus of a physics laboratory will be available.
3. The physics teacher should note that it is his/her responsibility to ensure that each apparatus acquired for this examination agrees with the specification on page 2.
4. The question paper **WILL NOT** be opened in advance
5. The physics teacher is not expected to perform the experiment

**N/B** Any use of apparatus other than the ones specified may lead to candidates being penalized

**CONFIDENTIAL**

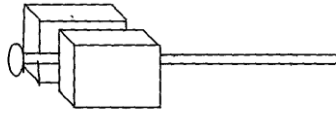
- Q1. The teacher to avail the following wooden plank 50cm X 5cm X 0.5 cm.



The Teacher to determine the centre of gravity G by use of a knife edge prior to exam day and clearly mark it as G.

Drill holes A, B, C, D and E at lengths shown from G.

- Stop watch
- Optical pin
- Complete stand
- 2 wooden pieces each 5cm X 5cm X 1cm, to be used by the students to clamp the optical pin on the bosses.



- Metre rule
- lens holder
- Convex lens  $f=15\text{ cm}$
- Candle
- Mounted white screen

Q2. 100cm long wire mounted on the mm scale and marked x, (gauge 32) or 0.25mm

- 80cm long wire marked W
- $10\ \Omega$  carbon resistor marked R
- Centre zero galvanometer
- Jockey
- 10 connecting wires 3 of which are at least 60 cm long and with crocodile clips at one end.

***NB: MAKE A JOCKEY FROM AN IRON OR ALUMINIUM PLATE IF THE SCHOOL DOES NOT HAVE***