

1. All the following are signs and symptoms of gonorrhoea **except**
- pain when passing out urine
  - yellowish discharge from the penis
  - painful rash develop all over the body
  - can cause blindness to the newborns.
2. Which one of the following is **not** a proper storage of medicines?
- Do not store medicines in direct sunlight.
  - Keep medicines out of reach of children.
  - Liquid medicines should be kept in labelled soda bottles.
  - The cupboard should be kept clean, dry and cool.
3. The following are myths and misconceptions about HIV/AIDS. Which one is **not**?
- AIDS has no cure
  - AIDS is caused by witchcraft
  - People infected with AIDS are thin
  - AIDS does not exist
4. Which statement is **false** about the method of grazing shown below?



- It is a type of rotational grazing
- Pasture is given time to regrow
- The livestock feeds on pasture only
- It can be used to control external livestock parasites

5. A large herd of livestock of a certain farmer was heavily infested with ticks. Which one of the following would be the **most** effective method of controlling the ticks?

- Spraying
- Practising rotational grazing
- Dipping
- Deworming

6. The following are characteristics of a certain vertebrate:

- breathes through lungs*
- gives birth to live young one*
- has constant body temperature*

The above vertebrate is **not** likely to be:

- lizard
- whale
- bat
- rat.

7. Which one of the following components of the environment is **not** likely to be found in plants?

- Water
- Soil
- Air
- Animals

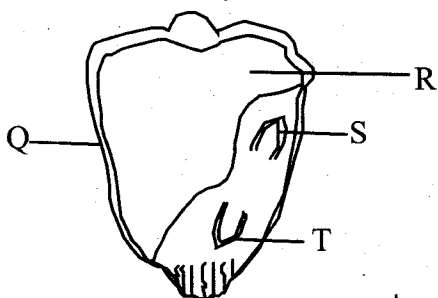
8. All the following are adaptations of plants to dry areas. Which one is **not**?

- Stomata closing during the day
- Leaves are covered with thick waxy cuticle
- Some have needle-like leaves
- They have feathery roots.

9. Which one of the following is **not** an effect of HIV/AIDS to the nation?
- Low productivity in farming
  - Congestion in hospitals
  - School dropouts
  - Loss of self-esteem

10. Which group below consists of storage pests?
- Weevils, aphids and rodents
  - Cutworms, aphids and rodents
  - Weevils, termites and moles
  - Weaver birds, aphids and cutworms

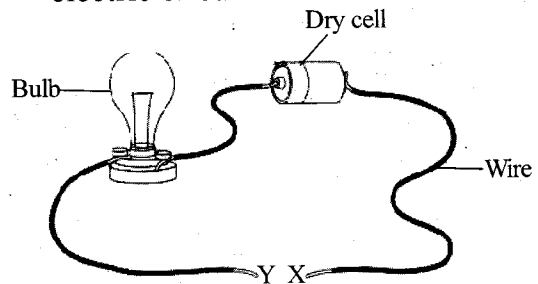
11. The diagram below shows parts of a maize seed.



Which letter represents the part that is **correctly** matched to its function?

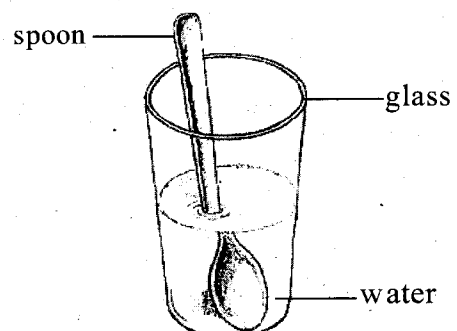
- S - grows into root
  - R - stores food for the embryo plant
  - Q - allows air and water into the seed
  - T - develops into shoot
12. All the following plants store food in their roots **except**
- cassava
  - carrot
  - arrow roots
  - Irish potatoes.

13. The diagram below shows a simple electric circuit.



Which of the following materials when placed in the gap XY will **not** make the bulb light?

- Bearing
  - Pin
  - Marble
  - Razor blade
14. Which one of the following is **not** a special sound?
- Shouting
  - Car engine siren
  - Screaming
  - Hooting of a car
15. Standard six pupils from a certain school carried out the experiment shown below.



From the above experiment, it is **true** to conclude that;

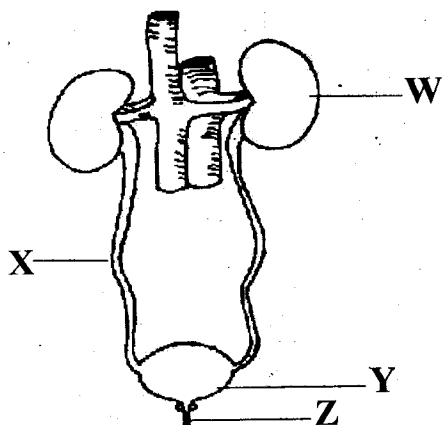
- the spoon bent in water.
- the spoon appeared to be bending in water.
- light bends when it travels from one medium to another.
- light can be reflected when it hits a surface.

16. The following are signs and symptoms of a certain water-borne disease;
- i) *Itching at the bowel*
  - ii) *Rash and itchy skin*
  - iii) *Blood in urine and stool*
  - iv) *Fever*

The above water-borne disease **cannot** be prevented by

- A. proper disposal of human waste
  - B. vaccination during outbreak
  - C. draining stagnant water
  - D. using protective clothing when handling stagnant water.
17. Which one of the following is **not** a use of water at home?
- A. Bathing
  - B. Washing farm tools
  - C. Washing clothes
  - D. Cooking

18. The diagram below shows parts of the human urinary system.



Which letter represents the part that produces urine?

- A. X
- B. Y
- C. W
- D. Z

19. In which part of the human digestive system is calcium absorbed?
- A. Colon
  - B. Small intestine
  - C. Rectum
  - D. Stomach

20. Deoxygenated blood from the heart is pumped out through the
- A. pulmonary artery
  - B. vena cava
  - C. aorta
  - D. pulmonary vein.

21. Which part of the female reproductive system allows for the growth and development of the foetus?
- A. Uterus
  - B. Ovary
  - C. Fallopian tube
  - D. Cervix

22. Which type of organic manure is **most** likely to release soil nutrient fastest?
- A. Green manure
  - B. Compost manure
  - C. Farmyard manure
  - D. Urea

23. Equal amount of water was poured in identical containers with soil. In which soil are you **most** likely to observe a lot of water from the top after some time?
- A. Sand
  - B. Clay
  - C. Loam
  - D. None

24. In which type of erosion is soil uniformly eroded?
- Gulley erosion
  - Splash erosion
  - Rill erosion
  - Sheet erosion

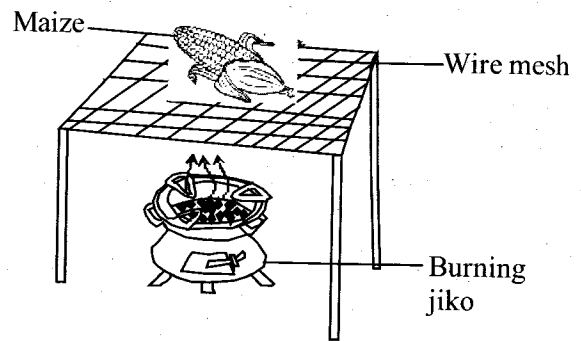
25. All the following foods are rich in proteins **except**
- peas
  - termites
  - milk
  - Wheat.

26. The following are signs of nutritional deficiency diseases;
- Severe loss of weight*
  - Swollen body parts*
  - The skin turns pale*
  - Brownish thin hair*

Which group consists of the signs of kwashiorkor?

- i, iii
  - ii, iv
  - i, iv
  - ii, iii
27. Which one of the following is **not** a reason for lighting a house?
- To kill pests
  - To see clearly
  - To read comfortably
  - To avoid accidents

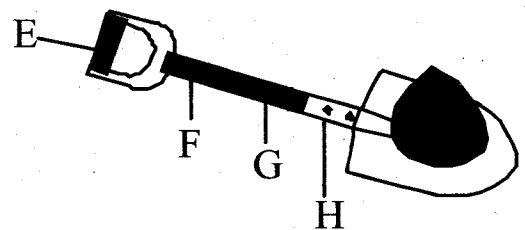
28. Maize was placed on a wire mesh above a burning jiko as shown below.



Heat from the jiko **mainly** reached the maize through

- evaporation
  - convection
  - radiation
  - conduction.
29. Which one of the following is **not** a magnetic material?
- Copper
  - Steel
  - Tin
  - Cobalt
30. Which changes of states of matter below require a substance to loss heat to the surrounding?
- Condensation and freezing
  - Melting and condensation
  - Melting and evaporation
  - Evaporation and freezing
31. Which one of the following is **not** a function of the smallest component of air?
- Used as fire extinguisher
  - It is required in seed germination
  - Used in making plant food
  - It is used as a food preservative

32. Which one of the following is **not** a characteristic of all animals? They
- move from place to place
  - remove waste
  - feed
  - give birth
33. All the following internal parasites attack the liver of livestock **except**
- roundworms
  - tapeworms
  - hookworms
  - liverflukes.
34. Which plant below is **not** adapted to dry areas?
- Acacia
  - Sisal
  - Cactus
  - Banana
35. Which one of the following is **not** a social effect of drug abuse?
- Brain damage
  - Conflict and violence
  - Truancy
  - Isolation
36. Which one of the following is the last stage during birth process?
- Foetus comes out through the birth canal
  - Removal of the afterbirth
  - Tying and cutting of the umbilical cord
  - Contraction of the walls of the uterus
37. Which one of the following is **not** a mass media in which one can create awareness about HIV/AIDS?
- Radio
  - Magazines
  - Television
  - Billboards
38. Which type of weed below can be used as a vegetable?
- Blackjack
  - Sodom apple
  - Pigweed
  - Wandering jew
39. All the following planets are found before Mars from the sun. Which one is **not**?
- Earth
  - Mercury
  - Jupiter
  - Venus
40. Which statement below is **false** about a rain gauge?
- It measures the amount of rainfall in millimetres
  - The amount of rainfall is measured same time every day
  - It should not be placed under trees and near building
  - It is raised mainly to reduce the rate of evaporation.
41. The diagram below shows a simple lever.

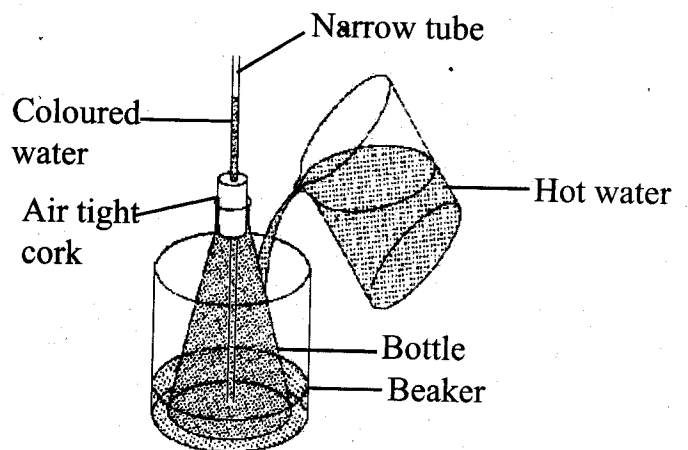


Which letter shows the **best** position of effort?

- H
- F
- E
- G

42. Vincent is heavier than Joel. For the two boys to balance on a see-saw
- Joel should move farther from the pivot.
  - Both boys should sit on the same side of the see-saw.
  - Both boys should sit at equal distance from the pivot.
  - Vincent and Joel should interchange their sitting positions.
43. Which one of the following is **not** a pull or push?
- Gravity
  - Weight
  - Friction
  - Mass
44. Which simple tool below does **not** require sharpening?
- Saw
  - Knife
  - Bottle opener
  - Jembe
45. Which one of the following is **not** a use of moving air?
- Winnowing
  - Generating electricity
  - Sailing canoes
  - Blowing roofs away
46. Which one of the following shows the **correct** procedure of separating a mixture of sand and sugar?
- Sieving → Filtering → Evaporation
  - Dissolving → Filtering → Evaporation
  - Filtering → Dissolving → Sieving
  - Filtering → Decanting → Evaporation

47. Some Standard five pupils carried out the experiment shown below.



What were they investigating?

- Changes of states of matter
- Expansion in liquids
- Liquids have indefinite shapes
- Evaporation in liquids

48. All the following objects sink in water **except**

- sand
- a piece of glass
- nail
- rubber band.

49. In which of the following activities is friction force **least** useful?

- Pulling a box across the floor
- Flying a kite
- Pushing a box up a steep slope
- Dribbling a ball in the field

50. All the following foods can be preserved by freezing **except**

- fresh kales
- meat
- fish
- cooked beans.