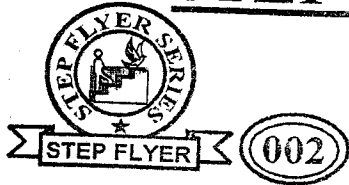


STEP FLYER ASSESSMENT TEST

STD 8 - YEAR 2020

SCIENCE

8



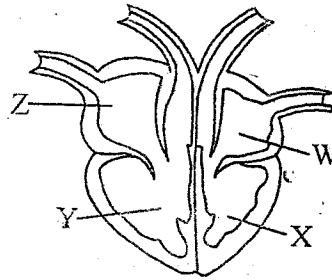
READ THESE INSTRUCTIONS CAREFULLY.

Time : 1 Hour 40 Mins

1. You have been given this question paper and a separate answer sheet. The question paper contains 50 questions.
2. Make sure that you have written on the answer sheet.

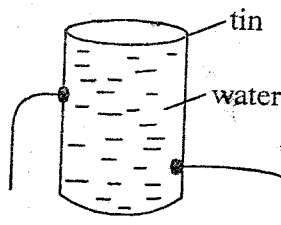
1. Which one of the following organs of digestive system is **not** involved in production of digestive juices?
A. Mouth B. Stomach
C. Duodenum D. Small intestine
2. Three of the following are functions of blood except
A. transport digested food from ileum to all parts of the body.
B. transports wastes from the body to excretory organs.
C. distribute heat to all parts of the body.
D. transports oxygen from body parts to the lungs.
3. Which pair of animals has external fertilization?
A. Toad and duck billed platypus
B. Shark and frog
C. Turtles and salamander
D. Cow and sheep
4. Pine reproduce by means of
A. seeds B. flowers
C. spores D. budding
5. The spread of HIV/AIDS among youths can **best** be prevented by:
A. abstinence
B. being faithful
C. use of condoms
D. having one partners
6. The best method of controlling the types of soil erosion that makes small holes under trees and near buildings is:
A. practicing contour farming
B. mulching
C. making terraces
D. building gabions

7. The figure below shows a human heart;



Which part labelled above receives the impure blood from the body?

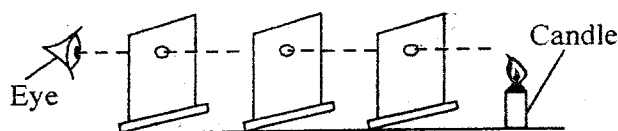
- A. Z B. W
C. Y D. X
8. The gaps in a railway line are left in order to;
A. allow contraction when cold.
B. allow smooth move of the train.
C. absorbs the shock when train is moving.
D. allow the expansion when hot.
 9. Which one of the following pair of sexually transmitted infections are caused by bacteria?
A. Syphilis and HIV
B. Gonorrhoea and genital herpes
C. HIV and Chancroid
D. Chancroid and Syphilis
 10. Std 6 pupils prepared the set up below to investigate a certain aspect of liquids.



Which conclusion could the pupils make from the set up?

- A. Pressure in liquids increases with height.
B. Pressure in liquids varies at different depths.

- C. Liquids exerts pressure depending of temperature.
D. Pressure in liquids is equal at the same depth.
11. Heat from a burning jiko reaches to the legs of the person besides the jiko through a process called:
 - A. radiation
 - B. convection
 - C. conduction
 - D. convection and radiation
 12. Which group of drugs below are not prohibited in Kenya?
 - A. Tobacco, miraa and bhang
 - B. Cocaine, mandrax and heroine
 - C. Alcohol, miraa and cocaine
 - D. Khat, tobacco and alcohol
 13. Which one of the following statements is **not** correct about sound?
 - A. A small drum produce high pitched sound when hit
 - B. A whisper is a soft sound
 - C. A big drum amplifies sound making it round.
 - D. A thin, short and tight string produce low pitched sound when plucked
 14. Which one of the following intestinal parasite does not attack cattle?
 - A. Hookworms
 - B. Tapeworms
 - C. Lungworms
 - D. Roundworms
 15. Which one of the following lever has effort distance always longer than the load distance when in use?
 - A. Fishing rod
 - B. See saw
 - C. Wheel barrow
 - D. Spade
 16. The set-up below was used by pupils to investigate a certain property of light.

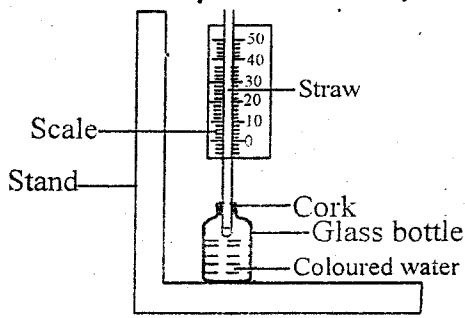


The experiment above can also be demonstrated using:

- A. a ruler
- B. piece of cloth
- C. transparent glass and water
- D. a flexible pipe

17. The juice produced by the stomach is used to
 - A. digest starch
 - B. kill germs
 - C. digest proteins
 - D. complete the digestion process
18. Which plant below is different from the other plants?
 - A. Algae
 - B. Mucor
 - C. Mould
 - D. Mildew
19. Which group of foods below are recommended for a child suffering from kwashiorkor?
 - A. Maize, rice, wheat
 - B. Peas, milk, eggs
 - C. Eggs, cheese, rice
 - D. Arrow roots, sweet potatoes, fish
20. Which one of the following plant does **not** store food in the same part as sugarcane?
 - A. Cactus
 - B. Sweet potatoes
 - C. Irish potatoe
 - D. Ginger
21. The following are points given by a pupils concerning a certain type of clouds.
 - (i) appear like bundles of cotton wool
 - (ii) are high in the sky
 - (iii) dark grey in the sky
 - (iv) mountainous in shape
 Which characteristics are for the clouds that indicated heavy rainfall?
 - A. i, ii
 - B. ii, iii
 - C. iii, iv
 - D. i, iii
22. How does the salt preserve food?
 - A. by adding taste
 - B. by dehydrating food
 - C. by lowering the temperature
 - D. by removing decomposers
23. Which method of soil conservation below improves soil fertility and water retention?
 - A. Mulching
 - B. Crop rotation
 - C. Contour farming
 - D. making gabions

24. The diagram below shows a simple improvised weather instrument.



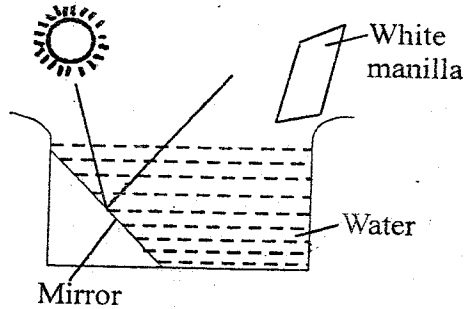
Which one of the following would make the instrument to measure a small change in temperature?

- A. removing the cork
 B. increasing the temperature
 C. using a narrow straw
 D. using a bigger glass bottle
25. Which one of the following is **not** a way of conserving water?
 A. Re-using
 B. Recycling
 C. Harvesting rain water
 D. polluting
26. Which one of the following is **not** a source of current electricity?
 A. Solar panel B. Dynamol
 C. Windmill D. Torch
27. Which one of the following statement is **incorrect**?
 A. Sand is insoluble in water
 B. The ability of substance to dissolve in liquid is solubility
 C. All solids dissolve in water
 D. Salt dissolve in water
28. The group of animals that lay unfertilised eggs and has moist skin is called
 A. amphibians B. vertebrates
 C. reptiles D. fish
29. Which group of plants grow in the same environment?
 A. Cactus, acacia and buttercup
 B. Waterlily, rice and euphobia
 C. Murram grass, water hyacinth, acacia
 D. Sisal, acacia and prickly pears
30. Which one of the following is the importance of post-test counselling?
 A. Prepares one to accept the results
 B. Enables one to make informed decision whether or not to take the test
 C. Helps one to understand basics about HIV/AIDS
 D. Help one to understand the risk of HIV

31. The best method of managing organic wastes in our environment is:
 A. burning
 B. making manures
 C. burying deep in soil
 D. throwing in rivers
32. Which one of the following method of separating mixtures is wrongly matched with the factor to consider?
 A. Picking - size
 B. Filtering - solubility
 C. Decanting - densities
 D. Winnowing - solubility
33. In a female reproductive system the implantation takes place in part called
 A. ovary B. oviduct
 C. uterus D. vagina
34. Which group of small animals below feed by sucking?
 A. Tick, butterfly, spider
 B. Grasshopper, tick, hen
 C. Chicken, rat, mice
 D. Butterfly, spider, grasshopper
35. Which form of energy cannot pass through a vaccum:
 A. Light B. Heat
 C. Sound D. Heat and light
36. Which one of the following is **not** a good conductor of electricity?
 A. Iron rod B. Graphite
 C. Dry wool D. Steel wool
37. The following are signs and symptoms of a certain common communicable disease
 (i) *blood in the spatum*
 (ii) *much loss of weight*
 (iii) *chest pain*
 (iv) *prolonged cough*
 The disease above is **mainly** prevented by;
 A. Immunization
 B. Destroying bleeding places for mosquito
 C. Avoid congested places
 D. Avoid dust
38. Which one of the following is **not** correctly matched with its use in the body?
 A. Calcium - making strong bones
 B. Iron - healing of wounds and bones
 C. Vitamin A - proper eye sight
 D. Vitamin D - strong teeth and bones

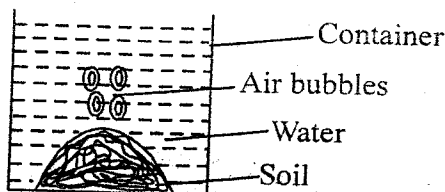
39. Which statement is **not** true about force?
 A. Can be reduced by streamlining bodies.
 B. Make a stationary object to move.
 C. Measured using spring balance.
 D. Can be used to change the state of matter.

40. The set-up below was used by pupils to investigate a certain aspect of light.



What were the pupils investigating

- A. formation of a rainbow
 B. reflection of light
 C. refraction of light
 D. dispersion of light
41. Shadows are formed due to the fact that, light
 A. is deflected
 B. travel in a straight line
 C. bends as it travel from one medium to another
 D. travel in waves
42. Which one of the following is **not** a use of water in recreation?
 A. Surfing
 B. Fountains making
 C. Skiing
 D. Scuba diving
43. The set up below was used to investigate a certain soil component.



Which component was being investigated?

- A. Soil
 B. Air
 C. Water
 D. Humus

44. Which soil component improves the ability of water to hold more water?
 A. Water
 B. Mineral particles
 C. Humus
 D. Air

45. Which one of the following material does **not** allow magnetic force to pass through?
 A. Copper
 B. Glass
 C. Plastic
 D. Iron

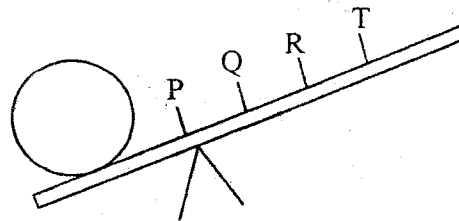
46. Which one of the following is a major living component of environment?

- A. Plants
 B. Air
 C. Soil
 D. Water

47. The quantity of matter in a substance is measured in units called

- A. newtons
 B. joules
 C. millilitres
 D. grams

48. The figure below shows a lever in use.



At which point should the effort be applied in order to use the least effort?

- A. P
 B. Q
 C. R
 D. T

49. In a feeding relationship the most abundant element in the environment should be:

- A. primary consumer
 B. producers
 C. secondary consumer
 D. tertiary consumer

50. The two component of air that make almost 21% together are:

- A. Carbon dioxide and rare gases
 B. Nitrogen and rare gases
 C. Oxygen and Nitrogen
 D. Oxygen and Carbon dioxide