

**SCIENCE**

Time: 1 hour 40 mins

INSTRUCTIONS TO CANDIDATES (Read these instructions carefully.)

1. You have been given this question booklet and a separate answer sheet. The question booklet contains 50 questions.
2. Do any necessary rough work in this booklet.
3. When you have chosen your answer, mark it on the **ANSWER SHEET**, not in the question booklet.

HOW TO USE THE ANSWER SHEET.

4. Use an ordinary pencil only.
5. Make sure that you have written on the answer sheet:-
YOUR INDEX NUMBER
YOUR NAME
NAME OF YOUR SCHOOL
6. By drawing a **dark line** inside the correct numbered boxes, mark your full Index Number (i.e. School Code Number and the three-figure Candidate's Number) in the grid near the top of the answer sheet.
7. Do not make any marks outside the boxes.
8. Keep your answer sheet as clean as possible and **do not fold it**.
9. For each of the questions 1-50, four answers are given. The answers are lettered A, B, C, D. In each case, only **ONE** of the four answers is correct. Choose the correct answer.
10. On the answer sheet, show the correct answer by drawing a **dark line** inside the box in which the letter you have chosen is written.

Example:-**In the Question Booklet:**

16. The following are carnivores **except**
- A. leopard.
 - B. elephant.
 - C. hyena.
 - D. lion.
- The correct answer is **B**.

On the Answer sheet:

14. [A] [B] [C] [D] 15. [A] [B] [C] [D] 16. [A] [B] [C] [D] 17. [A] [B] [C] [D]

In the set of boxes number 16, the box with letter **B** printed in it is marked.

11. Your dark line **MUST BE** within the box.
12. For each question, **ONLY ONE** box is to be marked in each set of four boxes.

**This question paper consists of 7 printed pages.**

1. Internal livestock parasites cause the following on animals **except**

- A. poor health.
- B. anaemia.
- C. irritation.
- D. swollen stomach.

2. Hookworms in livestock **mainly** affect

- A. poultry and fish.
- B. sheep and goats.
- C. cattle and sheep.
- D. goats and pigs.

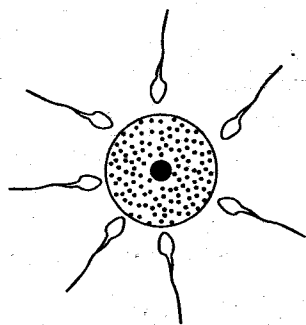
3. The attachment of the foetus to the uterine walls is called

- A. gestation.
- B. conception.
- C. fertilization.
- D. implantation.

4. The correct units for measuring force is

- A. newtons.
- B. spring balance.
- C. kilograms.
- D. grams.

5. The diagram below shows sperms surrounding an ovum during fertilization



Which one of the following statements is **true**?

- A. All the sperms penetrate the ovum.
- B. The fertilized ovum becomes the embryo.
- C. Only one sperm enters the ovum and fertilizes it.
- D. The head and the tail of the sperm penetrate and fuse with the ovum.

6. Excretory system consists of the following **except**

- A. lungs.
- B. skin.
- C. kidneys.
- D. anus.

7. Sound from a source travels

- A. in all directions.
- B. in one direction.
- C. in waves.
- D. upwards and downwards.

8. The following are all physical changes that occur in girls during adolescence **except** one. Which one?

- A. Enlargement of breasts.
- B. Hips broaden.
- C. Growth of pubic hair.
- D. Chest and shoulders broaden.

9. Among the following uses of water, which one is a use of water in recreation?

- A. Irrigation.
- B. Making fountains.
- C. Sport fishing.
- D. Watering animals.

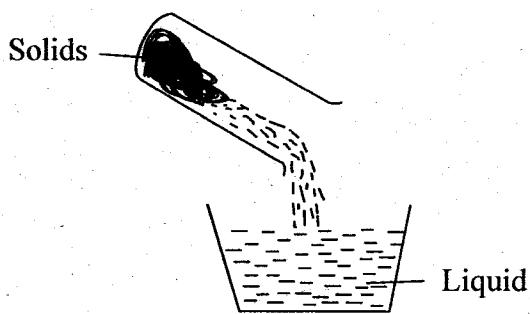
10. Std.6 pupils carried the following materials to class:

- Basin*
- Water*
- Mirror*

What were they likely to investigate?

- A. Refraction of light.
- B. Reflection of light.
- C. Bending of light.
- D. Making a rainbow.

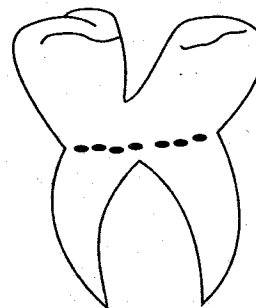
11. The diagram below shows a method of separating mixtures



The method is referred to as

- A. pouring.
B. sieving.
C. decanting.
D. filtering.
12. The weather instrument that is used to determine both the direction and strength of wind is
- A. windvane.
B. thermometer.
C. windsock.
D. raingauge.
13. Which one of the following is the function of the amniotic fluid during pregnancy?
- A. Facilitates exchange of waste materials from foetus to the mother.
B. Exchange of oxygen and carbon dioxide between the mother and the foetus.
C. Protects the foetus from shock and accidents.
D. Facilitates the transfer of food from the mother to foetus.

14. The problem related to tooth shown below is called



- A. dental caries.
B. cavity.
C. gingivitis.
D. bleeding gum.

15. The following are importance of water in the diet **except**

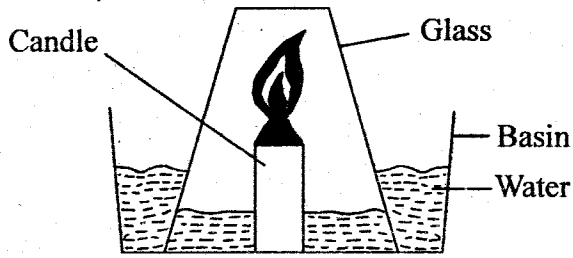
- A. keeps our bodies cool.
B. helps to prevent constipation.
C. helps in blood formation.
D. helps in removal of wastes.

16. A child with pale fingernails and feels tired easily is also likely to have
- A. swollen abdomen.
B. wrinkled face.
C. shortness of breath.
D. brownish hair.

17. Which one of the following is an artificial way of lighting a house?

- A. Using skylights.
B. Using glass windows.
C. Using gas lamps.
D. Using transparent roofs.

18. The set up below was used by std. 6 pupils.

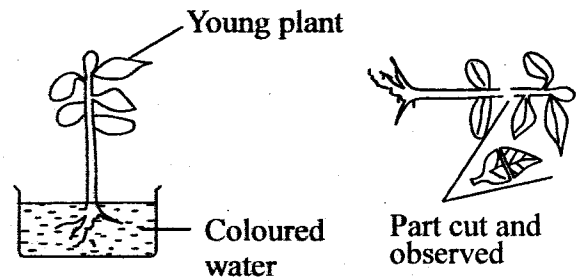


After the experiment, pupils concluded that

- A. air occupies space.
 B. air is denser than water.
 C. air is a mixture of gases.
 D. air has weight.
19. Beans and peas have taproots with root nodules that help in
- A. fixing oxygen into the soil.
 B. absorption of carbon dioxide from the atmosphere.
 C. fixing atmospheric nitrogen into the soil.
 D. providing shelter to bacteria.
20. Which one of the following represents the correct steps on foetal development?
- A. Zygote → foetus → embryo → baby.
 B. Foetus → zygote → embryo → baby.
 C. Embryo → foetus → zygote → baby.
 D. Zygote → embryo → foetus → baby.
21. Which one of the following materials can be attracted by a magnet?
- A. Copper coin.
 B. Steel spoon.
 C. Aluminium plate.
 D. Silver coin.
22. Among the following materials, which will allow some light to pass but one cannot see through?
- A. Mirror.
 B. Frosted glass.
 C. Clean water.
 D. Wood.

23. Use of drip irrigation is a method of conserving water through
- A. using it sparingly.
 B. recycling.
 C. re-using.
 D. harvesting.

24. Std. 5 pupils performed the experiment shown below.



The experiment was set up to investigate

- A. absorption in plants.
 B. breathing in plants.
 C. food storage in plants.
 D. transportation in plant.
25. The following are characteristics of fish **except** one. Which one?
- A. Varying body temperature.
 B. Body covered with scales.
 C. Lay fertilized eggs.
 D. Breathe by gills.
26. Which plant below is a green and non-flowering plant?
- A. Cactus.
 B. Grass.
 C. Sunflower.
 D. Fern.

27. Solids which dissolve in liquids are called

- A. solutes.
- B. solvents.
- C. suspensions.
- D. solution.

28. The transfer of heat in liquids is **mainly** through

- A. radiation.
- B. convection.
- C. conduction.
- D. convection and conduction.

29. The soil that has the poorest drainage and floods easily is

- A. loam.
- B. clay.
- C. sandy.
- D. gravels.

30. Which one of the following animal feeds provides energy to animals?

- A. Sunflower seeds.
- B. Lucerns.
- C. Salt licks.
- D. Banana stems.

31. A certain drug when abused causes

- vomiting
- drowsiness
- difficulty in breathing
- poor thinking

The drug is most likely to be

- A. bhang.
- B. heroin.
- C. cocaine.
- D. alcohol.

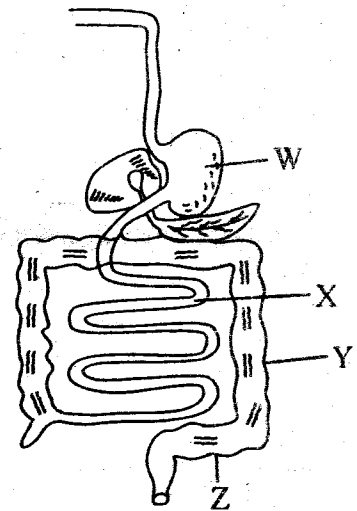
32. Which one of the following sexually transmitted infections causes yellow pus oozing out of the genitals and swelling of knees?

- A. Chancroid.
- B. Syphilis.
- C. Gonorrhoea.
- D. Genital herpes.

33. Which one of the following levers when in use has the position of the effort between the fulcrum and the load?

- A. Wheelbarrow.
- B. Spade.
- C. Clawhammer.
- D. Crowbar.

Study the diagram below



34. In which parts labelled above does absorption of foods take place?

- A. W
- B. X
- C. Y
- D. Z

35. All the following are excretory products **except**
- A. excess water.
 - B. excess salts.
 - C. urea.
 - D. faeces.

36. The surrounding of a living thing is its
- A. habitat.
 - B. shade.
 - C. shelter.
 - D. environment.

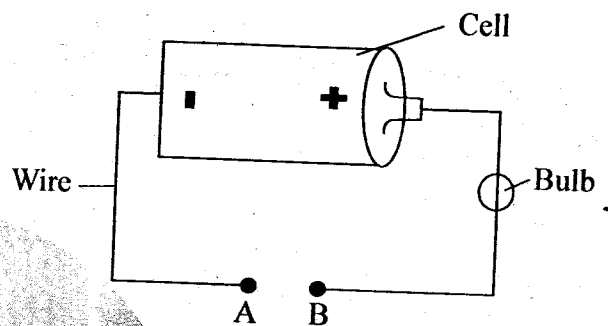
37. Which food below when eaten will provide the body with energy and proteins?
- A. Avocado.
 - B. Milk.
 - C. Ripe bananas.
 - D. Fish.

38. The crop pest that causes damage to crops by sucking sap from leaves and stems is
- A. cutworms.
 - B. aphids.
 - C. stalkborers.
 - D. weevils.

39. The following are special sounds **except**
- A. screaming.
 - B. car hooting.
 - C. fire siren.
 - D. people shouting.

40. Which pair of methods below can be used to separate a mixture of wheat flour, husks and wheat seeds?
- A. Winnowing and picking.
 - B. Sieving and winnowing.
 - C. Sieving and filtering.
 - D. Sieving and picking.

Study the diagram below



41. Which one of the following material when used to complete gap A, B will make the bulb light?

- A. Plastic cable.
- B. Plastic ruler.
- C. Graphite.
- D. Sellotape.

42. Which one of the following statement **best** describes fertilization in plants? When
- A. pollen grains fall on the stigma and germinate.
 - B. pollen grains fall on the stigma.
 - C. pollen grains fuse with the ovules.
 - D. pollen grains are transferred from the anther.

43. Plants used in making green manure should not be

- A. very leafy.
- B. fast in growth.
- C. low in nitrogen content.
- D. quick in rotting.

44. The component of blood that helps in blood clotting is

- A. platelets.
- B. plasma.
- C. white cells.
- D. red cells.

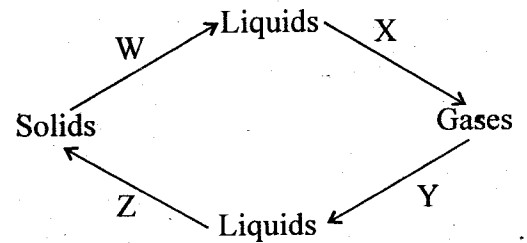
45. The main function of a diastema in herbivorous animals is to

- A. help in proper turning of food when chewing.
- B. tear grass materials.
- C. grind vegetables matter.
- D. prevent the herbivores from biting their tongue.

46. The best method to prevent the spread of malaria and bilharzia is by

- A. covering pit latrines.
- B. wearing protective clothing.
- C. boiling drinking water.
- D. clearing stagnant water.

47. The flow chart below shows changes of states of matter



Which two processes occur due to increase in heat?

- A. W, Z
- B. Z, Y
- C. X, Y
- D. W, X

48. Which one of the following is a characteristic of xerophytes?

- A. They have flexible stems.
- B. They have shallow root system.
- C. They have thick cuticles.
- D. They have many stomatas.

49. Which one of the following animals moves by hopping and flying?

- A. Flea.
- B. Cockroach.
- C. Kangaroo.
- D. Cricket.

50. The following are effects of drugs. Which one is a health effect?

- A. Truancy.
- B. Induced accident.
- C. Lack of concentration.
- D. Rape.