



507

KCPE SECOND TRIAL

STANDARD EIGHT - 2020

Time: 1hr. 40 Mins.

SCIENCE

INSTRUCTIONS TO CANDIDATES (Read these instructions carefully)

1. You have been given this question booklet and a separate answer sheet. The question booklet contains **50** questions.
2. When you have chosen your answer mark it on the **ANSWER SHEET**, not in the question paper.
HOW TO USE THE ANSWER SHEET.
3. Use an ordinary pencil only.
4. Make sure that you have written on the answer sheet:-
YOUR INDEX NUMBER
YOUR NAME
NAME OF YOUR SCHOOL
5. By drawing a **dark** line inside the correct numbered boxes mark your full Index Number (i.e. School Code Number and the three-figure Candidate's Number) in the grid near the top of the answer sheet.
6. Do not make any marks outside the boxes.
7. Keep your answer sheet as clean as possible and **DO NOT FOLD IT**.
8. For each of the questions 1-50 four answers are given. The answers are lettered A, B, C, D. In each case only **ONE** of the four answers is correct. Choose the correct answer.
9. On the answer sheet show the correct answer by drawing a **dark line** inside the box in which the letter you have chosen is written.

Example

17. Which of the following mixture cannot be separated using a magnet?

- A. Iron and steel
- B. Aluminium and iron
- C. Zinc and steel
- D. Silver and steel

The correct answer is A

On the answer sheet:

17. [A] [B] [C] [D] 18. [A] [B] [C] [D] 19. [A] [B] [C] [D] 20. [A] [B] [C]

[D]

In the set of boxes number 17, the box with letter A printed in it is marked.

10. Your **dark line MUST BE** within the box.
11. For each question **ONLY ONE** box is to be marked in each set of four boxes.



5072002

This question paper consists of 8 printed pages.

1. During fertilization, zygote is formed at the

- A. uterus
- B. oviduct
- C. ovary
- D. birth canal

2. Which one of the following sexually transmitted infections can lead to infertility and blindness on newly born baby?

- A. Chancroid
- B. HIV and AIDS
- C. Syphilis
- D. Gonorrhoea

3. The following are stages of giving birth but not in correct order

- i) *Contraction of the uterine wall*
- ii) *Cutting of the umbilical cord*
- iii) *Pushing of the baby*
- iv) *Release of the afterbirth.*
- v) *Bursting of the amnion sac*

Which is the CORRECT order of the stages?

- A. i, ii, iii, iv, v
- B. i, v, iii, ii, iv
- C. ii, iii, i, v, iv
- D. i, v, ii, iii, iv

4. Given below are some characteristics of plants.

- i) *Thin cuticle on leaves*
- ii) *Flexible stem*
- iii) *Succulent*
- iv) *Sunken stomata*

Which pair of the characteristics is for xerophytes?

- A. i and ii
- B. iii and iv
- C. iv and ii
- D. i and iv

5. A pupil was observed with the following signs and symptoms

- i) *Fever*
- ii) *Loss of appetite*
- iii) *Headache*
- iv) *Shivering*
- v) *Vomiting*

Which of the following would be the BEST advice to prevent the above disease?

- A. Immunization
- B. Destroying breeding places of mosquitoes
- C. Living in a well ventilated house
- D. Eating a balanced diet

6. Which one of the following diseases is not immunized against using DPT vaccine?

- A. Tetanus
- B. Whooping cough
- C. Polio
- D. Diphtheria

7. Which crops are correctly matched?

Legume	Cereal	Vegetable	Fruit
A. Oat	Beans	Spinach	Cassava
B. Rice	Arrowroot	Kales	Mango
C. Greengrams	Sweet potato	Lettuce	Avocado
D. Groundnuts	Barley	Onion	Orange

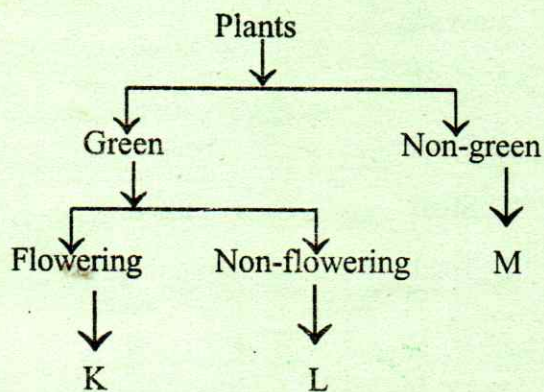
8. The following are characteristics of a weed;

- i) It has small leaves
- ii) It has seeds with hooks
- iii) It has tap root system

Which weed has the above characteristics?

- A. Wandering jew
- B. Thorn apple
- C. Black jack
- D. Double thorn

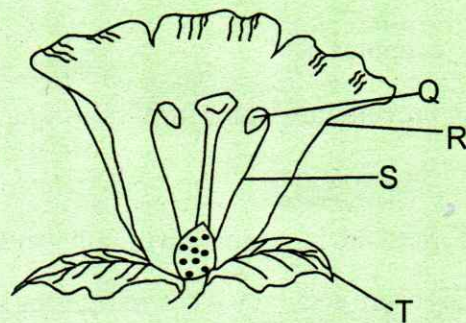
9. The chart below shows classification of plants.



Which plants are CORRECTLY represented by letter K, L and M respectively?

- A. Maize, Beans, Mango
- B. Avocado, Toadstool, Grass
- C. Onion, Cedar, Bracket tree
- D. Cabbage, Puffball, Cypress

10. The diagram below represents parts of a flower



Which part is CORRECTLY matched with its function?

	Part	Function
A.	Q	Produces ovules
B.	R	Protects the flower at budding stage
C.	S	Holds the anther
D.	T	Attracts insects

11. Which of the following is the BEST method of controlling aphids in a farm?

- A. Handpicking
- B. Rotational grazing
- C. Clearing bushes
- D. Spraying

12. Which one of the following is NOT a characteristic of Nimbus clouds?

- A. Appears like bundles of cotton wool
- B. Sign of heavy rainfall
- C. Irregular in shape
- D. Seen low in the sky

13. While making a rain gauge the main reason of using a narrow measuring cylinder is to
- prevent collected water from evaporating
 - prevent rain water from splashing into the container
 - measure large amount of rain water easily
 - ensure accuracy when measuring collected rain water

14. The chart below shows records of weather in a school made by Grade III pupils

Day	Morning	Afternoon
Mon		
Tue		
Wed		
Thur		
Fri		

Which statement is TRUE on the interpretation of the chart?

- Whenever it was sunny, it was also cloudy
- It was only cloudy in the afternoons
- All the days that were windy in the morning, experienced rainfall in the afternoon
- All the afternoons were sunny and cloudy

15. Which one of the following materials CANNOT be used for mounting planets on their orbits?
- Wax
 - Small nails
 - Thorns
 - Pins

16. Which one of the following pairs of animals given below are both harmful animals?
- Dog and snake
 - Gecko and goose
 - Termites and tick
 - Cat and oxen

17. Which of the following animals is CORRECTLY matched with the way it moves?
- Cockroach - leaping
 - Spider - walking
 - Snail - slithering
 - Toad - running

18. The following are products got from goats except
- mohair
 - mutton
 - milk
 - bacon

19. Which of the following groups of animals are all invertebrates?

- A. Fish, frog, newt
- B. Birds, toad, duck
- C. Hen, snake, duck
- D. Crab, millipede, spider

20. Which of the following is a common characteristic between fish and reptile?

They

- A. breathe by means of lungs
- B. have scales
- C. live in water
- D. lay fertilized eggs

21. Which constituent of balanced diet will an animal get when it is fed on oats and lucerne respectively?

- A. Carbohydrates and fats
- B. Proteins and minerals
- C. Vitamins and proteins
- D. Carbohydrates and proteins

22. The diagram below shows a beak of a bird.



The bird is MOST LIKELY feeding on

- A. fish
- B. flesh
- C. cereals
- D. nectar

23. Which one of the following is TRUE about a beam balance?

- A. It measures the quantity of matter
- B. It measures the volume of objects
- C. The scales are marked in both grams and newton
- D. It can be used to measure density

24. Which of the following is NOT true about force?

- A. Force can make a stationary object to move
- B. Force may reduce speed of a moving object if moving in the opposite direction
- C. Force can stop a moving object if moving in the same direction
- D. Force can change the shape of an object

25. Which of the following levers has the position of effort between load and the fulcrum?

- A. Claw hammer
- B. Wheelbarrow
- C. Crowbar
- D. Spade

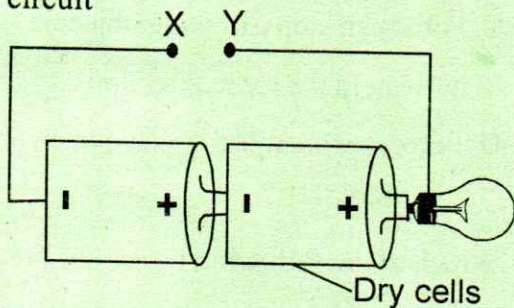
26. In which of the following activities is friction useful?

- A. Skating on ice
- B. Writing on a chalkboard
- C. Birds flying
- D. Fish swimming

27. Filtration and decanting are methods used to separate
- insoluble materials
 - miscible liquids
 - immiscible liquids
 - soluble materials

28. The following are some materials that class seven pupils had during a Science lesson. Which of the materials is not magnetic?
- Iron
 - Aluminium
 - Steel
 - Alnico

29. The diagram below shows a simple electric circuit



Which material given below if placed at the point marked XY can make the bulb light?

- Aluminium foil
 - Biro pen casing
 - Rubber band
 - Matchstick
30. Which one of the following is a compound fertilizer?
- Double super phosphate
 - Urea
 - Calcium Ammonium Nitrate
 - Di-ammonium phosphate

31. The following are characteristics of plants used in making of green manure. Which one is NOT?

- Able to grow fast
- Able to rot fast
- Should have low nitrogen content
- Should be leafy

32. Which internal parasite is found in the intestine of fish?

- Roundworms
- Tapeworms
- Lungworms
- Hookworms

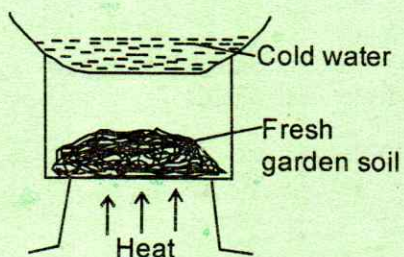
33. Which one of the following is a characteristic of clay soil?

- Has large air spaces
- Sticky when wet
- Low capillarity
- Spreads easily

34. Which of the following is a major component of environment?

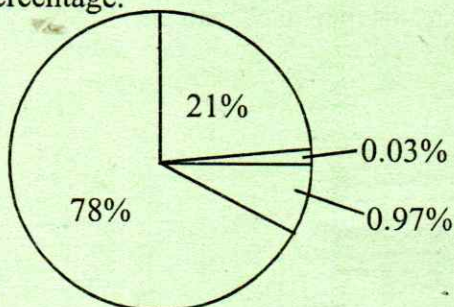
- Heat
- Banana tree
- Light
- Sound

35. The diagram below shows a set-up used to investigate a certain component of soil.



The component of soil that was investigated is

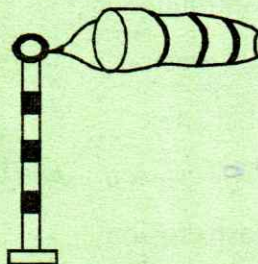
- A. living organisms
 B. organic matter
 C. air
 D. water
36. Which group of food given below is the most suitable in preventing kwashiorkor?
 A. Maize, peas, beans
 B. Milk, egg, meat
 C. Orange, kales, spinach
 D. Arrow root, yams, cassava
37. The pie chart below shows composition of air in the atmosphere in terms of percentage.



In which of the following process is the gas represented by 0.97% used?

38. Acid rain is formed when some gases dissolve in water. These gases are mainly produced by
 A. chemical sprays
 B. industrial fumes
 C. excess fertilizer
 D. untreated sewage

39. The diagram below shows a weather instrument.



Which one of the following statements is true when it is in use?

- A. When the sock points East, wind is blowing from West
 B. It works under the principle of matter has mass
 C. It measures speed of wind
 D. It rises when it is calm
40. The best control measure to create awareness against the spread of HIV and AIDS is by use of
 A. film
 B. newspaper
 C. billboards
 D. radio
41. Which one of the following groups consists of legal drugs?
 A. Tobacco, alcohol, khat
 B. Bhang, miraa, cocaine
 C. Alcohol, mandrax, Heroin

42. At what age is the last DPT vaccine given to infants?

- A. 6 weeks
- B. 9 months
- C. 14 weeks
- D. 10 weeks

43. Which type of soil erosion is caused by both wind and water?

- A. Sheet erosion
- B. Rill erosion
- C. Gully erosion
- D. Splash erosion

44. Liver cirrhosis is a disease caused by use of excessive consumption of

- A. alcohol
- B. miraa
- C. bhang
- D. tobacco

45. Which of the following shows a group of fibres crops ONLY?

- A. Flax, cotton, sisal
- B. Cotton, tea, coconut
- C. Sunflower, coffee, tea
- D. Sisal, cocoa, flax

46. Three of the following are useful fungi except

- A. yeast
- B. mushroom
- C. penicillium

47. Which of the following parasites CANNOT be controlled by spraying?

- A. Ticks
- B. Mites
- C. Hookworms
- D. Flea

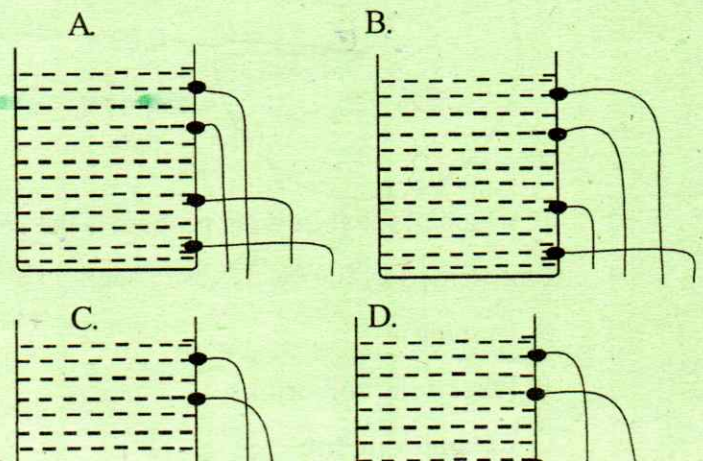
48. Given below are water pollutants. Which one is NOT?

- A. Oil spillage
- B. Acid rain
- C. Recycled sewage
- D. Farm chemicals

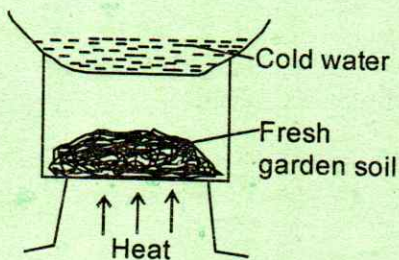
49. Which of the following factors DOES NOT affect sinking and floating?

- A. Shape
- B. Material
- C. Size
- D. Density

50. Which set-up best shows that pressure in liquids increases with depth?

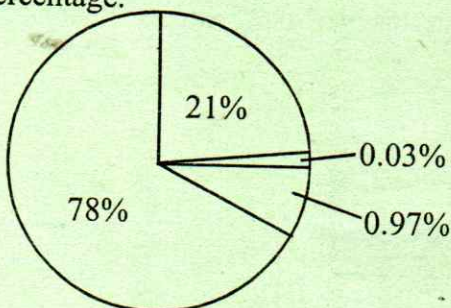


35. The diagram below shows a set-up used to investigate a certain component of soil.



The component of soil that was investigated is

- A. living organisms
 B. organic matter
 C. air
 D. water
36. Which group of food given below is the most suitable in preventing kwashiorkor?
 A. Maize, peas, beans
 B. Milk, egg, meat
 C. Orange, kales, spinach
 D. Arrow root, yams, cassava
37. The pie chart below shows composition of air in the atmosphere in terms of percentage.

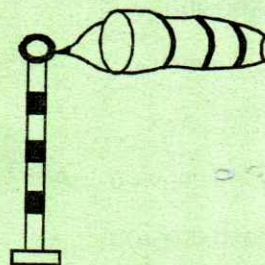


In which of the following process is the gas represented by 0.97% used?

- A. Burning
 B. Preserving soft drinks
 C. Extiguishing fire

38. Acid rain is formed when some gases dissolve in water. These gases are mainly produced by
 A. chemical sprays
 B. industrial fumes
 C. excess fertilizer
 D. untreated sewage

39. The diagram below shows a weather instrument.



Which one of the following statements is true when it is in use?

- A. When the sock points East, wind is blowing from West
 B. It works under the principle of matter has mass
 C. It measures speed of wind
 D. It rises when it is calm
40. The best control measure to create awareness against the spread of HIV and AIDS is by use of
 A. film
 B. newspaper
 C. billboards
 D. radio
41. Which one of the following groups consists of legal drugs?
 A. Tobacco, alcohol, khat
 B. Bhang, miraa, cocaine
 C. Alcohol, mandrax, Heroin