

DISTINCTION KCPE CONQUEROR



STANDARD EIGHT SECOND PREDICTION - 2020



TIME: 1HR 40MINS

SCIENCE

READ THESE INSTRUCTIONS CAREFULLY

1. You have been given this question booklet and a separate answer sheet. The question paper contains 50 questions.
2. Do any necessary rough work in this booklet.
3. When you have chosen your answer, mark it on the **ANSWER SHEET**, not in this question booklet.

HOW TO USE THE ANSWER SHEET

4. Use an ordinary pencil only.
5. Make sure you have written on the answer sheet.
YOUR INDEX NUMBER
YOUR NAME
NAME OF YOUR SCHOOL
6. By drawing a dark line inside the correct numbered boxes mark your full Index Number (i.e. School Code Number and the three-figure Candidate's Number) in the grid near the top of the answer sheet.
7. Do not make any marks outside the brackets [].
8. Keep the sheet as clean as possible and **DO NOT FOLD IT**.
9. For each of the questions 1-50 four answers are given. The answers are lettered **A, B, C, D**. In each case only **ONE** of the four answers is correct. Choose the correct answer.
10. On the answer sheet the correct answer is to be shown by drawing a dark line inside the box in which the letter you have chosen is written.

Example:-

In the question paper.

4. Which one of the following is NOT a controlled method of grazing?
- A. Zero grazing
 - B. Strip grazing
 - C. Herding
 - D. Tethering

The correct answer is **C. (Herding)**.

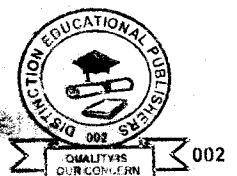
On the answer sheet

4. [A] [B] [C] [D] **14.** [A] [B] [C] [D] **24.** [A] [B] [C] [D] **34.** [A] [B] [C] [D]

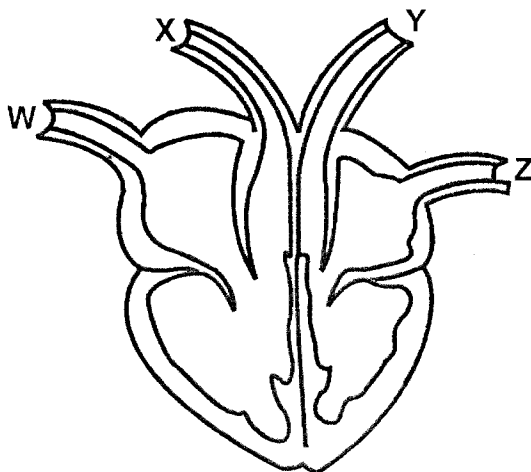
In the first set, the box with the letter C printed in it is marked.

11. Your dark line **MUST** be within the brackets.
12. For each question **ONLY ONE** bracket is to be marked in each of four brackets.

This Question Paper consist of 8 printed pages.



- The following are physical changes that occur during adolescence **except**
 - broadening of shoulders.
 - enlargement of breasts.
 - showing moodiness.
 - growth of beards.
- The diagram below shows the heart of a mammal.



The blood vessels of the heart that carry blood under high pressure are represented by the letter

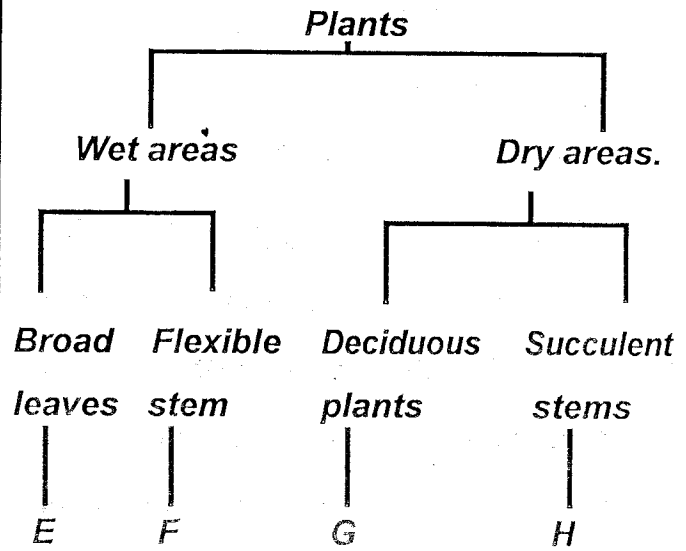
- X and Y
 - W and Z
 - W and X
 - Y and Z
- The following are function of the placenta **except**
 - facilitates exchange of food from the mother to the foetus.
 - produces hormones that stops menstruation.
 - protects the embryo from shock.
 - facilitates exchange of waste products from the foetus to the mother.

- Which one of the following is **not** true about breathing in?
 - The volume of the chest increases.
 - The diaphragm moves upwards.
 - The ribs moves upwards and outwards.
 - The lungs expand.

- Which of the following shows the **correct** number of teeth in the mouth of a child aged 12?

	<i>Incisors</i>	<i>Canine</i>	<i>Pre-molars</i>	<i>Molars</i>
A.	4	8	8	12
B.	8	8	12	4
C.	8	4	8	12
D.	8	4	8	8

- During a nature walk to investigate interdependence between plants, Std 7 pupils found some plants growing on barks of big trees. They concluded that the interdependence was
 - shade
 - support
 - habitat
 - food
- The chart below shows adaptation of plants to the environment.



Which two plants would be represented by E and H?

	<i>E</i>	<i>H</i>
A.	Water lily	Cactus
B.	Mangrove	Euphoria
C.	Papyrus	Cactus
D.	Arrow roots	Casuarina

8. A flower with few sticky pollen grains is **not** likely to have
- A. brightly coloured petals.
 - B. feathery stigmas.
 - C. pleasant smell.
 - D. small anthers
9. The following are ways of controlling weeds **except**?
- A. Mulching.
 - B. Uprooting.
 - C. Flooding.
 - D. Slashing.
10. Which one of the following is **not** a function of the stems?
- A. Transporting food to the leaves.
 - B. Some store food and water.
 - C. Transporting minerals salts and water.
 - D. Absorbing water and supporting the plants.
11. Which one of the following statements about counselling is **true**?
- A. Pre-test counselling help one to get ready to receive the results.
 - B. Counseling is only done after testing HIV and AIDS.

- C. Pre-test counselling is given before releasing the results.
- D. Post-test counselling is done after the test but before the results are released.

12. A patient was found to be having the following signs and symptoms.

- (i) *Prolonged cough.*
- (ii) *Loss of weight.*
- (iii) *Sweating at night.*
- (iv) *Fever.*

The disease with the signs and symptoms described above can be prevented in the following ways **except**?

- A. Eating a well balanced diet.
- B. Immunization.
- C. Living in a well-ventilated house.
- D. Drinking boiled milk.

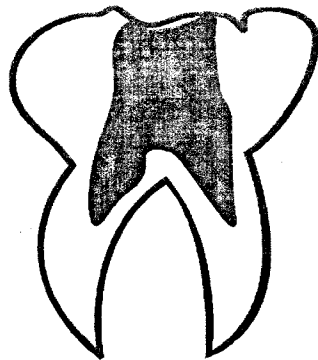
13. Which one of the following is a sign of soft chancre?

- A. Pain in the joints and mild fever.
- B. Irregular shaped sore.
- C. Lower abdominal pains.
- D. Painful sensation when urinating.

14. Which one of the following is **not** a safety precaution when handling chemicals at home?

- A. Storing chemicals in a lockable cabinet.
- B. Labelling chemical containers well.
- C. Spraying against the winds.
- D. Throwing empty containers into a pit latrine.

15. The diagram below shows a problem related to teeth.



The teeth problem shown above is.

- A. plague
 - B. bleeding gum
 - C. tooth decay
 - D. cavity
16. The following are some characteristic of certain animals.

- (i) *Live partly in water.*
- (ii) *Breath through lungs.*
- (iii) *Lay unfertilized eggs.*
- (iv) *Varying body temperature.*

Which animals has the above characteristic?

- A. Duck billed platypus.
 - B. Shark.
 - C. Toad.
 - D. Crocodile
17. The **main** reason for including concentrates in the food for animals is to
- A. increase production of the animals.
 - B. supplement other feeds.
 - C. prevent the animal from diseases.
 - D. provide energy to the animals.

18. Which one of the following parasites attack all domestic animals?

- A. Mites.
- B. Louse.
- C. Tick.
- D. Tsetsefly.

19. Which one of the following animals has a different type of movement from the others?

- A. Bat.
- B. Housefly.
- C. Mosquito.
- D. Chicken.

20. Which of the following methods is the **best** to control both external and internal parasites in livestock?

- A. Regular deworming.
- B. Spraying.
- C. Rotational grazing.
- D. Dipping.

21. Which one of the following pairs consist only of components of environment that make use of oxygen?

- A. Animals and plants.
- B. Soil and animals.
- C. Plants and water.
- D. Air and plants.

22. Which of the following pairs of food is preserved by smoking, salting and drying?

- A. Grains and fish.
- B. Vegetables and beans.

C. Mutton and beef.

D. Peas and meat.

23. Which one of the following groups of food stuffs consists of a balanced diet?

A. Yams, kales, irish potatoes.

B. Bacon, green grams, groundnuts.

C. Chapati, mutton, liver.

D. Carrots, termites, green banana.

24. A child was found with the following signs and symptoms.

(i) *Pale skin.*

(ii) *White eyes and fingers nails.*

(iii) *Light headed and dizzy.*

The child was most likely to be suffering from?

A. Rickets.

B. Anaemia.

C. Marasmus.

D. Kwashiorkor.

25. Three of the following depend on size of soil particle **except**?

A. Roughness or smoothness of the soil.

B. Ability of the soil to allow water pass through it.

C. Ability of the soil hold water.

D. Soil organic matter.

26. Which one of the following statements about organic manure is **not** true? They

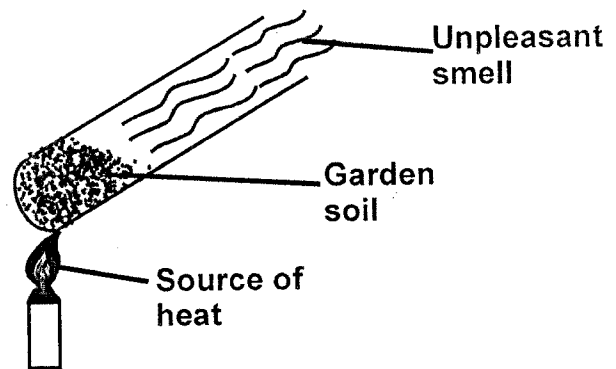
A. can spread diseases.

B. cause pollution of the soil.

C. improve soil aeration.

D. release the nutrients for along time.

27. Standard five pupils set-up the experiment as shown below.



What were they investigating?

A. Soil contains organic matter.

B. Soil contains living organisms.

C. Soil contains air.

D. Soil contains water.

28. Which two components of air make about 78% when combined?

A. Nitrogen and rare gases.

B. Oxygen and carbon dioxide.

C. Oxygen and rare gases.

D. Nitrogen and carbon dioxide.

29. The following are factors that affect the rate of dissolving of a solid in a liquid **except**?

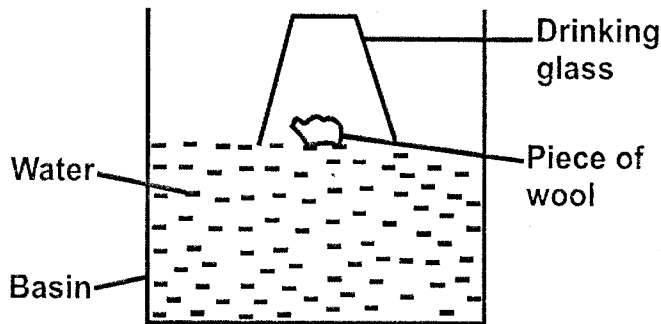
A. Temperature

B. Size of the solid

C. Evaporation

D. Type of the solid

30. The diagram below represents a set up that can be used to demonstrate a certain property of matter.



When the glass is pressed down until it touches the bottom of the basin, water

- A. enters the glass and the piece of wood sinks at the bottom of the basin.
 B. does not enter the glass and the piece of wood rests at the bottom of the basin.
 C. enters the glass and the piece of wood floats on the water.
 D. does not enter the glass and the piece of wood sticks at the bottom of the glass.
31. Which lists comprises of substances that are in the same state of matter?
 A. Chalk dust, ugali, tooth paste.
 B. Steam, ice, wax.
 C. Milk, porridge, methylated spirit.
 D. Water vapour, milk, candle wax.
32. All the following are importance of plants **except**
 A. purify the air
 B. cause decomposition
 C. provide shelters for animals
 D. provide animals with food.

33. Pupils brought the following materials during a Science lesson.

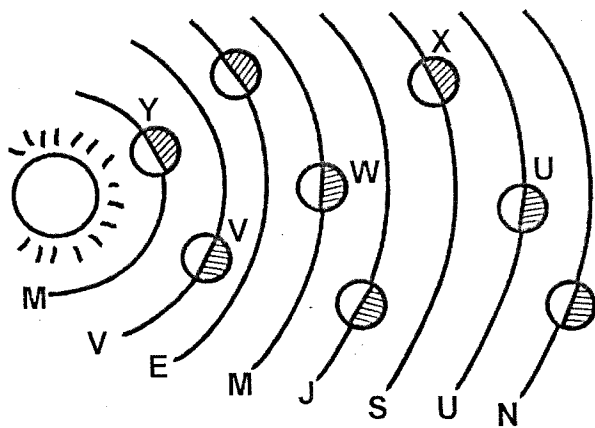
(i) **Candle.** (ii) **Torch.**
 (iii) **Matches.** (iv) **Lamp**

What were they most likely to be learning about?

- A. Heat transfer.
 B. Sources of light.
 C. Types of light.
 D. Sources of heat.
34. Which one of the following activities **cannot** lead to water pollution?
 A. Applying excessive fertilizers.
 B. Releasing animals wastes into water sources.
 C. Oil spillage.
 D. Releasing treated industrial waste into water sources.
35. Which one of the following ways will help to prevent the spread of cholera?
 A. Covering pit latrines.
 B. Wearing gumboots when walking in stagnant water.
 C. Filtering drinking water.
 D. Spraying chemicals in stagnant water.
36. Which one of the following is **not** a domestic use of water?
 A. Drinking.
 B. Cooking food.
 C. Bathing.
 D. Watering animals.

37. Which one of the following statements about simple tools is **incorrect**?
- Tools should be stored in a clean dry place.
 - Tools with cutting edges should be sharpened regular.
 - Once a tool handle get broken should be thrown away.
 - Tools should be cleaned after use.
38. When balancing on a seesaw, the heavier person can balance a lighter one when
- the lighter person stand on the sea saw.
 - the heavier person move closes to the pivot.
 - the two people move equal distance.
 - the heavier person move away from the pivot.
39. Birds raise their feathers on a cold day mainly to
- get more heat from the surrounding.
 - allow even distribution of heat in the body.
 - avoid losing heat.
 - make them look larger.
40. Which one of the following activities requires **least** amount of friction?
- Walking up a hill.
 - Vehicles running on the road.
 - Lighting a match stick.
 - Closing the door.
41. A rainbow is observed when there is
- light rays passing through rain drops.
 - bright sunshine and moist air.
 - frog and bright light.
 - rainfall and bright sunshine at the same time.
42. Which one of the following should **not** be avoided during thunderstorms?
- Sheltering under trees.
 - walking in open field.
 - Squatting on the ground.
 - Carrying metallic and sharp pointed objects.
43. Standard 5 pupils collected the following materials.
- Rubber band.**
 - Thin walled glass bottle.**
 - Ink.**
 - Cork.**
 - Water.**
 - Wooden stand.**
 - Inner tube of ball pen.**
 - A beaker.**
- Which one of the following instruments were they likely to make?
- Air thermometer.
 - Raingauge.
 - Wind sock.
 - Liquid thermometer.

44. The diagram below shows the solar system.



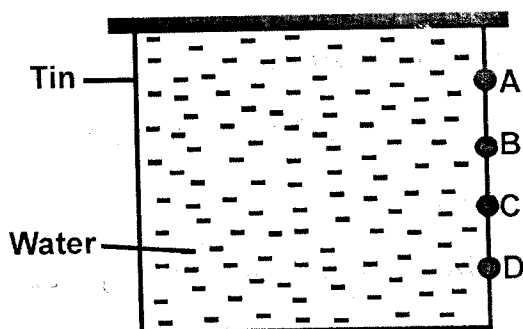
Which of the following shows the **correct** planet represented by U, V, W and X respectively?

	U	V	W	X
A.	Mercury	Earth	Jupiter	Neptune
B.	Uranus	Venus	Mars	Saturn
C.	Uranus	Saturn	Mars	Venus
D.	Venus	Mars	Saturn	Uranus

45. The following are all methods of heat transfer **except**

- A. Conduction.
- B. Radiation.
- C. Convection.
- D. Contraction.

46. Std 5 pupils performed an experiment shown below.



When the holes are open, which one will throw water nearest to the tin?

- A. D
- B. C
- C. B
- D. A

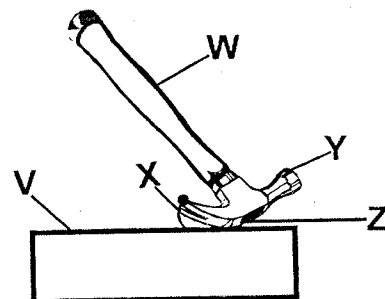
47. Which one of the following statements is **true** about a moving object?

- A. It keeps on moving even if a force acts on it.
- B. It continues moving in a straight line unless a force acts on it.
- C. It does not require any force in order to increase its speed.
- D. It keeps reducing its speed even if no force acts on it.

48. Which of the following materials are **correctly** classified as magnetic and non-magnetic?

	Magnetic	Non-magnetic
A.	Razor blade	A piece of copper wire
B.	Silver coin	Office staples.
C.	Tin lid	Nail
D.	Zinc	Steel wool

49. The diagram below shows a claw hammer in use.



Which letters represents load, fulcrum and effort?

	Load	Fulcrum	Effort
A.	V	Y	W
B.	W	Z	X
C.	V	X	Z
D.	X	Z	W

50. Which one of the following is **not** an electrical appliance used at home?

- A. Refrigerator.
- B. Television.
- C. Blow dry.
- D. Electric heater.