

DISTINCTION SCHOOL BASED ASSESSMENT TEST

STANDARD EIGHT - 2020

8

PREMIER

SCIENCE

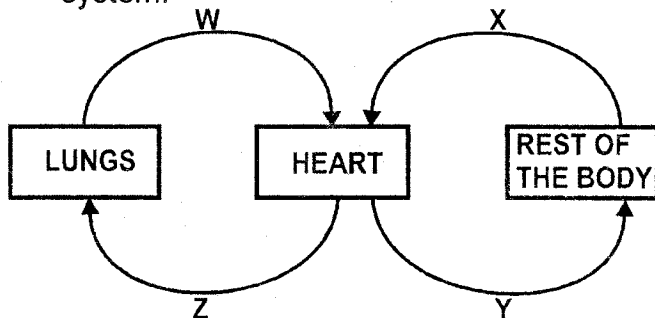
Time: 1Hr 40mins



- Which one of the following statements below is **not** correct about fertilization in human beings?
 - It occurs in fallopian tubes.
 - It is an internal fertilization.
 - It is the fusion of ovum and the sperm.
 - Implantation takes place before fertilization.
- The membrane that covers the foetus during foetal development is known as
 - placental
 - umbilical cord
 - amniotic sac
 - amniotic fluid
- Which one of the wastes below is **not** correctly matched with the organ that removes it?

	Wastes	Organ
A.	Urea	Lungs
B.	Sweat	Skin
C.	Lactic acid	Skin
D.	Nitrogenous waste	Kidney

- In which part of digestive system is iron and calcium minerals absorbed?
 - Stomach
 - Colon
 - Duodenum
 - Small intestines
- When inhaling, the _____
 - ribs move inwards and downwards
 - diaphragm relaxes
 - air space in the chest reduces
 - air leaves the lungs.
- The diagram below shows blood circulatory system.

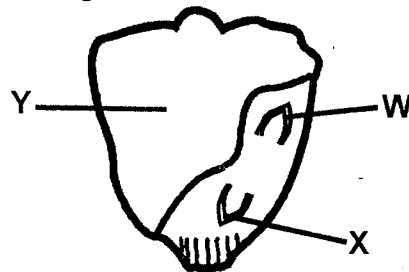


- Which pairs of blood vessels above carry oxygenated blood?
- W and X
 - X and Z
 - W and Y
 - Z and Y

- Which mixture below can **best** be separated by use of wind?
 - Salt and sugar.
 - Flour and sawdust.
 - Sand and maize.
 - Beans and husks.
- Which one of the following sexually transmitted infections is **not** caused by bacteria?
 - HIV and AIDS.
 - Syphilis.
 - Gonorrhoea.
 - Chancroid.
- The following are stages during birth process but **not** in their correct order.
 - Release of afterbirth.
 - Contraction of the uterus.
 - Release of amniotic fluid.
 - Tie and cut umbilical cord.
 - Cervix dilate.

Which is the **correct** order of the stages above?

 - (v), (ii), (iii), (iv), (i)
 - (ii), (v), (iv), (iii), (i)
 - (ii), (v), (iii), (iv), (i)
 - (ii), (v), (i), (iii), (iv)
- The diagram below shows a maize grain.



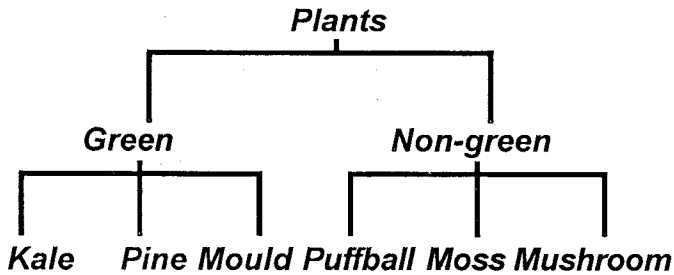
Name the parts marked Y, W and X.

	Y	W	X
A.	Endosperm	Radicle	Plumule
B.	Endosperms	Embryo	Radicle
C.	Cotyledon	Plumule	Radicle
D.	Endosperm	Plumule	Radicle

- Which one of the following is **not** a waterborne disease?
 - Malaria
 - Bilharzia
 - Cholera
 - Typhoid
- During a nature walk a pupils saw a weed which had thorns on leaves and stem with yellow ripe fruits. The weed was **likely** to be;
 - Mexican marigold
 - Sodom apple
 - Thorn apple
 - Wandering jew

13. Which one of the following is **not** a function of a placenta?
- Facilitates the removal of wastes products from foetus to the mothers.
 - Facilitate food passage from the mother to the foetus.
 - Facilitate the exchange of gases between mother and father.
 - Allow free movement of the foetus.

14. The chart below shows classification of plants.



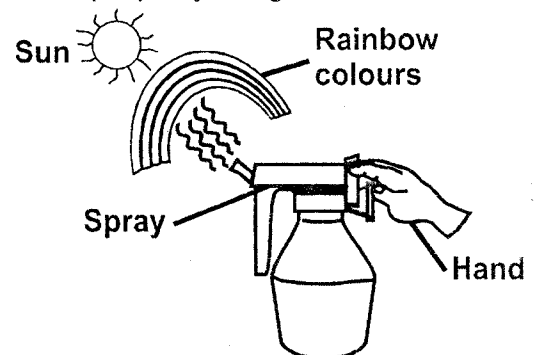
Which plants were **wrongly** classified?

- Kale, moss.
 - Pine, mould, mass.
 - Mould, moss.
 - Mould, mushrooms.
15. The **most** effective media for campaigns against the spread of HIV and AIDS in the community is
- radio
 - leaflets
 - internet
 - newspapers
16. Which one of the following types of soil erosion is most **likely** to eventually develop on the animal paths?
- Sheet erosion.
 - Gulley erosion.
 - Rill erosion.
 - Splash erosion.
17. The type of teeth which has three roots is also
- chisel shaped
 - sharp and pointed
 - used for grinding food
 - part of milk teeth
18. At which stage of HIV infection does the person test positive but there are no signs?
- Windows stage.
 - Incubation stage.
 - Symptomatic stage.
 - Full blown Aids.
19. Among the following animals which one lays unfertilized eggs, has moist skin and lives partly on land and in water?
- Gecko.
 - Whale.
 - Duckbilled platypus.
 - Newt.

20. Which group of crops consists of cereals only?
- Maize, beans, yams.
 - Oats, barley, sorghum.
 - Beans, peas, green grams.
 - Simsim, groundnuts, avocado
21. The bird whose beak is drawn below is **likely** to feed on



- grains
 - flesh
 - nectar
 - filtered food from water
22. Which one of the following is **likely** to be a feeding adaptation in animals that feed of flesh?
- Horny pad at the front of upper jaw.
 - Presence of diastema.
 - Long curved incisor teeth.
 - Presence of carnassial teeth.
23. Which one of the following is **not** a sign of ill health in livestock?
- Coughing.
 - Loss of weight.
 - Glossy skin coat.
 - Retarded growth.
24. Plants depend on other plants for all the following **except**
- pollination
 - support
 - habitat
 - food
25. Which one of the following is **not** a way of conserving water?
- Mulching.
 - Harvesting rain water.
 - Digging terraces and making gabions.
 - Practising drip irrigation.
26. The set-up below was used to investigate a certain property of light.

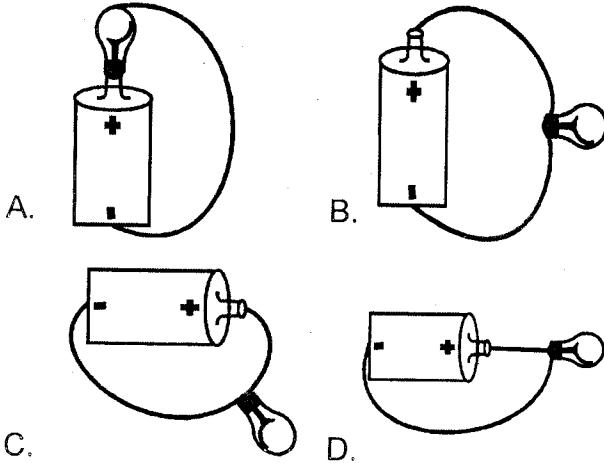


- Which property was being investigated?
- Reflection of light.
 - Making a rainbow.

- C. Refraction of light.
- D. Dispersion of light.

27. Which disease below is caused by lack of minerals and vitamins?
- A. Rickets
 - B. Anaemia
 - C. Marasmus
 - D. Kwashiorkor

28. Which one of the simple circuit below will light?



29. Which animals below is **not** matched with its way of movement?

	Animal	Movement
A.	Bat	Flying
B.	Snail	Swimming
C.	Caterpillar	Crawling
D.	Grasshopper	Leaping

30. Which one of the following is the **correct** order of flow of blood from lungs and back?

- A. Lungs → pulmonary vein → heart → aorta → body → venacava → heart → pulmonary artery.
- B. Lungs → pulmonary artery → aorta → body → venacava → heart
- C. Heart → aorta → body → venacava → heart → pulmonary artery → lung
- D. Lungs → heart → aorta → body → venacava → heart → lungs

31. The following are ways of maintaining simple tools. Which pair consists of practices done to all tools?

- A. Cleaning after use and sharpening
- B. Proper use and sharpening
- C. Oiling and cleaning before use.
- D. Proper storage and proper use.

32. The force that resists motion can be reduced by

- A. treading tyres
- B. pouring coarse sand on flours
- C. streamlining bodies
- D. roughening the surface.

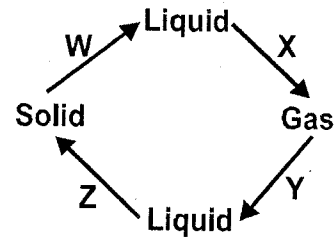
33. Which one of the following is the reason for increasing iron minerals in the diet of a lactating mother?

- A. To make blood for the baby.
- B. To replace blood lost during birth.
- C. To prevent the infections.
- D. Helps in milk production.

34. Proper lighting of the house is important in many ways **except**

- A. sleep comfortably
- B. safety
- C. discourage pest
- D. read comfortably

35. The diagram below shows the processes of change of states of matter.



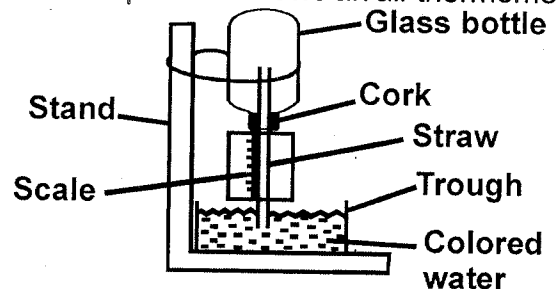
Which two processes involve absorption of heat from the surrounding?

- A. W and X
- B. Y and Z
- C. W and Z
- D. X and Y

36. Which one of the following is **not** an importance of water in the diet?

- A. Cool the body.
- B. Prevent constipation.
- C. Help in blood making.
- D. Help in food digestion.

37. The set-up below shows an air thermometer.



Which statement is **correct** about the instrument?

- A. When the temperature rises the level of water in the straw drops.
- B. It works under the principle that liquids expand when heated.
- C. The straw should be wide enough for more accuracy.
- D. When the temperature drops the level of water in the trough rises.

38. Which part of the alimentary canal does **not** allow the production of digestive juice?

- A. Mouth.
- B. Stomach.
- C. Small intestine.
- D. Large intestines.

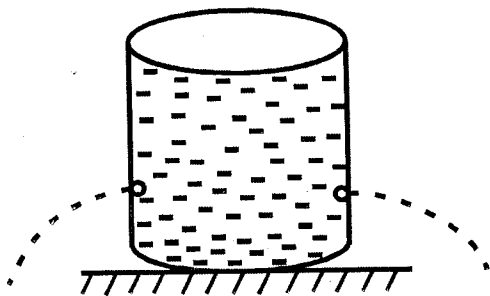
39. Grade 4 pupils found soil with the following characteristics.

- (i) *Good drainage.*
- (ii) *Coarse particles.*
- (iii) *Low capillarity.*

The soil above is likely to be

- A. clay soil
- B. sand soil
- C. loam soil
- D. mixture of loam and clay

40. The diagram below was used as a set-up by Std 5 pupils.



The set-up demonstrates that

- A. pressure in liquid increases with depth
- B. liquids exert pressure on two sides
- C. pressure in liquids is equal at the same depth
- D. liquids exerts pressure equally at all depths.

41. The smallest and the largest planet respectively in the solar system are

- A. Jupiter and Mercury.
- B. Venus and Jupiter.
- C. Mars and Saturn.
- D. Mercury and Jupiter.

42. Which one of the following liquids will form one layer when mixed in one glass bottle?

- A. Kerosene and cooking oil.
- B. Fresh milk and kerosine.
- C. Water and cooking oil.
- D. Cooking oil and spirit.

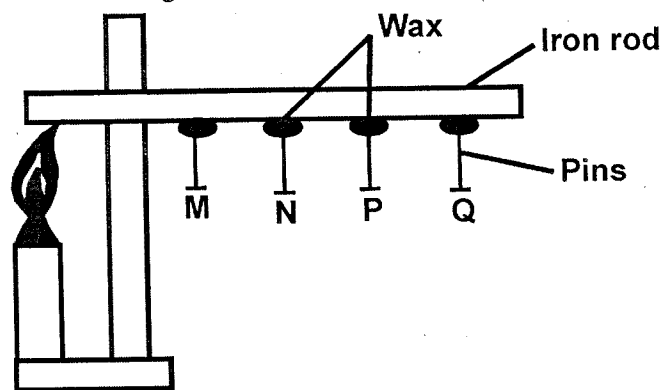
43. Which one of the following groups consists of substances with definite mass but no definite shape?

- A. ink, cooking fat, ice.
- B. as, oxygen.
- C. toothpaste, air, oil.
- D. flour, soil, chalk dust.

44. The clouds that are found high in the sky

- A. are dark grey in colour
- B. are rain-bearing
- C. cover the whole sky
- D. appear like bundles of cotton

45. The diagram below was used to investigate;



- A. radiation in iron rods.
- B. conduction and radiation.
- C. convection in matter.
- D. conduction in matter.

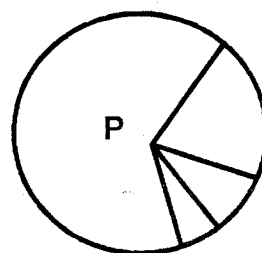
46. Which one of the following physical changes take place in girls **only** during adolescence stage?

- A. Pimples may appear on the face.
- B. Menstrual flow starts.
- C. Release of sex cells.
- D. Increase in weight and height.

47. Which of the following diseases is a child immunized against at the age of 6 and 4 weeks?

- A. Tuberculosis, tetanus, polio.
- B. Yellow fever, diphtheria, measles.
- C. Poli, whooping cough, diphtheria.
- D. Polio, tetanus, measles.

48. Std 6 pupils stated the uses of the gas marked **P** in the air composition chart drawn below.



Which statement was **correct**?

- A. Used by beans to make proteins.
- B. Used in light bulbs.
- C. Used by green plants to make starch
- D. Puts out fire.

49. Which materials below is magnetic?

- A. Aluminium foil.
- B. Zinc plate.
- C. Steel wool.
- D. Copper fillings.

50. Which one of the following is **not** an animal fat?

- A. Butter
- B. Cacon
- C. Cheese
- D. Margarine