



**SCIENCE**

# PRECIOUS SERIES 2021

STEPPING - IN

6

001

**READ THESE INSTRUCTIONS CAREFULLY**

1. You have been given this question paper and a separate answer sheet. The question paper contains 50 questions.

2. Make sure that you have written on the answer sheet

(i) Your name

(ii) Name of your school

**TIME: 1HR 40MINS**

1. The other name for the windpipe is

- A. foodpipe                      B. trachea  
C. oesophagus                  D. gullet

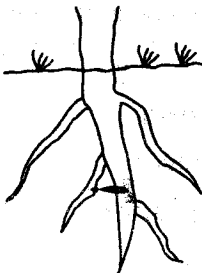
2. The amount of medicine one should take when sick is called

- A. overdose                      B. Dosage  
C. first aid                        D. vaccine

3. The human teeth that help to tear flesh are the

- A. incisors                        B. canines  
C. premolars                      D. molars

4. The root system shown below belongs to one of the following plants. Which one?



- A. Maize                            B. Wheat  
C. Beans                            D. Millet

5. Which one of the following is **not** a nutritional deficiency disease?

- A. Anaemia                        B. Malaria  
C. Rickets                         D. Marasmus

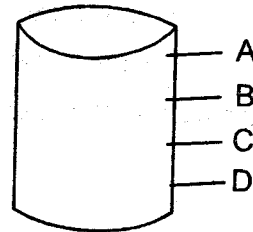
6. The following are sources of light **except**;

- A. moon                            B. stars  
C. sun                                D. firefly

7. Another name for curative medicine is

- A. antibiotics                      B. vaccines  
C. painkillers                      D. supplement

8. The **best** point to fix the tap on the tank below is

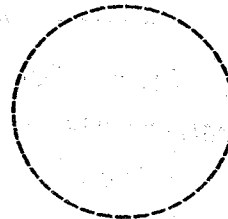


- A. A                                      B. B  
C. C                                      D. D

9. Which one of the following **does not** affect floating and sinking?

- A. Size                                B. Shape  
C. Material                          D. Weight

10. The phase of the moon shown below is;



- A. crescent                        B. full moon  
C. new moon                      D. gibbous

11. Which one of the following is a characteristic of all animals?

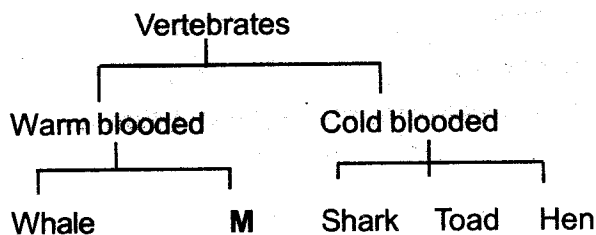
- A. They are warm blooded  
B. They are vertebrates  
C. They are cold blooded  
D. They all die

12. Which one of the following is **not** a physical change during adolescence?

- A. Appearance of pimples on the face  
B. Attraction towards the opposite sex  
C. Onset of menstruation  
D. Broadening of shoulders

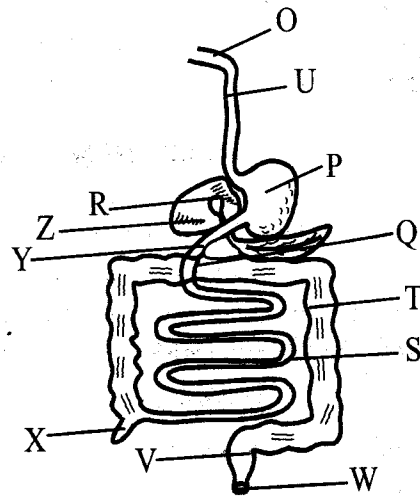
13. Three of the following groups of animals are vertebrates. Which one is **not**?
- A. Birds                                      B. Reptiles  
C. Insects                                     D. Mammals
14. The extent to which a type of soil feels between fingers is called
- A. soil capillarity                            B. joint drainage  
C. soil texture                                D. water retention
15. The ability of soil to allow water to pass through it is called
- A. drainage                                    B. capillarity  
C. texture                                      D. water retention
16. The following are parts of the male reproductive system **except**;
- A. testis                                        B. penis  
C. urethra                                      D. oviduct

**Use the flow chart below to answer questions 17 - 18**



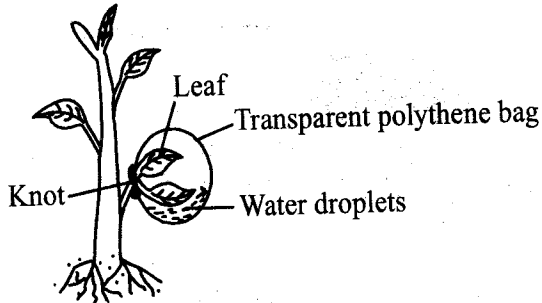
17. Which animal is wrongly classified?
- A. Whale                                      B. Shark  
C. Hen                                         D. Toad
18. Which animal can fit in the part marked **M**?
- A. Cat                                         B. Tilapia  
C. Crocodile                                 D. Frog
19. The **best** method of controlling weeds is by
- A. mulching                                   B. slashing  
C. digging them out                        D. using herbicides
20. We get mohair from
- A. sheep                                       B. cow  
C. pigs                                         D. goat
21. Which one of the following fluids **does not** transmit HIV/AIDS?
- A. Semen                                      B. Blood  
C. Urine                                        D. Breast milk

**Use the diagram below to answer questions 22 - 23.**

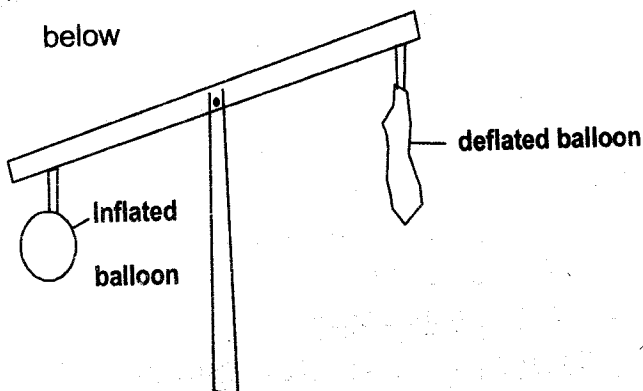


22. Absorption of digested food takes place in the part marked
- A. P    B. S  
C. W    D. T
23. In which parts is bile juice produced and stored respectively?
- A. Z, R                                         B. P, R  
C. O, P                                         D. S, T
24. Which one of the following changes of state in matter take place as a result of a decrease in temperature?
- A. Melting and evaporation  
B. Conduction and melting  
C. Freezing and condensation  
D. Evaporation and freezing
25. In which of the following is water used for recreation?
- A. Watering plants                         B. Cooking  
C. Swimming                                 D. Making fountains
26. In making cooking utensils, poor conductors of heat are used as
- A. conductors                                 B. metal lids  
C. radiators                                 D. stirring rods
27. Sufurias, ships and boats easily float on water because of their
- A. volume                                      B. density  
C. weight                                       D. shape

28. Mr. Hesbon led pupils in Upendo primary school to set up the following experiment in their orchard. Which process in plants were they investigating?



- A. Transpiration      B. Absorption  
C. Photosynthesis    D. Transportation
29. Which one of the following substances has a definite mass and volume but an indefinite shape?
- A. Water vapour      B. Water  
C. Sand                D. Flour
30. Which one of the following statements is true about clouds that indicate heavy rainfall?
- A. They are dark grey in colour  
B. They have a flat bottom  
C. They appear high in the sky  
D. They resemble cotton wool
31. Mr. Ratemo with his class six pupils from Brilliant Academy carried out the experiment below



- The class concluded that
- A. air occupies space  
B. air expands when heated  
C. air has mass  
D. air has a definite volume

32. Which one of the following materials is **not** an insulator?

A. Rubber                      B. Cloth  
C. Iron                         D. Plastic

33. The type of soil that retains the highest amount of water

A. has large air spaces  
B. is the best for construction  
C. has a rough texture  
D. has small particles

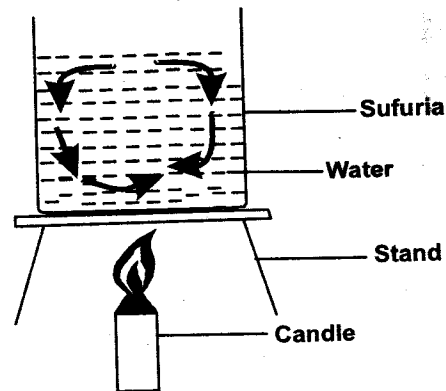
34. The unit for measuring small quantities of mass is the

A. tonne                        B. kilogram  
C. centimetre                D. gram

35. Which one of the following shows the **correct** order of the changes of state in matter?

A. Solid → Liquid → Gas  
B. Gas → Solid → Liquid  
C. Liquid → Solid → Gas  
D. Solid → Gas → Liquid

36. The experiment below was carried out by Simon a std 6 pupil;



He was investigating

- A. convection in air  
B. convection in liquids  
C. conduction in solids  
D. water is a good conductor of heat

37. Marasmus is caused by

A. lack of proteins in the body  
B. lack of carbohydrates in the body  
C. lack of a balanced diet  
D. lack of enough food in the body

38. One of the following groups of crops consist of legumes only. Which one is it?

- A. Coconut, cassava, beans
- B. Beans, groundnuts, peas
- C. Sisal, coconut, bananas
- D. Sunflower, palm, coconut

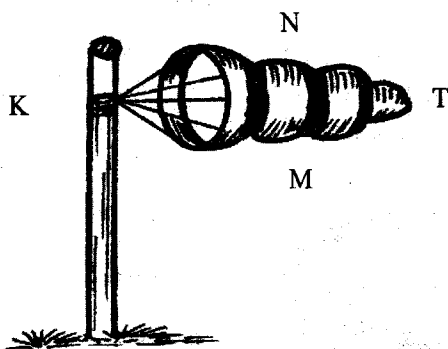
39. Which one of the following is **not** a function of plant leaves?

- A. Carrying out photosynthesis
- B. Absorption of water
- C. Losing excess water
- D. Breathing

40. Which one of the following **not** a source of water?

- A. Rain
- B. River
- C. Sea
- D. Pipe

41. The diagram below shows a weather measuring instrument;



From which direction marked **K, M, N, T** is the wind blowing from?

- A. N
- B. M
- C. K
- D. T

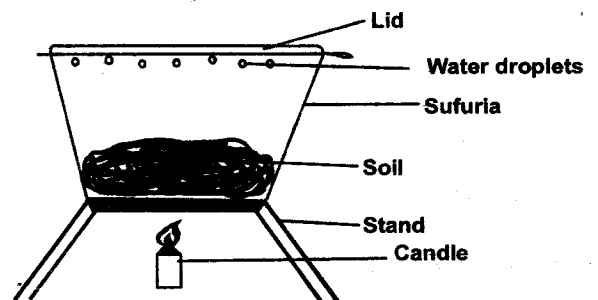
42. Which one of the following is a green non-flowering plant?

- A. Mould
- B. Onion
- C. Sisal
- D. Moss

43. When people talk all over in the market at the same time, they produce

- A. noise
- B. soft sound
- C. melodious sound
- D. loud sound

44. Mr. Yobesh and his class set up the following experiment;



The learners concluded that soil has

- A. air
- B. water
- C. living organisms
- D. humus

45. The function of fibre in the human diet is to

- A. transport digested food
- B. provide the body with nutrients
- C. prevent constipation
- D. help in digestion of food

46. Which one of the following is a useful non-green plant?

- A. Yeast
- B. Ringworm
- C. Algae
- D. Mould

47. In order for two pupils of varying masses to balance on a see-saw, the heavier pupil should

- A. sit far from the centre
- B. sit closer to the centre
- C. sit at an equal distance from the centre as the lighter pupil
- D. sit at the centre

48. Which one of the following measures will not prevent the spread of corona?

- A. Eating alot of fruits
- B. Observing social distance
- C. Wearing a mask
- D. Washing hands often

49. Heat from the sun reaches us through

- A. conduction
- B. convection
- C. radiation
- D. expansion

50. Which one of the following is the **most** dangerous stage of HIV/AIDS?

- A. Incubation
- B. Window
- C. Full blown
- D. Symptomatic