

BUTERE MUMIAS EVALUATION PAPER

STD 8 TERM II-2020

SCIENCE



- You have been given this question booklet and a separate answer sheet.
This question booklet contains 50 questions.
- Do any necessary rough work in this booklet.
- When you have chosen your answer, mark it on the ANSWER SHEET, not in this question booklet.

HOW TO USE THE ANSWER SHEET

- Use only an ordinary pencil.
- Make sure that you have written on the answer sheet:

YOUR INDEX NUMBER

YOUR NAME

NAME OF YOUR SCHOOL

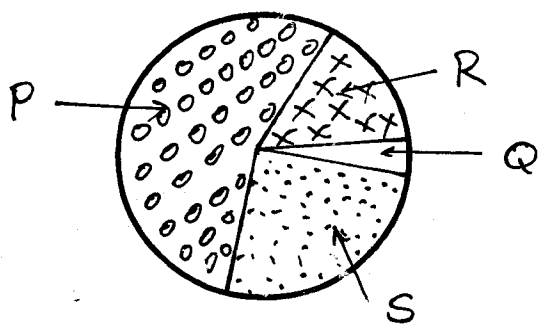
Time: 1hr 40min

- Three of the following activities take place during breathing in. Which one **does not**?
A. Pressure in the chest cavity increases
B. The volume of the chest cavity increases
C. The lungs expand
D. Ribs move-upwards and outwards
- The following happens during hibernation of animals **except**
A. animal becomes inactive
B. uses stored fat as food
C. moves alot
D. does not move
- The following are stages of HIV infection.
(i) window stage
(ii) full blown
(iii) symptomatic
(iv) incubation

Which of the following shows correct order in which they happen?

- A. (i), (iv), (iii), (ii) B. (i), (iii), (iv), (ii)
C. (iv), (i), (iii), (ii) D. (ii), (iv), (iii), (i)

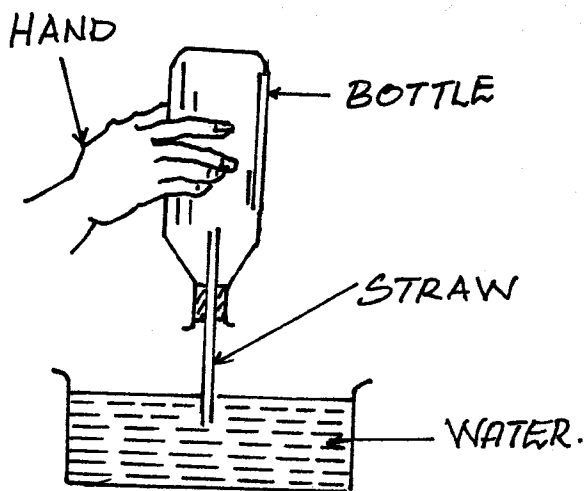
The chart below represent approximate representation of composition of air.



- Which portion represent a gas which is necessary for the germination of seeds?
A. Q B. R
C. P D. S
- Which one of the following animal feeds consists of proteins **only**?

- A. Clover, glycerine, desmodium
B. Oats, maize, lucern
C. Sweet potato vines, sugarcane, beets, kikuyu grass
D. Rhodes grass, napier grass, oats

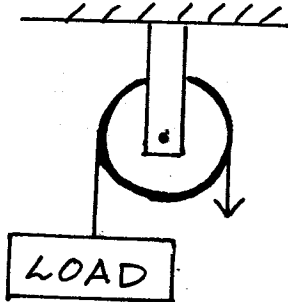
Below is a setup performed by a certain pupil in a hot sunny day.



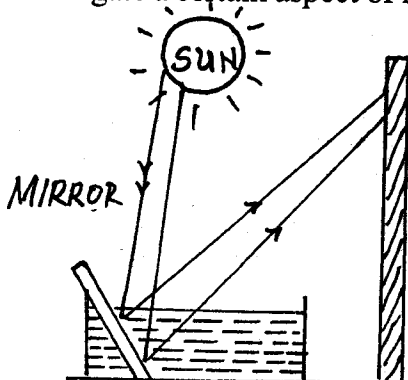
- What observation did he make?
A. The water got heated
B. The hand got burnt
C. The bottle broke because of heat
D. Bubbles were seen coming out of the straw
- Which one of the following is **not** a quality of breast milk that makes it suitable for infants?
A. It forms a balanced diet
B. It is thicker than other types of milk
C. It is available at the right temperature for infants
D. It is free from much contamination
- Which of the following consists **only** of non-magnetic materials?
A. Brass, tin, nickel, steel
B. Iron, cobalt, nickel, steel
C. Aluminium, copper, brass, silver
D. Glass, wood, paper, iron

9. Which one of the following is a **common** physical change to both boys and girls?
- Broadening of hips
 - Broadening of shoulder
 - Breaking of voice
 - Development of acne
10. Which one of the following lists consists of substances that **cannot** be separated by either filtration or sieving?
- Sugar, salt, soda ash
 - Sand, salt, sugar
 - Sugar, soil, salt
 - Soda ash, sawdust, soil

Study the single fixed pulley below.

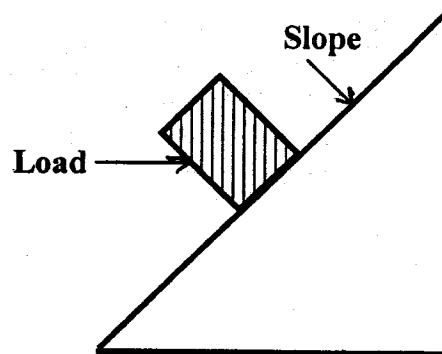


11. Which of the following statements is **false** about it?
- It changes direction of force
 - It increases amount of work done
 - Load moves the same distance as effort
 - The effort applied is equal to the load
12. The **main** reason why people are encouraged to use an improved jiko is that
- it is more expensive
 - it helps conserve forests
 - it is easily made from locally available materials
 - it does not pollute air
13. Which one of the following consists of storage pest **only**?
- Cutworms, weevils, moles
 - Rats, weevils, moth
 - Armyworm, weevil, moth
 - Moth, aphid, stalkborer
14. The diagram below shows a setup used to investigate a certain aspect of light.



The aspect being investigated is

- reflection of light
 - making a rainbow
 - how light travels
 - refraction of light
15. The following are ways of maintaining farm tools **except**
- cleaning after use
 - greasing or oiling
 - cleaning before use
 - sharpening the cutting tools
16. The diagram below shows how a load is lifted more easily.



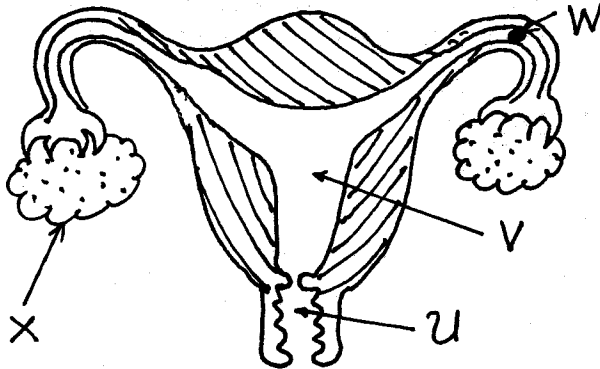
The slope make work easier by

- decreasing the load
 - increasing the effort arm
 - decreasing the load arm
 - changing effort direction
17. The **best** way of handling chemical tins at home after using the container is to
- bury deep into the ground
 - throw in a river
 - throw in a pit latrine
 - recycle
18. Which one of the following soil conservation method is applicable in a flat farm?
- Gabion
 - Terracing
 - Planting cover crops
 - Contour farming
19. Which one of the following is a way of removing temporary hardness of water?
- Sieving
 - Boiling
 - Use of chlorine
 - Warming
20. The **best** way of preventing the spread of Cholera is
- innoculate people with Cholera vaccine
 - collect and burn all rubbish containing Cholera germs
 - give patients medicine
 - spray insecticide to kill housefly
21. Which one of the following is a characteristic of seeds dispersed by wind?
- Have hooks
 - Have wings

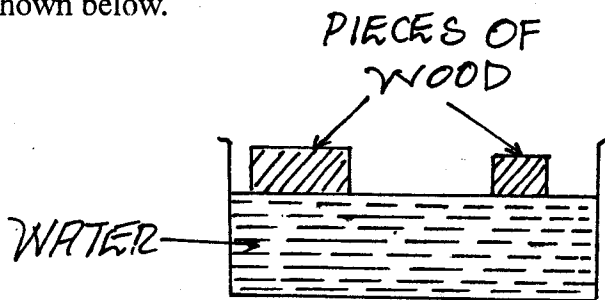
- C. Have air space in between
- D. Are edible

22. Which of the following is **not** a sign of ill-health in animals?
- A. Reduced yield
 - B. Coughing
 - C. Retarded growth
 - D. Glossy skin

Below shows the female reproductive system.



23. Which parts have the same function as ovary of a flower?
- A. X and W
 - B. U and W
 - C. X and U
 - D. V and U
24. The following are groups of cash crops. Which one is **not**?
- A. Legumes
 - B. Fibres
 - C. Oil crops
 - D. Beverages
25. Which of the following does **not** help to control tooth decay?
- A. Eating cakes and sugary things
 - B. Drinking plenty of milk
 - C. Brushing teeth regularly
 - D. Regular dental check ups
26. Std 4 pupils took a large piece of wood and a small piece of wood and put them in water as shown below.

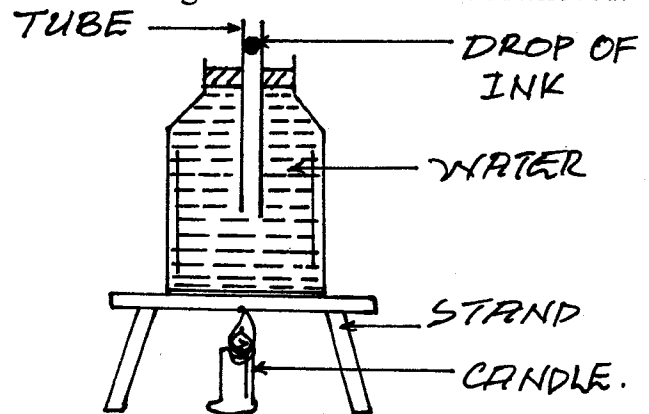


- The experiment demonstrates
- A. material affects sinking and floating
 - B. shape affects sinking and floating
 - C. weight affects sinking and floating
 - D. size does not affect sinking and floating

27. Which one of the following helps a bicycle to stop when brakes are applied?
- A. Friction between brakes and road
 - B. Friction between brakes and tyres
 - C. Heat between brakes and tyres
 - D. The treads of the tyres

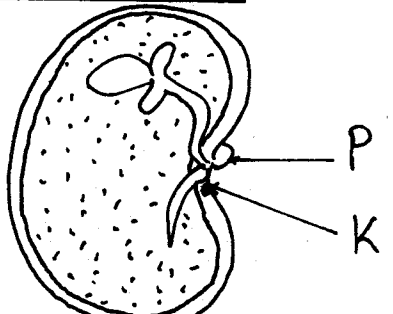
28. Which one of the following statement is **correct**?
- A. A whisper is a loud sound
 - B. Reflected sound is louder than original sound
 - C. Sound travels faster in a vacuum than air
 - D. Hard soft surfaces produce best echoes
29. Which of these sexually transmitted infections is **not** caused by bacteria?
- A. Genital herpes
 - B. Syphilis
 - C. Chancroid
 - D. Gonorrhoea
30. Which one is **not** a fungal infection?
- A. Athlete feet
 - B. Ringworm
 - C. Yeast
 - D. Dandruff
31. Plants that grow in moist soil have the following adaptations. Which one is **not**?
- A. Have flexible stems
 - B. Have thick cuticle
 - C. Have air sac
 - D. Have broad leaves
32. Food poisoning is **mainly** caused by
- A. poor cooking of food
 - B. poor food storage
 - C. micro-organisms
 - D. too much use of spices
33. Which one of the following statements about small animals is **not true**?
- A. Ostriches cannot fly
 - B. Scorpions bite to fight enemies
 - C. Chameleons catch insects using their tongue
 - D. Dogs pant to cool their bodies

34. The setup shown below shows what appeared after heating. The candle was then removed.



What happened after sometimes?

- A. The drop of ink evaporated
 - B. The drop of ink dropped
 - C. The drop of ink expanded
 - D. The drop of ink rose
35. When separating a solid and solid mixture it is **not** important to consider the
- A. density of particles
 - B. size of particles
 - C. solubility of particles
 - D. amount of mixtures
36. Which one of the following is **not** an effect of storage pests?

- A. Reduces quality of produce
 B. Leads to low yields
 C. Contaminates products
 D. Affect price of produce
37. Which one of the following activities should be done by a doctor first after listening to a patient's complaints?
 A. Prescribe a drug
 B. Give a dose
 C. Perform diagnosis
 D. Inform another doctor about it
38. Which one of the following statements about venus is **not true**?
 A. It rotates from East to West
 B. It is the hottest planet
 C. It is an inner planet
 D. It twinkles
39. Which of the following is a characteristics of soil with low capillarity?
 A. Holds its shape when moulded
 B. Cracks when dry
 C. Can be rolled to form ribbons
 D. Has large particles
40. The following are ways of controlling soil erosion. Which one is **least important**?
 A. Crop rotation
 B. Mulching
 C. Use of manure
 D. Planting cover crops
41. Manures help to improve fertility of soil in the following ways **except**
 A. improve air circulation
 B. bind soil particles
 C. improve water retention capacity
 D. can scorch plants parts
42. The following are reasons for proper lighting of our classes **except**
 A. to feel warm
 B. to be safe
 C. to read comfortably
 D. to discourage pests
43. The following are function of stems **except**
 A. transport food
 B. support plant parts
 C. protect the plant
 D. absorb water and mineral salts
44. Below are effects of air pollution. Which one is **not**?
 A. Leads to the death of aquatic animals
 B. Cause acid rain
 C. Cause headache and deafness
 D. Reduce rate of transpiration in plants
45. Which one of the following instruments uses the principle of reflection of light?
 A. Periscope
 B. Telescope
 C. Microscope
 D. Binoculars
46. The energy transformation that can take place when a dry cell is connected to a bulb is
 A. electrical → chemical → heat → light
 B. electrical → chemical → light → heat
 C. chemical → electrical → heat → light
 D. chemical → heat → electrical → light
47. Three of the following are functions of umbilical cord. Which one is **not**?
 A. Carries oxygen to the embryo
 B. Helps foetus to move freely
 C. Transport food nutrients to the embryo
 D. Carries waste materials from the embryo
48. The red colouring matter in blood is called
 A. scarlet
 B. haemoglobin
 C. stomata
 D. chlorophyll
49. Which of the following parasites can be controlled by use of acaricides?
 A. Fleas, lice, tapeworm
 B. Lice, tapeworms, roundworms
 C. Hookworms, ticks, tapeworms
 D. Ticks, lice, fleas
- Below is a bean seed.**
- 
50. Which of the following **cannot** use part P during reproduction?
 A. Water
 B. Oxygen
 C. Radicle
 D. Plumule