



HIGH PERFORMANCE EXAM SERIES

STANDARD SEVEN

YEAR 2020

[7] SCIENCE

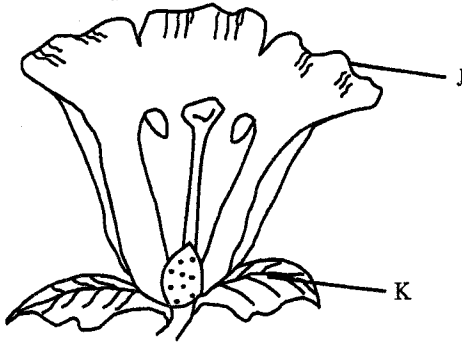
READ THESE INSTRUCTIONS CAREFULLY

Time : 1 Hr. 40 Min.

1. Use an ordinary pencil only.
2. Make sure that you have written on the answer sheet:-
 (I) **YOUR NAME** (II) **NAME OF YOUR SCHOOL**
3. When you have chosen your answer, mark it on the ANSWER SHEET, not in this question booklet.

1. Which statement below is **true** about rotational grazing?
- A. Increases soil erosion
 - B. Pasture has no time to grow
 - C. Animals use pastures correctly
 - D. Can be practiced in densely populated areas

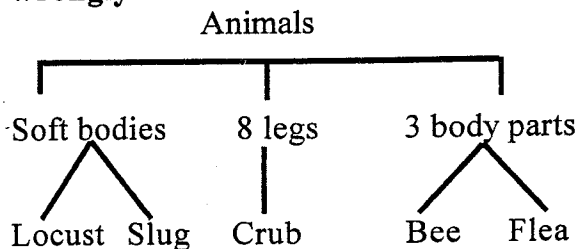
2. In the diagram below name the parts marked J and K respectively.



- A. corolla and sepals
- B. carpel and stamen
- C. petals and carpel
- D. sepals and stigma

3. Which two components of air form 70% of air by volume?
- A. Oxygen and carbon dioxide
 - B. Nitrogen and inert gases
 - C. Inert gases and oxygen
 - D. Carbon dioxide and nitrogen

4. In classification below which animals are **wrongly** classified?



- A. locust and flea
- B. slug and crub
- C. bee and slug
- D. locust and crub

5. Which statement below is **not true** about water?

- A. It has a definite shape
- B. It has a definite mass
- C. It has a definite volume
- D. It freezes to for

6. Which statement is **not true** about force?

- A. Changes the shape of a body
- B. Creates energy
- C. Makes a body to move
- D. Stops motion

7. A sinker displaced water equal to its own

- A. mass
- B. density
- C. volume
- D. weight

8. Which property of sandy soil **does not** depend on size of particles?

- A. Capillarity
- B. Colour
- C. Texture
- D. Drainage

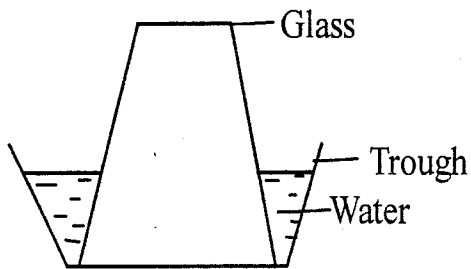
9. The type of soil erosion that may occur unnoticed is _____.

- A. sheet
- B. rill
- C. splash
- D. gully

10. Which one of the following should **not** be the same when investigating capillarity in different soils?

- A. Water
- B. Soils
- C. Cotton wool
- D. Tubes

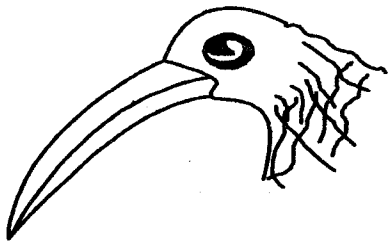
11. Standard five pupils carried out the activity shown below



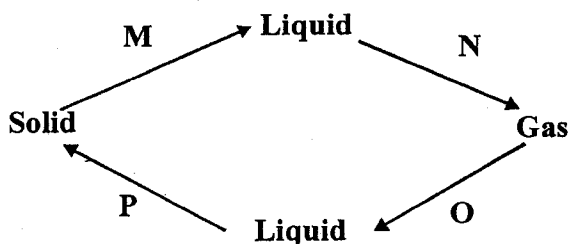
What conclusion did they make from the activity?

- A. Air has weight
 B. Air occupies space
 C. Air exerts pressure
 D. Air has mass
12. Which of the following is **not** a deficiency diseases?
 A. Marasmus B. Scurvy
 C. Bilharzia D. Anaemia

13. The bird shown in the diagram below feed on



- A. fish B. nectar
 C. grains D. flesh
14. Which crop below is the odd one out?
 A. Flax B. Cotton
 C. Sisal D. Sunflower
15. Which one of the following is **not** a supplement given to animals?
 A. Salt lick B. Lucerne
 C. Chick mash D. Bone meal
16. In the diagram below identify the processes that need a decrease in temperature?

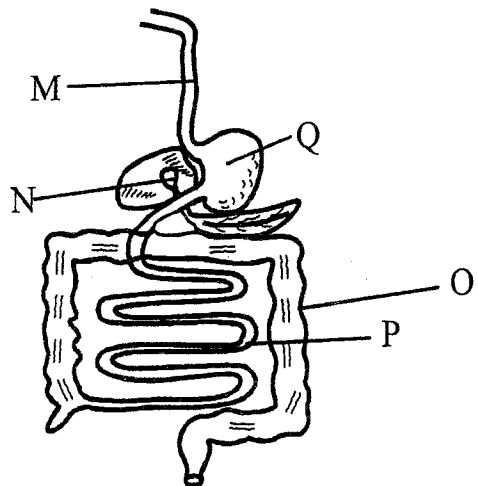


- A. O and P B. M and N
 C. N and O D. M and P

17. Which one of the following is **not** recreational use of water?
 A. Boat racing B. Skiing
 C. Watering crops D. Swimming

18. Wearing of gumboots when walking in a swampy farm will prevent _____.
 A. cholera
 B. Typhoid
 C. bilharzia
 D. Cholera and Typhoid

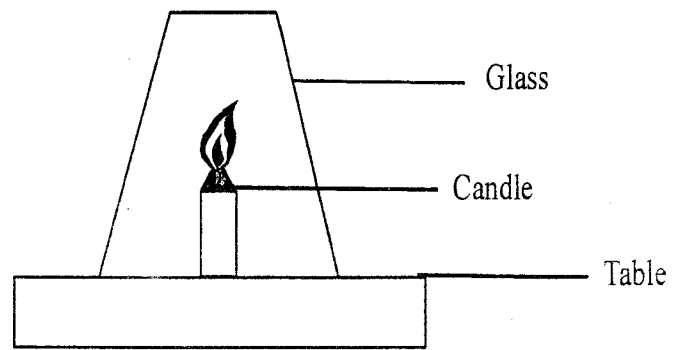
Use the diagram below to answer question 19 - 21.



19. Identify the part marked **O** and **P** _____
 A. colon and ileum
 B. colon and rectum
 C. ileum and duodenum
 D. ileum and liver
20. The part marked _____ absorbs water.
 A. Q B. O
 C. P D. N
21. Bile is produced by the part marked
 A. M B. N
 C. O D. Q
22. Which one is **not** a function of plant leaves?
 A. Making plant food
 B. Transpiration
 C. Breathing
 D. Transporting food
23. Which one is **not** a group of medicinal drugs?
 A. Stimulants B. Antibiotics
 C. Pain killers D. Vaccines

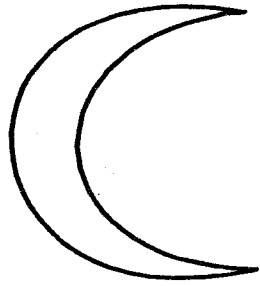
24. Which plant below has the same type of roots as a been plant?
 A. Onion B. Coconut
 C. Acacia tree D. Maize
25. Which type of soil is obtained from an ant hill?
 A. Clay
 B. Loam
 C. Sand
 D. Loam and sand
26. Which weather instrument measure two aspects of weather?
 A. Rain gauge
 B. Wind vane
 C. Air thermometer
 D. Windsock
27. Which of the following animal have the same breathing organs?
 A. Chameleon and shark
 B. Fish and tadpole
 C. Whale and shark
 D. Tilapia and turtle
28. Heat from the sun reaches us by a process called
 A. convection
 B. reflection
 C. conduction
 D. radiation
29. Which one of the following farm animals give us mutton and milk?
 A. Sheep B. Goats
 C. Poultry D. Cattle
30. The human male reproductive cells are stored in the _____.
 A. testes B. sperm ducts
 C. scrotum D. epididymis
31. Which one of the following **does not** explain cumulus clouds?
 A. Bring drizzle
 B. Are thick and feathery
 C. Have flat bottoms
 D. Indicates fine weather

32. Standard 6 pupils carried out the activity shown below.

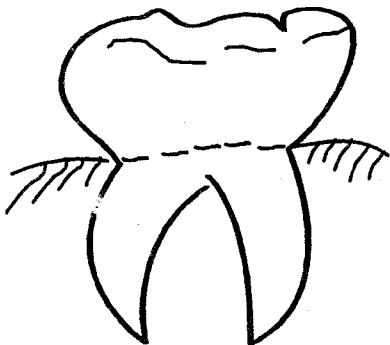


- Which conclusion was made from the activity?
 A. Carbon dioxide is produced during burning
 B. Oxygen supports burning
 C. Oxygen is produced during burning
 D. Carbon does not support burning
33. Which of the following methods of grazing uses temporary fences?
 A. Stall feeding B. Paddocking
 C. Herding D. Strip grazing
34. Milk is pasteurized mainly to _____
 A. kill bacteria
 B. improve the taste
 C. make packaging easier
 D. remove dirt
35. Vaccines given to a baby at birth prevent
 A. measles and polio
 B. whooping cough and tetanus
 C. polio and tuberculosis
 D. tuberculosis and measles
36. Which one of the following will **not** be observed in a person suffering from malaria?
 A. Pain in joints B. Chest pains
 C. Vomiting D. Fever
37. The planet that takes the longest time to go round the sun is
 A. Uranus B. Mercury
 C. Neptune D. Jupiter

38. Name the phase of the moon shown in the diagram below



- A. crescent moon B. new moon
C. gibbous moon D. quarter moon
39. Which one has plants that feed on decaying matter?
- A. Algae and mushroom
B. Yeast and mould
C. Pine and fern
D. Moss and algae
40. Name the type of tooth shown in the diagram below



- A. canine B. premolar
C. incisor D. molar
41. During adolescence both boys and girls
- A. experience wet dreams
B. grow beards
C. experience menstrual flow
D. grow pubic hair
42. Which one of the following disease affects the throat and causes difficulty in breathing in young children?
- A. Diphtheria
B. Measles
C. Whooping cough
D. Polio

43. The following are effects of HIV and AIDS to the family. Which one is **not**?
- A. Embarrassment
B. Loss of income
C. Poor economy
D. Lack of parental care

44. Which plant below **does not** experience self pollination?

- A. Pawpaw B. Maize
C. Mango D. Banana

45. Which one of the following shows fodder crops rich in proteins?

- A. Napier grass and desmodium
B. Sweet potato vines and maize stalks
C. Lucerne and desmodium
D. Maize stalks and lucerne

46. The type of soil erosion that leaves v shape channels develops from _____.

- A. gully B. sheet
C. rill D. splash

47. Which one of the following substances has definite shape and volume?

- A. Vapour and smoke
B. Candle wax and ice
C. Water and vapour
D. Spirit and chalk dust

48. A metal ship floats on water **mainly** because of

- A. weight B. material
C. size D. shape

49. Which of the following is **not** needed in an experiment used to investigate expansion in liquids?

- A. Water B. Straw
C. Balloon D. Source of heat

50. How many stones of 250g are needed to balance a 1kg of meat?

- A. 4 B. 5
C. 10 D. 2