

ACHIEVERS FOCUS EXAMINATION SERIES



STANDARD 8 – 2021

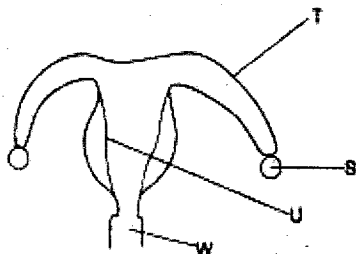
SCIENCE

AF005

Time: 1 hour 40 minutes

- Which type of teeth is one **NOT** likely to be used when eating sugarcane?
 - Incisors
 - Molars
 - Premolars
 - Canines
- When rays of light pass from air to water they
 - Bounce back
 - Increase in size
 - Are bent
 - Are absorbed
- The following are signs and symptoms of a certain disease.
 - Fever
 - Sever haedache
 - Blood in stool and urine
 - Sever dehydration
 - Vomiting
 Which two are for typhoid?
 - (i) and (ii)
 - (iii) and (iv)
 - (ii) and (iii)
 - (iv) and (v)
- Which one of the following foods is rich in both proteins and fats?
 - Avocado
 - Milk
 - Sunflower
 - Beans
- Which one of the following is **NOT TRUE** about pressure exerted by liquids? Pressure in liquids increases when the
 - Diameter of container is reduced
 - Container with liquid is raised
 - Amount of liquid is increased
 - Depth of liquid is increased

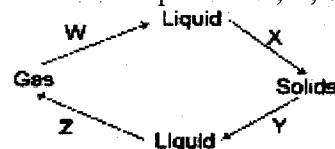
- The diagram below represents a female reproductive system.



The process taking place in the parts labeled S, T, U and W respectively are

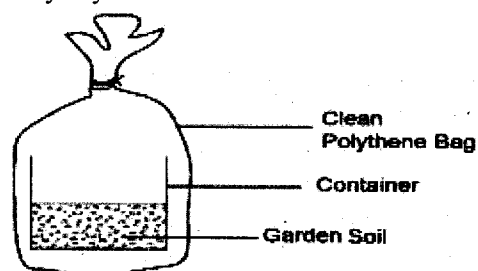
- Ovary, oviduct, uterus, vagina
- Fertilization, ovulation, parturition, implantation
- Ovulation, fertilization, implantation, parturition
- Parturition, implantation, ovulation fertilization

- Which one of the following is a source of mechanical energy?
 - Dam
 - Solar panel
 - Wind turbine
 - Biogas plant
- The diagram below shows process W, X, Y and Z.



Which process requires losing heat from the environment?

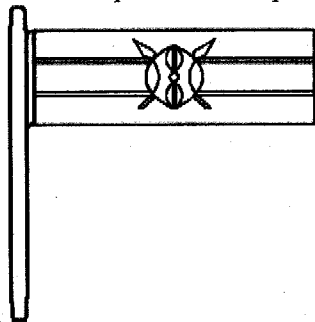
- X and Y
 - W and X
 - Z and X
 - Y and Z
- Below is a food chain in a given grassland.
Sweet potatoes → locust → newt → snakes → secretory birds
 What would likely happen immediately after all the snakes were killed?
 - Locust would decrease in number
 - Secretory birds would die
 - Newt would decrease in number
 - The number of sweet potatoes would increase
 - The diagram below shows a set-up that was used by a standard 4 pupil to investigate a certain component of soil. The set up was kept out for some time on a hot sunny day.



What component of soil were the pupils investigating?

- Living organism
 - Moisture
 - Air
 - Humus
- The best method of handling medicine bottles after use is
 - Re-using them
 - Burning them
 - Recycling
 - Burying them in deep soil
 - Which one of the following animals does **NOT** have strong hind legs?
 - Grasshopper
 - Lizards
 - Toads
 - Frogs

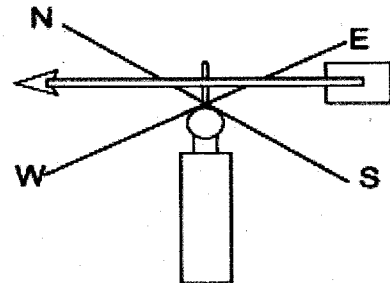
13. Which one of the following is the initial type of energy in a radio that uses dry cell to operate?
- Electrical
 - Magnetic
 - Heat
 - Chemicals
14. A burning sensation when urinating and pain in the lower abdomen can be a sign of
- Gonorrhoea
 - HIV and AIDS
 - Chancroid
 - Syphilis
15. The diagram below represents a simple machine.



Which of the following statements about the simple machine is true? The machine

- Changes the direction of force
 - Reduces the work done
 - Increase the effort distance
 - Functions the same as ladder
16. The following are examples of renewable energy except
- Diesel
 - Sun
 - Wind
 - Biogas
17. Mothers should breast feed their babies always **MAINLY** because breast milk
- Helps in bonding
 - Is readily available
 - Boosts immunity of the body
 - Is used for weaning
18. The following are characteristics of clouds.
- Look like bundles of cotton wool
 - Show fine weather
 - Have a flat base
- The described clouds are
- Cumulus
 - Nimbus
 - Stratus
 - Cirrus

19. Which one of the following shows the **CORRECT** urine passage from the kidney during excretion?
- Ureter - bladder - urethra
 - Urethra - bladder - ureter
 - Bladder - ureter - urethra
 - Bladder - urethra - ureter
20. During birth, the following procedure takes place.
- The baby comes out through the vagina
 - Uterine wall contracts causing labor pain
 - Amnion sac is broken and amniotic fluid is released
 - Umbilical cord is tied and then cut
- Which of the following is the **CORRECT** order?
- (ii), (iii) (i) (iv)
 - (ii) (iii) (iv) (i)
 - (iii) (ii) (i) (iv)
 - (iii) (ii) (iv) (i)
21. The illustration below is a wind vane made from locally available materials.



Which one of the following statements about the instrument is **INCORRECT**?

- It measures the direction of the wind
 - Its arrowhead points to the direction where the wind is going
 - The arrowhead should be smaller than the tail
 - It should be placed far away from buildings and trees
22. The most effective way of controlling HIV/AIDS among married couples is by
- Abstinence
 - Using condoms
 - Having one partner
 - Being faithful
23. Plants that grow on nitrogen deficiency soil are called
- Insectivorous
 - Leguminous
 - Parasitic
 - Saprophytes
24. Which one of the following lists consist of major components of the environment?
- Air, sound, light
 - Soil, water, animals
 - Fern, wind, furniture
 - Mushroom, light, water

25. Class 6 pupils collected seeds, cooking oil, boiled water and a container. Which condition necessary for germination were they likely to investigate?
- Oxygen
 - Warmth
 - Moisture
 - Soil
26. Which one of the following is a way of conserving energy by using an efficient device?
- Using a jiko with a clay lining
 - Switching off bulbs when not in use
 - Using charcoal to cook food
 - Using non-renewable sources
27. The following are parts of the alimentary canal
- Mouth
 - Small intestine
 - Stomach
 - Gullet
 - Large intestine
- In which two parts does absorption take place?
- (ii) and (v)
 - (iv) and (iii)
 - (ii) and (iv)
 - (i) and (v)
28. Which one of the following parts of the insectivorous plants is adapted for trapping insects?
- Flowers
 - Leaf
 - Stem
 - Fruit
29. Which one of the following is a source of oil?
- Avocado
 - Green grams
 - Milk
 - Groundnuts
30. The following are ways through which plants show interdependence **EXCEPT**
- Sharing food
 - Support
 - Provision of shelter
 - Provision of medicine
31. A hawk and a duck billed platypus
- Have their bodies covered with hair
 - Reproduce by laying eggs
 - Have mammary glands
 - Have a varying body temperature

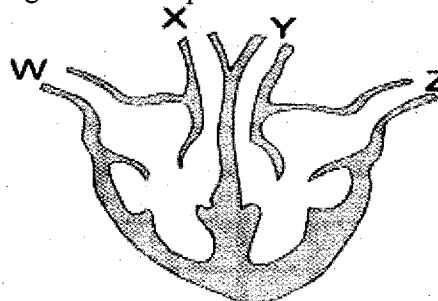
32. Which of the following **CANNOT** be measured in newtons?
- Weight
 - Friction
 - Gravity
 - Pressure

33. Which one of the following is not a disadvantage of chemical fertilizers? They
- Encourage growth of weeds
 - Pollute soil when used excessively
 - Are expensive
 - Are corrosive to plants

34. When modeling the solar system, the orbit can be made using
- Pins
 - Soft wire
 - Barbed wire
 - Paper machine

35. Which of the following components of the environment is found in all other components?
- Air
 - Soli
 - Water
 - Animals

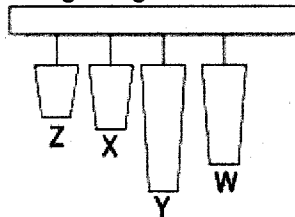
36. The diagram below represents a mammalian heart.



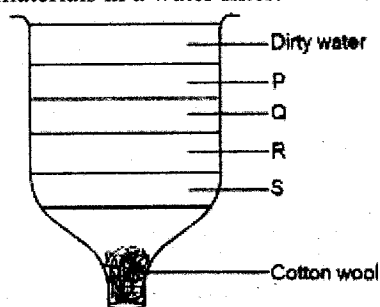
In which pair of blood vessel is blood under highest pressure?

- W and X
 - X and Y
 - Y and Z
 - W and Z
37. The rate at which water drains in the soil is mainly determined by the
- Volume of the soil
 - Size of the soil particles
 - Humus content in the soil
 - Air content in the soil
38. Bilharzia and malaria diseases can both be prevented by
- Wearing protective clothing
 - Clearing bushes
 - Pouring oil on stagnant water
 - Draining stagnant water

39. An adult human being has how many molars on each side of the jaw?
 A. 6 B. 3 C. 4 D. 2
40. The following are signs and symptoms of a water-borne disease.
 (i) Constipation (ii) Severe headache (iii) Skin rash
 (iv) Body temperature rises beyond normal
 The disease described above is likely to be
 A. Bilharzia C. Cholera
 B. Malaria D. Typhoid
41. Four bars of different length but of the same thickness were suspended using strings as shown below.

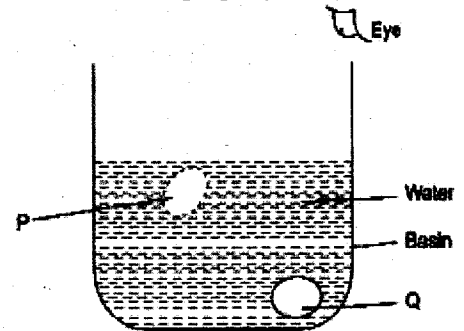


- When struck with a metal rod, which bar will produce the loudest sound?
 A. W B. Y C. X D. Z
42. Which of the following foods provide a diet of proteins and carbohydrates?
 A. Clovers and lucerne
 B. Sunflower seeds and barley grains
 C. Sunflower and maize grains
 D. Lucerne and maize grains
43. Standard 5 pupils planted seeds in a container. After germination, they added water that covered the seedlings. They then placed the container outside the classroom. They noted that the seedlings died after a few days. The main reason why the seedlings died was due to
 A. Too much light C. Lack of air
 B. Lack of warmth D. Lack of mineral salts
44. Which one of the following statements would be true about a young insect pollinated flower whose style has been cut off?
 A. Pollen grains will not develop
 B. Pollination will occur
 C. Ovules will not develop into seeds
 D. Anthers will not produce pollen grains
45. In the diagram below P, Q, R and S represent different layers of materials in a water filter.



- Which material are represented by P, Q, R and S respectively?
 A. Charcoal, fine sand, coarse sand, pebbles
 B. Fine sand, charcoal, pebbles, coarse sand
 C. Pebbles, coarse sand, fine sand, charcoal
 D. Coarse sand, charcoal, pebbles, fine sand

46. The diagram below represents a set up used to demonstrate a certain property of light.



- Which one of the following statements is correct about the set up? Light is
 A. Reflected from P to the eye
 B. Refracted from Q to the eye
 C. Reflected from Q to the eye
 D. Refracted from P to the eye

47. Which one of the following soil conservation measures is the least suitable on a large piece of land?
 A. Terracing
 B. Mulching
 C. Tree planting
 D. Contour farming
48. Which of the following pairs of machines consists only of inclined planes?
 A. Ladder and staircase
 B. Staircase and wheelbarrow
 C. Claw hammer and ladder
 D. Spade and crow bar
49. A plane mirror is placed at the beginning of the word MALARIA. Which one of the following groups of letters will remain the same when the word is reflected?
 A. M, A, L B. M, A, I
 C. R, A, I D. L, I, A
50. Which of the following pairs of food is preserved by smoking, salting and drying?
 A. Meat and mushroom
 B. Beans and fish
 C. Mushroom and beans
 D. Meat and fish