

# THE CURVE EVALUATION TEST

K.C.P.E TRIAL -2020

SILVER 002

**-SCIENCE-**

**Time: 1 hour 40 minutes**

**READ THESE INSTRUCTIONS CAREFULLY**

1. You have been given this question booklet and a separate answer sheet. The question booklet contains 50 questions.
2. Do any necessary rough work in this booklet.
3. When you have chosen your answer mark it on the **ANSWER SHEET**, not in the question paper.

### HOW TO USE THE ANSWER SHEET.

4. Use an ordinary pencil only.
5. Make sure that you have written on the answer sheet

**YOUR INDEX NUMBER**

**YOUR NAME**

**NAME OF YOUR SCHOOL**

6. By drawing a **dark line** inside the correct numbered boxes mark your full Index Number (i.e. School Code Number and the Candidate's Number) in the grid near the top of the answer sheet.
7. Do not make any marks outside the boxes.
8. Keep your answer sheet as clean as possible and **DO NOT FOLD IT**.
9. For each of the questions 1-50 four answers are given. The answers are lettered A, B, C, D. In each case only **ONE** of the four answers is correct. Choose the correct answer.
10. On the answer sheet show the correct answer by drawing a **dark line** inside the box in which the letter you have chosen is written.

### Example

**In the Question Booklet:**

14. Which one of the following is **not** a controlled method of grazing?  
A. Zero grazing.  
B. Strip grazing.  
C. Herding.  
D. Tethering.

The correct answer is C.

**On the Answer sheet:**

14. [A] [B] [C] [D]

15. [A] [B] [C] [D]

16. [A] [B] [C] [D]

17. [A] [B] [C] [D]

In the set of boxes number 14, the box with letter C printed in it is marked.

11. Your dark line **MUST BE** within the box.
12. For each question **ONLY ONE** box is to be marked in each set of four boxes.

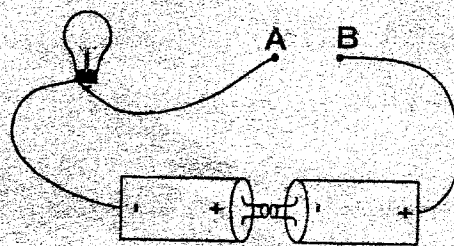
This question paper consists of 8 printed pages.

© Compiled @ Printed by Tangent Ventures

**TURN OVER**

- The following are the **main** functions of amniotic fluid **except**
  - Acts as a shock absorber.
  - Helps to protect the foetus from getting hurt.
  - Allows the foetus to turn freely in the uterus.
  - Connects the embryo to the walls of the uterus.
- Which are the two **main** components of urine?
  - Water and salts
  - Water and carbondioxide
  - Urea and water
  - Urea and salts.
- Syphilis disease can be prevented by all the following ways **except**
  - sexual abstinence
  - ensuring that all the infected people seek medical treatment promptly.
  - using protection when one is having sex
  - being vaccinated against syphilis.
- Transmission of heat in solids takes through a process known as
  - Conduction
  - Convection
  - Radiation and Conduction.
  - Convection and Radiation.

- The set up below was done to investigate good and poor conductors of electricity.

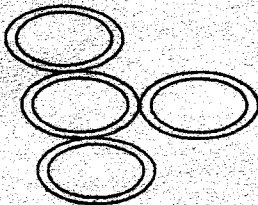


Which material can be used to join the wires at **AB** to make the bulb light?

- Thread
  - Plasticine
  - Graphite
  - Rubber.
- The size of the shadow formed by an object depends on the, \_\_\_\_\_
    - mass of the material
    - type of material
    - amount of light
    - position of the clouds.
  - The use of manures and fertilisers has the following advantages **except**
    - Results in high growth rate of crops.
    - leads to quick ripening of fruits.
    - Improves soil fertility.
    - Scorches the plants.
  - Which of the following liquids will form a homogenous solution when mixed?
    - Kerosene and water.
    - Water and motor oil.
    - Cooking oil and water.
    - Water and milk.

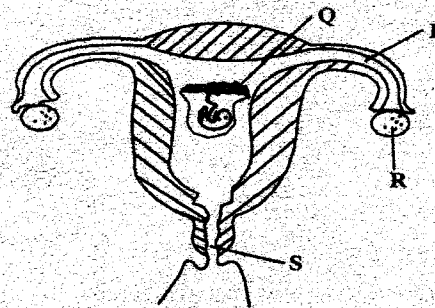
9. In the food chain below, what would happen if all chicken are eaten by man?  
**Grass → Grasshopper → Chicken → Hawk.**
- Grass would increase.
  - Hawks would starve.
  - Grasshopper would decrease.
  - Hawks would increase.

10. What is the function of the blood components shown below



- carry oxygen from the lungs to the body organs.
  - engulfs disease causing germs.
  - clots blood when one is injured.
  - dissolves food nutrients.
11. Which one of the following is **not** a function of the nose?
- It warms, moistens and filters air.
  - It is the organ of smell.
  - Air is absorbed into the body through it.
  - It helps in production of sound.

The diagram below shows female reproductive system. use it to answer questions 12 and 13



12. Which of the following processes occurs at the part marked P and R respectively?
- Implantation, Parturation
  - Ovulation, Fertilisation
  - Implantation, Ovulation
  - Fertilisation, Ovulation
13. The following are functions of the part marked Q. Which one is **not**?
- Facilitates exchange of respiratory gases between the mother and the foetus.
  - Supply food from the mother's blood to the foetus.
  - Facilitates exchange of blood components from the mother to the foetus.
  - Facilitates transfer of waste products from the foetus to the mothers blood.
14. Which part of the heart will be the first to be affected if a person is bitten by a snake?
- Left auricle
  - Right ventricle
  - Right auricle
  - Left ventricle.

15. The following are excretory wastes removed by the kidney **except**?

- A. Carbon dioxide.
- B. Excess salts.
- C. Urea.
- D. Salts.

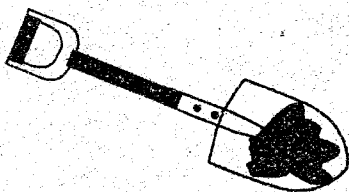
16. Which one of the following is **not** an importance of brushing the teeth?

- A. To remove food particles from the teeth.
- B. To give one fresh breath
- C. To maintain unhealthy teeth
- D. To prevent gum diseases.

17. The purpose of the charcoal in a home made water filter is to?

- A. Absorb moisture.
- B. Remove solid particles.
- C. Kill germs.
- D. Remove toxins.

18. The diagram below shows an example of a lever.



Which other levers below, belong to the same class as the one shown above?

- A. Fishing rod, Tongs
- B. Bottle opener, wheelbarrow
- C. Scissors, See saw
- D. Crowbar, Nutcracker

19. Which group contains non-magnetic materials only?

- |                             |                                 |
|-----------------------------|---------------------------------|
| A. Copper<br>Glass<br>Steel | B. Chromium<br>Alnico<br>Cobalt |
|-----------------------------|---------------------------------|

- |                             |                            |
|-----------------------------|----------------------------|
| C. Brass<br>Paper<br>Copper | D. Wood<br>Cobalt<br>Steel |
|-----------------------------|----------------------------|

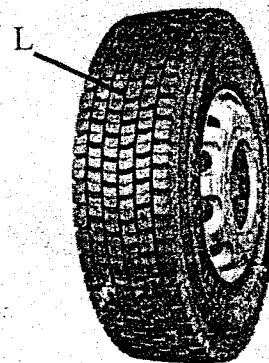
20. Cacti and baobab tree are also commonly known as succulents. This means they;

- A. transpire very little water
- B. have numerous stomata
- C. are able to store water in their tissues
- D. reflect sunlight and heat reaching the leaves.

21. Which diseases given below are a baby immunised against at birth and 9 months after birth?

- A. Polio and measles
- B. Yellow fever and diptheria
- C. Tuberculosis and whooping cough.
- D. Measles and Tetanus.

22. The parts of the wheel marked L help in



- A. increasing friction
- B. reducing friction
- C. making the wheel durable
- D. making the wheel beautiful





28. Name the parts marked Y and X respectively.
- Dermis, Epidermis
  - Dermis, Dead skin
  - Epidermis, Sweat duct
  - Sweat gland, Dermis
29. Which part of the processes below require an increase in temperature?
- Condensation and freezing
  - Freezing and melting
  - Melting and evaporation
  - Evaporation and condensation
30. During the preparation of a compost heap, soil is added
- to make the decomposition process faster
  - to introduce bacteria to the compost
  - to provide nutrients to the bacteria that brings decomposition
  - to help in adding nutrients such as phosphorous
31. Which one of the following food preservation methods is **least** useful in urban areas?
- Refrigeration
  - Sun drying
  - Freezing
  - Canning

32. The following are methods of grazing animals. In which method are the animals fed in stalls?
- Zero grazing.
  - Paddockling.
  - Tethering.
  - Strip grazing.
33. The diagram below shows the male parts of a flower



Name the parts labelled K and P respectively

- filament, anther
  - anther, filament
  - pollen grains, stigma
  - style, stigma
34. Carbon dioxide can be used in several ways as listed below **except**
- during germination
  - in fire extinguishers
  - in preserving soft drinks
  - during photosynthesis
35. Which one of the following is an adaption of plants in dry areas?
- They have broad leaves.
  - They have fleshy stems and leaves.
  - They are evergreen.
  - They are shallow rooted.

36. The following are effects of crops diseases **except**?

- A. Poor crop yields or no yield at all.
- B. Poor quality of the crops harvested.
- C. Lack of food for the family and the nation.
- D. Bumper harvesting.

37. The following are stages of HIV infection

(i) *symptomatic stage*

(ii) *window period*

(iii) *full blown Aids*

(iv) *Asymptomatic stage*

Which of the following shows the **correct** order of the stages?

- A. i, iv, ii, iii
- B. ii, iv, i, iii
- C. ii, i, iv, iii
- D. iii, i, ii, iv

38. Which one of the following is **not** a translucent material?

- A. Clear glass
- B. Tissue paper
- C. Oiled paper
- D. Frosted glass

39. Which one of the following is a method of controlling internal livestock parasites?

- A. Dipping.
- B. Deworming.
- C. Spraying.
- D. Hand dressing.

40. Which one of the following weather instrument is **incorrectly** matched with the principal behind its working?

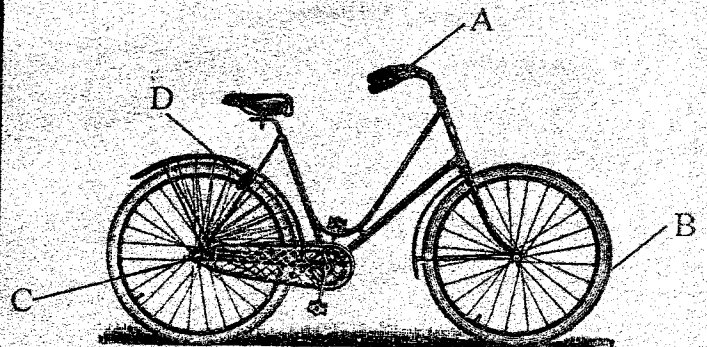
**Weather Instrument      Principal use**

- A. Windsock → *Air exerts pressure*
- B. Thermometer → *Expansion and contraction of liquids*
- C. Windvane → *Air in motion*
- D. Raingauge → *Liquid occupy space*

41. Which one of the following factors would reduce water pollution?

- A. Using pests to control water weeds.
- B. Dumping waste into rivers.
- C. Throwing chemicals containers in the dumpsite.
- D. Spilling oil into the sea.

42. Which part of the bicycle below produces electricity that provides light at night?



43. Which one of the following groups consists of only plants with fibrous roots?

- A. Cowpeas, maize, wheat
- B. Rice, Millet, Maize
- C. Carrots, Millet, Wheat
- D. Cowpeas, Rice, Carrots

44. The second, fourth and eighth planets respectively are,  
A. Earth, Saturn, Uranus.  
B. Venus, Mars, Neptune.  
C. Mars, Jupiter, Neptune  
D. Venus, Jupiter, Uranus.
45. Wearing protective clothes while walking in stagnant water can prevent one from contracting;  
A. Bilharzia  
B. Cholera  
C. Typhoid  
D. Malaria
46. Which one of the following pairs consists of field pests only?  
A. Rodents and weevils.  
B. Aphids and antworms.  
C. White ants and rats.  
D. Rats and weevils.
47. Roughages in the diet helps in;  
A. digestion of food.  
B. getting rid of undigested material  
C. formation of blood  
D. absorption of food in the alimentary canal.
48. Which one of the following is a social effect of abusing drug?  
A. Death and miscarriage  
B. Rape and truancy  
C. Fits and irritability  
D. Depression and violence.
49. Which component of soil improves its water holding capacity?  
A. Mineral particles.  
B. Air.  
C. Humus.  
D. Living organisms.
50. Which one of the following are sea mammals?  
A. Lizard, crocodiles.  
B. Bat, hippopotamus.  
C. Spiny ant eater, platypus.  
D. Dolphin, seals.